



Guidance for Users

Using DWP National Statistics

DWP Department for
Work and Pensions

Information Directorate

© Crown Copyright 2005

Summary

The best benefit statistics to use are sourced from the newly published Work and Pensions Longitudinal Study (WPLS)¹. These data are based on 100% of claimants and cover information such as age and gender of claimant, duration of their spell on benefit and geographical locations of claimants.

If you require more detailed breakdowns specific to one benefit (for example type of JSA in payment) you may need to rely on our 5% sample data which has more detail but less comprehensive coverage.

Please use the WPLS data first and only rely on the sample data if the information you need is not available on the WPLS. DWP recommends that, where the detail is only available on the 5% sample data, the proportions derived should be applied to the overall 100% total for the benefit.

The primary source of statistics is now an internet-based Tabulation Tool. This document describes how to use the information held within the WPLS Tabulation Tool in conjunction with the 5% sample Tabulation Tool.

¹ Some benefits and services are not yet covered by the WPLS e.g. Housing Benefit, Council Tax Benefit and Industrial Injuries Benefit

Should I use the 5% sample Tabulation Tool or the WPLS Tabulation Tool to obtain DWP statistics?

There are two key principles to guide this decision:

1 Users should obtain statistics exclusively from the WPLS Tabulation Tool whenever possible.

This is because the WPLS data, as from 27th October 2005, is the DWP's key data source for many benefit statistics. These data are used to produce headline National Statistics. WPLS data are based on 100% of claimants.

2 If it is necessary to use the 5% sample Tabulation Tool, it should NOT be used in isolation, but in conjunction with the WPLS Tabling Tool.

It is sometimes necessary to use 5% sample data because:

- Only limited information is available from the WPLS Tabulation Tool prior to August 1999 for Working Age benefits and pre-May 2002 for pensioner benefits.
- Certain variables appear only in the 5% sample data and not in the WPLS 100% data.
- Therefore for more detailed breakdowns specific to one benefit (for example type of JSA in payment) you may need to rely on our 5% sample data which has more detail but less comprehensive coverage.

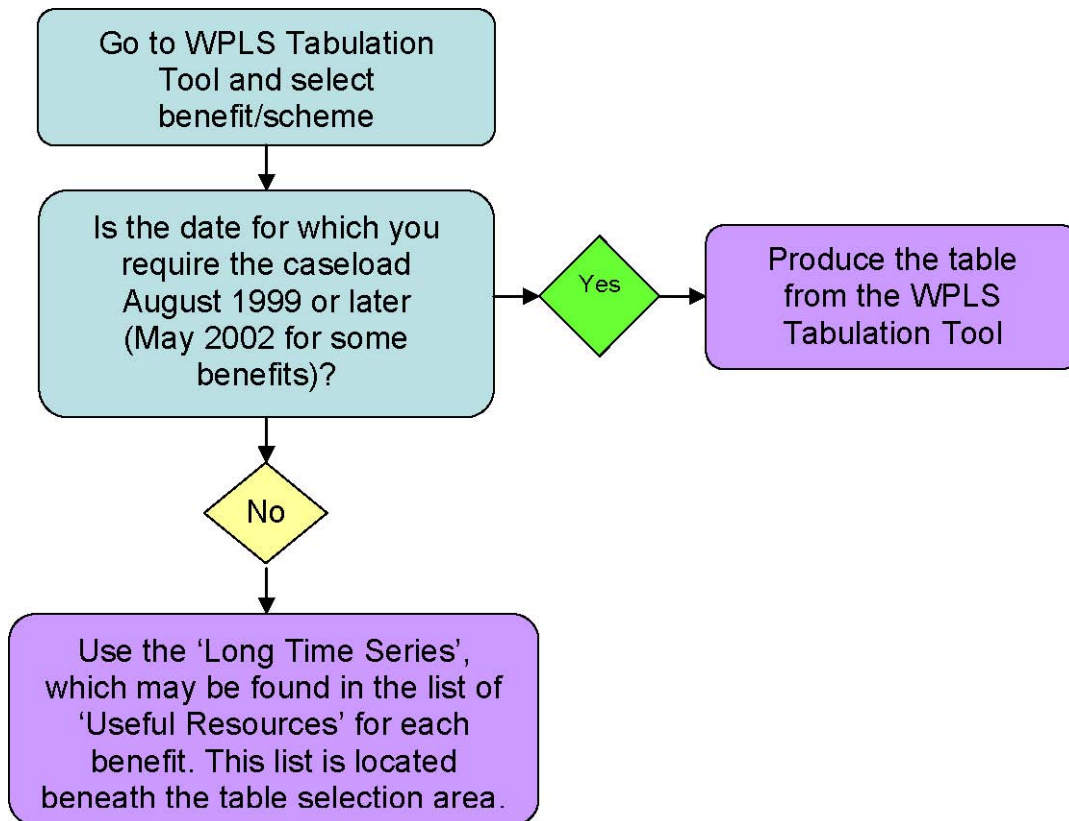
Which variables are available?

Two annexes to this document provide lists of variables and the dates for which they are available.

Annex A Variables on WPLS 100% Tabling Tool

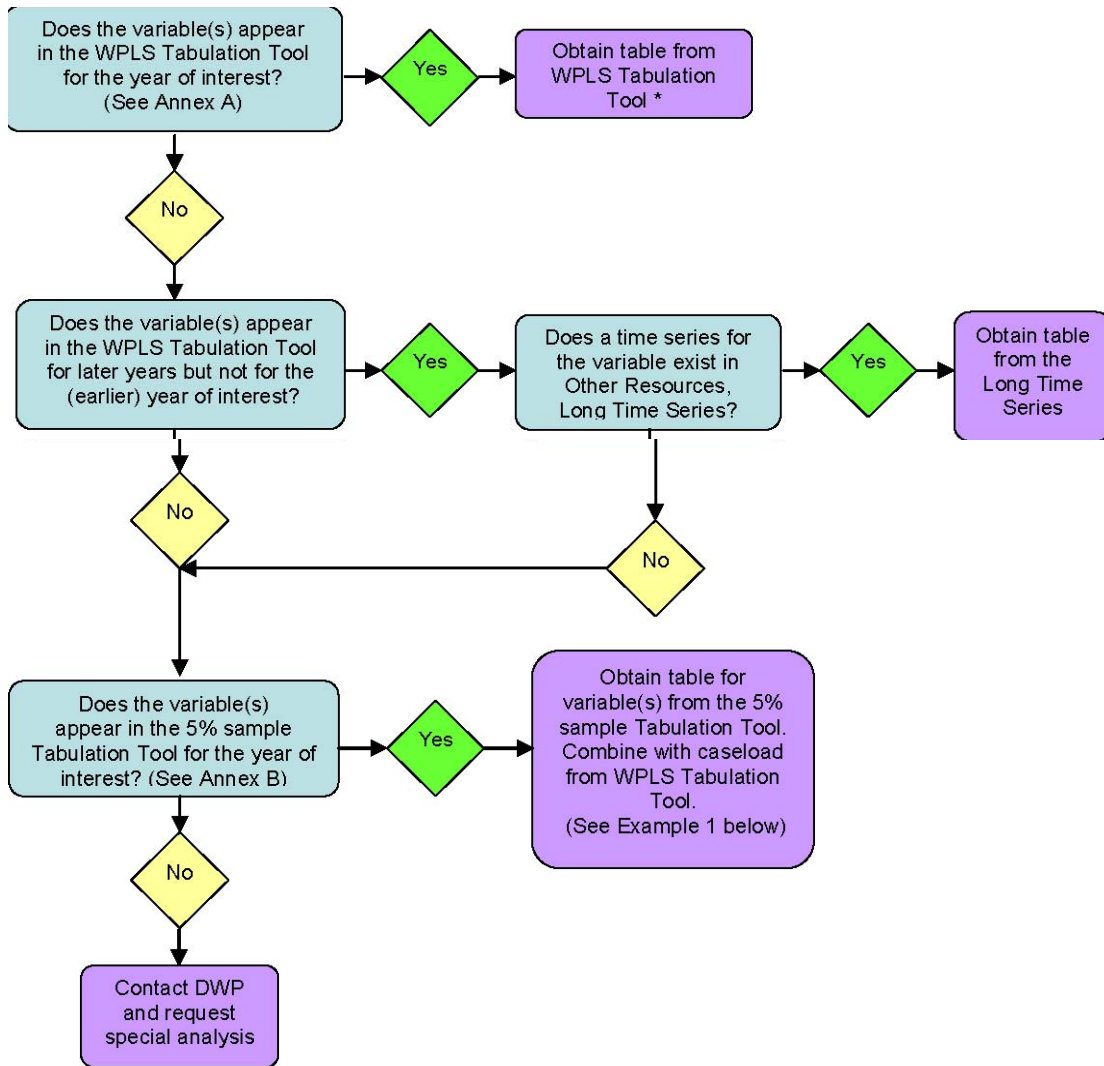
Annex B Variables on 5% sample Tabulation Tool

To obtain total caseload – flow chart



The 100% 'long time series' available on the tabulation tool has been calculated by applying a rating factor to the 5% sample caseload figure. The rating factor is calculated by dividing the 100% figure by the 5% figure for each of the first 4 quarters for which the 100% series is available, and then taking the average (mean) of these 4 values. The 5% sample data is then multiplied by this rating factor to create the 100% 'long time series'. A 4 quarter average is used for all benefits except attendance allowance (AA) and disability living allowance (DLA). For AA and DLA the rating factor is based on the first 2 quarters for which the 100% series was available. This difference is because of a change in the methodology used to produce the 5% sample figures for AA and DLA in November 2002.

To obtain statistics other than total caseload - flowchart



* If the variables appear in the WPLS Tabulation Tool but not in the combination desired please contact DWP to request a special analysis

Combining 5% and WPLS data

You will need to use 5% sample data in conjunction with WPLS data if a variable is available in the 5% sample data but not the WPLS data. **The basic principle in combining the two, is that the caseload should be obtained from the WPLS data. To this, percentages taken from the 5% sample data are applied.**

There are 4 steps for combining 5% sample and WPLS data:

- Step 1** Obtain the **caseload** at the relevant date from the **WPLS Tabulation Tool** or, for earlier years, the long time series spreadsheet (available from the WPLS Tabulation Tool under 'Useful Resources and Sites')
- Step 2** From the **5% sample Tabulation Tool**, produce a table for the relevant **date and variable**.
- Step 3** Calculate the proportional distribution of the variable for the 5% total cases.
- Step 4** Apply the proportions to the WPLS caseload.

Example 1: combining 5% and WPLS data

Bereavement Benefit, number of dependants, February 2003

It is necessary to combine 5% and WPLS statistics because the variable showing number of dependants appears in the 5% data but not the WPLS data.

- Step 1** Obtain caseload from the WPLS Tabulation Tool.

For Bereavement Benefit this is:

	Total
	Caseload (Thousands)
FEB03	46.3

Step 2 Obtain information about the number of dependants from 5% sample Tabulation Tool for March 2003*.

	Total
	Caseload (Thousands)
Total	44.4
Number of dependants	
No dependants	24.1
1 dependant	10.7
2 dependants	7.1
3 dependants	2.0
4 dependants	* 0.3
5 dependants or more	* 0.1
Unknown	-

***Note: State Pension, Widow's Benefit and Bereavement Benefit.**

The data extraction dates for 5% data (March and September) and WPLS data (February, May, August and November) are different. The convention which users should adopt for these benefits is: when combining 5% and WPLS 100% data, utilise only **WPLS data for February and August**. Apply the proportions obtained from the **5% sample data for the following month, that is March and September**.

Step 3 Convert the distribution of the variable from the 5% sample data to proportions:

E.g. proportion with 1 dependant =
 $10.7 \text{ (number with one dependant)} \div 44.4 \text{ (total caseload from 5\% sample)}$
 $= 0.241$

	Number of cases (thousands)	Expressed as a proportion of total cases
Total (from 5% sample Tabulation Tool)	44.4	1
No dependants	24.1	0.543
1 dependant	10.7	0.241
2 dependants	7.1	0.16
3 dependants	2	0.045
4 dependants	* 0.3	0.007
5 dependants or more	* 0.1	0.002
Unknown	-	0

Step 4 Apply these proportions to the caseload figure obtained from WPLS 100% data.

E.g. Total (WPLS) with 1 dependant
 $= \text{proportion calculated at (3) above} \times \text{WPLS caseload}$
 $= 0.241 \times 46.3$
 $= 11.16 \text{ thousand}$

Thus the number of Bereavement Benefit claimants with 1 dependant at February 2003 is 11.16 thousand

	Proportion of total cases	Calculated WPLS Caseload (Thousands)
Total	1	46.3
No dependants	0.543	25.13
1 dependant	0.241	11.16
2 dependants	0.16	7.4
3 dependants	0.045	2.09
4 dependants	0.007	0.31
5 dependants or more	0.002	0.1
Unknown	0	-

Important note: CLAIM DURATION

For the majority of variables, the proportions obtained from the 5% and WPLS data are very similar. It is therefore deemed safe to apply the 5% proportions to the WPLS data.

However the distributions obtained for the **claim duration** variable differ between the two data sources. This is because information relating to many recently started claims is received too late for inclusion in the 5% sample data, but is included in the WPLS. The WPLS therefore includes a greater number of recently started claims and a greater proportion of claims of short duration (with compensating smaller proportions of cases in the longer duration bands).

Consequently, for some benefits, a time series of duration will show a sharp change in distribution, occurring between the last quarter for which 5% proportions are applied to WPLS totals, and the first quarter when duration information is obtainable from the WPLS.

A small number of variables related to duration will also be affected. These are:

Incapacity Benefit (IB) - amount in payment, and IB rate in payment. For IB, the rate of payment increases as the claim duration becomes longer. Compared to the 5% sample data, the WPLS records a greater number of recent claims and consequently a greater proportion of cases in the lower amount bands and short term rate.

Income Support - age distribution.

It is known that IS claimants in the youngest age band have shorter claim durations than claimants in older age bands. Because the WPLS is better able to record recent and short claims, the WPLS will consequently show an elevated proportion of younger claimants compared to 5% data.

If the statistics you require are not available from the tabling tool, please contact us:

benefitstats@dwp.gsi.gov.uk

Annex A

WPLS data (based on 100% of cases) available on the Tabulation Tool

Attendance Allowance - cases in payment

Data available from:	May 2002
Analysis available for:	Average weekly amount of benefit Caseload (Thousands)
Breakdowns available:	AA award type Age of claimant Duration of current claim (days) Gender of claimant Government Office region Local Authority of claimant Main Disabling Condition Parliamentary Constituency of claimant (Westminster) Scottish Parliamentary Constituency of claimant Time Series

Bereavement Benefit

Data available from:	May 2002
Analysis available for:	Average weekly amount of benefit Caseload (Thousands)
Breakdowns available:	Age of claimant Duration of current claim (days) Gender of claimant Government Office region Local Authority of claimant Parliamentary Constituency of claimant (Westminster) Scottish Parliamentary Constituency of claimant Time Series Total weekly amount of benefit Type of BB Type of dependent

Carer's Allowance - cases in payment

Data available from: August 2003

Analysis available for: Average weekly amount of benefit
Caseload (Thousands)

Breakdowns available: Age of claimant
Duration of current claim (days)
Gender of claimant
Government Office region
Local Authority of claimant
Parliamentary Constituency of claimant
(Westminster)
Scottish Parliamentary Constituency of claimant
Time Series
Total weekly amount of benefit

Disability Living Allowance - cases in payment

Data available from: May 2002

Analysis available for: Caseload (Thousands)

Breakdowns available: Age of claimant
Care Award Type
Duration of current claim (days)
Gender of claimant
Government Office region
Local Authority of claimant
Main Disabling Condition
Mobility Award Type
Parliamentary Constituency of claimant
(Westminster)
Scottish Parliamentary Constituency of claimant
Time Series

Incapacity Benefit/Severe Disablement Allowance - combined information

Data available from: August 1999

Analysis available for: Average weekly amount of benefit
Caseload (Thousands)

Breakdowns available: Age of claimant
Claimant/Beneficiary
Duration of current claim (days)
Gender of claimant
Government Office region
IB ICD (disease) code
IB rate in payment
Local Authority of claimant
Parliamentary Constituency of claimant (Westminster)
Scottish Parliamentary Constituency of claimant
Time Series
Total weekly amount of benefit
Type of dependent
Working Age/Pension Age split

Income Support

Data available from: August 1999

Analysis available for: Caseload (Thousands)

Breakdowns available: Age of claimant
Age of youngest child dependant
Duration of current claim (days)
Gender of claimant
Government Office region
Local Authority of claimant
Number of children
Parliamentary Constituency of claimant (Westminster)
Partner flag
Scottish Parliamentary Constituency of claimant
Statistical Group
Time Series
Total weekly amount of benefit

Jobseeker's Allowance

Data available from: August 1999

Analysis available for: Caseload (Thousands)

Breakdowns available: Age of claimant
Age of youngest child dependant
Gender of claimant
Government Office region
Local Authority of claimant
Number of children
Parliamentary Constituency of claimant (Westminster)
Partner flag
Scottish Parliamentary Constituency of claimant
Time Series
Total weekly amount of benefit

Pension Credit

Data available from: November 2003

Analysis available for: Average weekly amount of benefit
Caseload (Thousands)

Breakdowns available: Age of claimant
Duration of current claim (days)
Gender of claimant
Government Office region
Local Authority of claimant
Parliamentary Constituency of claimant (Westminster)
Partner flag
Scottish Parliamentary Constituency of claimant
Time Series
Total weekly amount of benefit
Type of Pension Credit

State Pension

Data available from:	May 2002
Analysis available for:	Average weekly amount of benefit Caseload (Thousands)
Breakdowns available:	Age of claimant Category of pension Country code for abroad cases Gender of claimant Government Office region Local Authority of claimant Parliamentary Constituency of claimant (Westminster) Scottish Parliamentary Constituency of claimant Time Series Total weekly amount of benefit Type of dependent

Widow's Benefit

Data available from:	August 1999
Analysis available for:	Average weekly amount of benefit Caseload (Thousands)
Breakdowns available:	Age of claimant Duration of current claim (days) Government Office region Local Authority of claimant Parliamentary Constituency of claimant (Westminster) Scottish Parliamentary Constituency of claimant Time Series Total weekly amount of benefit Type of dependent Type of WB

Client Group - All ages

Data available from:	May 2002
Analysis available for:	Caseload (Thousands)
Breakdowns available:	Age of claimant Benefit combination Duration of oldest current claim (days) Gender of claimant Government Office region Local Authority of claimant Parliamentary Constituency of claimant (Westminster) Partner flag Scottish Parliamentary Constituency of claimant Statistical Group Time Series

Pension Age Client Group

Data available from:	May 2002
Analysis available for:	Caseload (Thousands)
Breakdowns available:	Age of claimant Benefit combination Gender of claimant Government Office region Local Authority of claimant Parliamentary Constituency of claimant (Westminster) Pensioner Statistical Group Scottish Parliamentary Constituency of claimant Statistical Group Time Series

Working Age Client Group

Data available from:	August 1999
Analysis available for:	Caseload (Thousands)
Breakdowns available:	Age of claimant Age of youngest child dependant Benefit combination Duration of oldest current claim (days) Gender of claimant Government Office region Local Authority of claimant Number of children Parliamentary Constituency of claimant (Westminster) Partner flag Scottish Parliamentary Constituency of claimant Statistical Group Time Series

Working Age percentage of population (LA only)

Data available from:	August 1999
Analysis available for:	Percentage of population
Breakdowns available:	Age of claimant Age of youngest child dependant Benefit combination Caseload (Thousands) Duration of oldest current claim (days) Gender of claimant Local Authority of claimant Number of children Partner flag Statistical Group Time Series

Working Age percentage of population

Data available from:	August 1999
Analysis available for:	Percentage of population
Breakdowns available:	Age of claimant Age of youngest child dependant Benefit combination Caseload (Thousands) Duration of oldest current claim (days) Gender of claimant Government Office region Number of children Partner flag Statistical Group Time Series

Annex B

5% sample data available on the Tabulation Tool

Attendance Allowance

Data available from: November 1995
Analysis available for: Caseload (Thousands)
Breakdowns available: Age
Care Rate
Gender
Government Office Region
Local Authority
Main Disabling Condition
Parliamentary Constituency
Time Series

Bereavement Benefit

Data available from: September 2001
Analysis available for: Caseload (Thousands)
Weekly amount in payment (£ per week)
Breakdowns available: Age
Dependant increase
Gender
Government Office Region
Local Authority
Number of dependants
Parliamentary Constituency
Time Series
Type of BB
Weekly amount in payment (£ per week)

Pension Age Client Group

Data available from: May 1996
Analysis available for: Caseload (Thousands)
Breakdowns available: Age
Benefit combination
Gender
Government Office Region
Local Authority
Statistical Group
Time Series
Type of dependant

Client Group Analysis of Children in Working Age families on benefit

Data available from: May 1995
Analysis available for: Caseload (Thousands)
Breakdowns available: Age of dependant child
Benefit Combination
Benefit entitlement route
Duration on oldest current benefit
Family Type
Government Office Region
Local Authority
Number of child dependants
Out-of-work statistical group
Parliamentary Constituency
Statistical Group
Time Series

Children in Working Age families on benefit - Percentage of Population LA only

Data available from: May 1995
Analysis available for: Caseload (Thousands)
Breakdowns available: Age
Benefit Combination
Benefit entitlement route
Duration on oldest current benefit
Family Type
Local Authority
Out-of-work statistical group
Percentage of population
Statistical Group
Time Series

Children in Working Age families on benefit - Percentage of Population

Data available from: May 1995
Analysis available for: Percentage of population
Breakdowns available: Age
Benefit Combination
Benefit entitlement route
Duration on oldest current benefit
Family Type
Government Office Region
Out-of-work statistical group
Statistical Group
Time Series

Disability Living Allowance

Data available from: November 1995
Analysis available for: Caseload (Thousands)
Breakdowns available: Age
Care Rate
Duration
Gender
Government Office Region
Local Authority
Main Disabling Condition
Mobility Rate
Parliamentary Constituency
Time Series

Incapacity Benefit

Data available from: May 1995
Analysis available for: Caseload (Thousands)
Weekly amount in payment (£ per week)
Breakdowns available: Age
Claimant or beneficiary
Diagnosis group
Duration
Gender
Government Office Region
Local Authority
Parliamentary Constituency
Partner
Time Series
Type of IB
Weekly amount in payment (£ per week)

Incapacity Benefit - Working Age claimants

Data available from:	May 1995
Analysis available for:	Caseload (Thousands) Weekly amount in payment (£ per week)
Breakdowns available:	Age Claimant or beneficiary Diagnosis group Duration Gender Government Office Region Local Authority Parliamentary Constituency Partner Time Series Type of IB Weekly amount in payment (£ per week)

Incapacity Benefit/Severe Disablement Allowance combined information

Data available from:	May 1995
Analysis available for:	Caseload (Thousands) Weekly amount in payment (£ per week)
Breakdowns available:	Age Claimant or beneficiary Diagnosis group Duration Gender Government Office Region Local Authority Parliamentary Constituency Partner Time Series Type of IB/SDA Weekly amount in payment (£ per week)

Incapacity Benefit/Severe Disablement Allowance combined - Working Age claimants

Data available from:	May 1995
Analysis available for:	Caseload (Thousands) Weekly amount in payment (£ per week)
Breakdowns available:	Age Claimant or beneficiary Diagnosis group Duration Gender Government Office Region Local Authority Parliamentary Constituency Partner Time Series Type of IB/SDA Weekly amount in payment (£ per week)

Income Support Claimant Information

Data available from:	May 1997
Analysis available for:	Caseload (Thousands) Weekly amount in payment (£ per week)
Breakdowns available:	Age Child dependants Children under 5 with free milk vouchers Duration Family Type Free Milk Voucher Gender Government Office Region Housing Requirements (£ per week) Local Authority Number of dependants Parliamentary Constituency Partner Special Circumstances Statistical Group Time Series Weekly amount in payment (£ per week)

Jobseeker's Allowance Claimant Information

Data available from:	May 1997
Analysis available for:	Caseload (Thousands) Weekly amount in payment (£ per week)
Breakdowns available:	Age Child dependants Duration Family Type Free Milk Voucher Gender Government Office Region Housing Requirements (£ per week) Income Based JSA Local Authority Number of dependents Parliamentary Constituency Partner Time Series Type of JSA Weekly amount in payment (£ per week)

Pension Credit Claimant Information

Data available from:	November 2003
Analysis available for:	Caseload (Thousands) Weekly amount in payment (£ per week)
Breakdowns available:	Age Duration Family Type Gender Government Office Region Local Authority Mortgage Interest Parliamentary Constituency Special Circumstances Time Series Type of Pension Credit Weekly amount in payment (£ per week)

Severe Disablement Allowance

Data available from:	May 1995
Analysis available for:	Caseload (Thousands) Weekly amount in payment (£ per week)
Breakdowns available:	Age Claimant or beneficiary Diagnosis group Duration Gender Government Office Region Local Authority Parliamentary Constituency Partner Time Series Weekly amount in payment (£ per week)

Severe Disablement Allowance - Working Age claimants

Data available from:	May 1995
Analysis available for:	Caseload (Thousands) Weekly amount in payment (£ per week)
Breakdowns available:	Age Claimant or beneficiary Diagnosis group Duration Gender Government Office Region Local Authority Parliamentary Constituency Partner Time Series Weekly amount in payment (£ per week)

State Pension

Data available from:	March 1995
Analysis available for:	Caseload (Thousands) Weekly amount in payment (£ per week) Net Additional Pension (£ per week)
Breakdowns available:	Age Category of Pension Country (detailed) Country summary Gender Government Office Region Increments flag Local Authority Parliamentary Constituency Time Series Type of dependant increase Weekly amount in payment (£ per week)

Client Group analysis of the Working Age

Data available from:	May 1995
Analysis available for:	Caseload (Thousands)
Breakdowns available:	Age Benefit Combination Benefit entitlement route Duration on oldest current benefit Family Type Gender Government Office Region Local Authority Number of child dependants Out-of-work statistical group Parliamentary Constituency Statistical Group Time Series

Working Age benefit claimants - Percentage of population LA only

Data available from: May 1995
Analysis available for: Caseload (Thousands)
Breakdowns available: Age
Benefit Combination
Benefit entitlement route
Duration on oldest current benefit
Family Type
Gender
Local Authority
Number of child dependants
Out-of-work statistical group
Percentage of population
Statistical Group
Time Series

Working Age benefit claimants - Percentage of population

Data available from: May 1995
Analysis available for: Caseload (Thousands)
Breakdowns available: Age
Benefit Combination
Benefit entitlement route
Duration on oldest current benefit
Family Type
Gender
Government Office Region
Number of child dependants
Out-of-work statistical group
Percentage of population
Statistical Group
Time Series

Client Group analysis of Working Age families with children

Data available from: May 1995
Analysis available for: Caseload (Thousands)
Breakdowns available: Age of claimant
Age of youngest child
Benefit Combination
Benefit entitlement route
Duration on oldest current benefit
Family Type
Gender of claimant
Government Office Region
Local Authority
Number of child dependants
Out-of-work statistical group
Parliamentary Constituency
Statistical Group
Time Series

Widow's Benefit

Data available from: March 1995
Analysis available for: Caseload (Thousands)
Weekly amount in payment (£ per week)
Breakdowns available: Age
Dependant increase
Government Office Region
Local Authority
Number of dependants
Parliamentary Constituency
Time Series
Type of WB
Weekly amount in payment (£ per week)