



First Release

14 May 2008
IFD140508SSMAY08

Coverage: Great Britain (unless otherwise stated)

Theme: Social and Welfare

DWP QUARTERLY STATISTICAL SUMMARY

Introduction

This Statistical Summary aims to give users a structured overview of the National Statistics published by the Department for Work and Pensions (DWP). Statistics are grouped by component area of DWP and, for each statistic, links are given for users to access more detailed information.

This release includes data that would have been included within the Statistical Summary scheduled for publication on 13 February, but which was not released.

Key benefit statistics and New Deal statistics from 100% sources are available on an internet-based tabulation tool. A similar tabulation tool derived from 5% sample data is also available, however wherever possible 100% data should be used in preference to 5% estimates, as they are more accurate and form DWP's headline statistics.

The latest national statistics on Benefit claimant, employment programme, labour market decision and vacancies produced by Department for Work and Pensions were released on 14th May 2008 according to the arrangements approved by the UK Statistics Authority. Not all DWP National Statistics are covered by this release. Some statistics have their own first releases but links to these are given throughout.

Key Findings

- The number of people claiming incapacity benefits of working age has fallen by 31 thousand to 2.64 million in the year to November 2007.
- The number of jobseekers decreased steadily between November 2000 and November 2005 - from 949 thousand to 837 thousand - and fallen again to 741 thousand at November 2007.
- The lone parent caseload fell from 906 thousand to 776 thousand between November 2000 and November 2006. This decrease continued in the year to November 2007 when the caseload stood at 742 thousand.
- 3.14 million people had started on a New Deal programme up to February 2008. To date, 1.97 million people have gained a job through the New Deal programme, with 93 thousand people gaining a job through Employment Zones.
- At November 2007 there were 12.18 million people of State Pension age claiming a key benefit, an increase of 233 thousand since November 2006. Of these, 66% were claiming State Pension only.
- At November 2007, there were 11.98 million claimants of State Pension, a rise of 234 thousand on a year earlier. Of these, 37% were male and 63% female.
- At November 2007, there were 2.73 million claimants of Pension Credit (3.34 million including partners), a fall of 4 thousand on a year earlier. Of these, 824 thousand claimed Guarantee Credit only, 1.31 million claimed Guarantee and Savings Credit, and 601 thousand were claiming Savings Credit only.
- At the end of March 2008, the total CSA caseload stood at 1.4 million cases, of which 50% were new scheme cases.
- At November 2007, there were 2.93 million recipients of Disability Living Allowance, 472 thousand recipients of Carer's Allowance, and 1.54 million recipients of Attendance Allowance.

Experimental statistics on benefit flows show:

- There were 583 thousand new claims to Incapacity Benefit and 586 thousand new claims to Income Support in the year to November 2007.
- There were 633 thousand and 629 thousand benefit exits for Incapacity Benefit and Income Support, respectively, in the year to November 2007.

DWP Department for
Work and Pensions

Issued by:
Information Directorate
Department for Work and Pensions

Telephone:
Press Office: 0203 267 5144

Website:
www.dwp.gov.uk

Statistician:
Mike Payne
Information Directorate
Department for Work and Pensions
Level 2
Kings Court
80 Hanover Way
SHEFFIELD
S3 7UF

Telephone: 0114 209 8229
Email:
michael.payne@dwp.gsi.gov.uk

Next publication: August 2008



Contents

1. Working Age

	<i>page</i>
1.1 Working age Client Group	3
Individual Benefits	
1.2 Jobseeker's Allowance	5
1.3 Incapacity Benefits	6
1.4 Income Support	8
1.5 Housing Benefit	9
1.6 Council Tax Benefit	10
1.7 Widow's Benefit & Bereavement Benefit	10
1.8 Fraud and Error statistics (links only)	11
1.9 Take-Up of income-related benefits (links only)	11
1.10 Jobseeker's Allowance sanctions and disallowances	11
1.11 New Deals & Employment Zones	12
1.12 Vacancies handled by Jobcentre Plus	13

2. Pensioners

2.1 Pensioner Client Group	14
2.2 State Pension	15
2.3 Pension Credit	16

3. Disabled and Carers

3.1 Disability Living Allowance	17
3.2 Attendance Allowance	18
3.3 Carer's Allowance	18
3.4 Industrial Injuries Disablement Benefit	19

4. Families & Children

4.1 Child Support Agency cases	20
--------------------------------	----

5. Appeals Service

5.1 Appeals Service lodgements	21
--------------------------------	----

Notes to Editors	22
------------------	----



1. Working Age

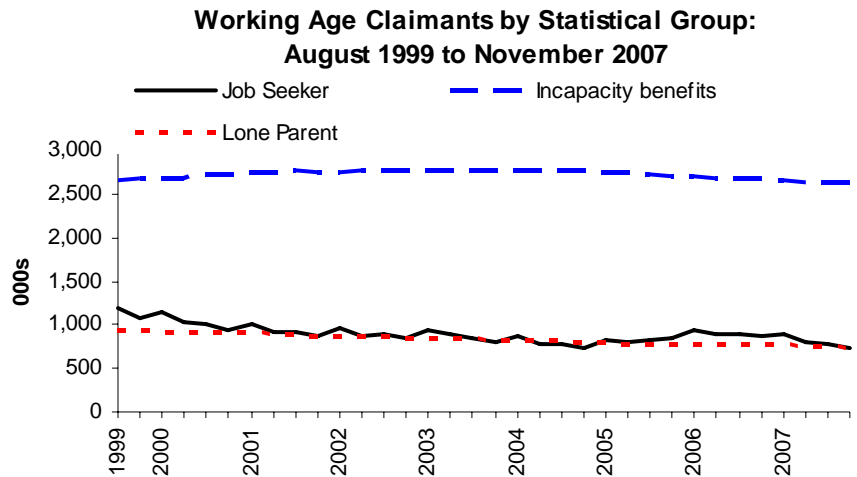
1.1 Working Age client group

Combines data collected for Jobseeker's Allowance, Incapacity Benefit, Severe Disablement Allowance, Disability Living Allowance, Carer's Allowance, Widow's Benefit, Bereavement Benefit and Income Support for working age claimants (including Pension Credit for males aged 60 to 64)

Between November 2000 and November 2005, the number of jobseekers fell from 949 thousand to 837 thousand, and rose to 860 thousand in November 2006. It has fallen again to 741 thousand at November 2007.

The incapacity benefits caseload increased gradually to November 2003 and has continued to fall to November 2007. Headline figures for incapacity benefits are shown in Table 1.2 and differ slightly to figures shown in Table 1.1 due to slight methodological differences.

The lone parent caseload fell from 906 thousand to 776 thousand between November 2000 and November 2006. This decrease continued in the year to November 2007, to stand at 742 thousand.



Latest statistical data available from : <http://www.dwp.gov.uk/asd/tabtool.asp>

Table 1.1 Working Age claimants by Statistical Group: August 1999 to November 2007

	<i>Thousands</i>							
	Total ⁹	Job Seeker ²	Incapacity Benefits ³	Lone Parent ⁴	Carer ⁵	Income Related	Disabled ^{7,9}	Bereaved ^{8,9}
Aug-99	5,531.06	1,181.86	2,655.38	945.06	316.13	222.44
Nov-99	5,432.27	1,083.03	2,674.71	930.24	316.50	218.37
Feb-00	5,493.93	1,154.97	2,676.39	923.47	313.58	216.97
May-00	5,371.03	1,037.01	2,686.30	919.43	310.88	210.80
Aug-00	5,363.82	1,015.83	2,714.85	920.10	309.67	197.95
Nov-00	5,288.68	948.66	2,722.57	905.76	311.56	196.69
Feb-01	5,359.76	1,001.08	2,750.45	908.21	313.96	182.81
May-01	5,261.80	909.15	2,753.66	900.43	319.59	180.15
Aug-01	5,262.72	907.68	2,763.62	900.22	323.83	175.41
Nov-01	5,197.15	880.36	2,746.02	878.59	328.62	179.08
Feb-02	5,264.21	955.45	2,745.58	877.11	332.02	176.62
May-02	5,455.75	877.38	2,765.73	870.95	335.79	165.60	245.27	195.02
Aug-02	5,481.48	890.54	2,769.36	875.04	339.91	167.19	249.72	189.71
Nov-02	5,428.63	850.05	2,776.56	856.23	343.72	161.36	256.58	184.13
Feb-03	5,514.28	946.16	2,776.54	848.85	346.17	156.33	260.92	179.31
May-03	5,459.68	885.78	2,773.61	855.81	347.94	155.96	266.25	174.33
Aug-03	5,425.85	851.37	2,777.06	851.73	350.41	155.26	270.15	169.88
Nov-03	5,363.74	803.88	2,780.49	831.75	353.25	154.20	275.51	164.67
Feb-04	5,426.42	867.42	2,777.53	830.25	355.81	155.20	280.12	160.09
May-04	5,327.35	777.40	2,772.85	823.27	359.25	155.42	283.33	155.83
Aug-04	5,321.26	769.25	2,774.93	818.10	360.08	158.20	289.12	151.59
Nov-04	5,270.77	741.06	2,772.18	796.53	361.42	157.94	294.15	147.49
Feb-05	5,327.77	819.68	2,757.65	793.13	362.04	153.93	297.23	144.11
May-05	5,289.13	800.66	2,741.62	789.32	363.76	151.09	300.96	141.73
Aug-05	5,302.72	825.11	2,725.47	789.35	365.08	153.71	305.84	138.17
Nov-05	5,287.66	836.71	2,710.50	778.56	363.34	155.74	309.31	133.51
Feb-06	5,384.74	935.20	2,705.47	777.09	368.66	153.06	313.85	131.40
May-06	5,325.77	895.88	2,688.02	774.86	368.50	152.70	317.04	128.78
Aug-06	5,335.22	900.92	2,683.00	783.18	369.81	153.12	319.13	126.06
Nov-06	5,288.34	860.22	2,672.96	775.62	371.71	161.10	326.64	120.09
Feb-07	5,321.68	904.04	2,662.13	771.35	373.83	163.32	329.75	117.26
May-07	5,207.27	807.27	2,643.21	765.62	374.84	167.05	335.13	114.15
Aug-07	5,187.14	788.45	2,641.11	763.55	376.03	167.84	340.61	109.55
Nov-07	5,124.68	741.10	2,641.70	741.83	379.35	167.29	346.16	107.25

Source: DWP, Work & Pensions Longitudinal Study

1. Claimants have been assigned to a statistical group according to a hierarchy. The order is as shown in the table, i.e. 'Job Seekers', followed by 'Incapacity Benefits', etc. For example, lone parents with both Incapacity Benefits and Income Support will fall into the 'Incapacity Benefits' category.
2. 'Jobseekers' are recipients of Jobseeker's Allowance.
3. 'Incapacity Benefits' refer to recipients of Incapacity Benefit or Severe Disablement Allowance.
4. 'Lone Parents' are single recipients of Income Support with a child under 16.
5. 'Carers' are recipients of Carer's Allowance.
6. 'Others on Income Related Benefit' are other recipients of Income Support (including Income Support Disability Premium) or Pension Credit.
7. 'Disabled' are recipients of Disability Living Allowance. Industrial Injuries benefits data is not available.
8. 'Bereaved' are recipients of Widow's Benefit or Bereavement Benefit.
9. Totals are not shown prior to May 2002 as Disability Living Allowance data is not available. Therefore complete data for the 'Disabled' and 'Bereaved' statistical groups are not available.
10. Housing Benefit and Council Tax Benefit data is not currently available but is expected to be added during 2006.
11. ".." denotes not available.



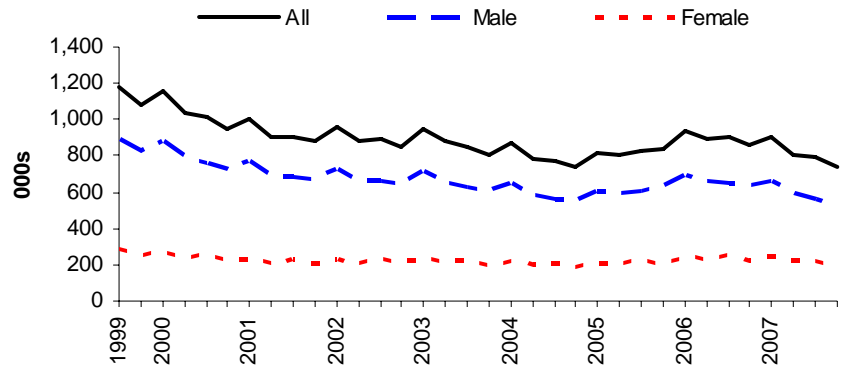
1.2 Jobseeker's Allowance

Jobseeker's Allowance (JSA) was introduced on 7 October 1996 and has both contributory and income-related elements. It is paid to people under state pension age who are available for and actively seeking work of at least forty hours per week

JSA statistics presented here and available in the Tabulation Tool via link below have been revised since the last Statistical Summary, following improvements to the methodology in compiling the statistics. Full details of the improvements were contained in a methodological paper, released on 20th March 2008: (http://www.dwp.gov.uk/asd/asd1/improvements_to_JSA.pdf)

At November 2007, the total number of Jobseeker's Allowance claimants was 741 thousand. Female claimants represented 27% of the JSA caseload (199 thousand), while males represented 73% (543 thousand). The total caseload has fallen by 119 thousand since a year earlier.

**Jobseekers Allowance by Gender:
August 1999 to November 2007**



Latest statistical data available from :

<http://www.dwp.gov.uk/asd/tabtool.asp>



1.3 Incapacity Benefits

Incapacity benefits consist of Incapacity Benefit (introduced on 13 April 1995 and paid to people who are incapable of work and who have paid sufficient contributions throughout their working life) and Severe Disablement Allowance (SDA).

At November 2007, there were 2.64 million working age claimants of incapacity benefits (Incapacity Benefit or Severe Disablement Allowance), a fall of 31 thousand on a year earlier. 58% of claimants were men and 42% women. Both the male and female caseloads are now falling: males by 24 thousand and females by 8 thousand in the year to November 2007.

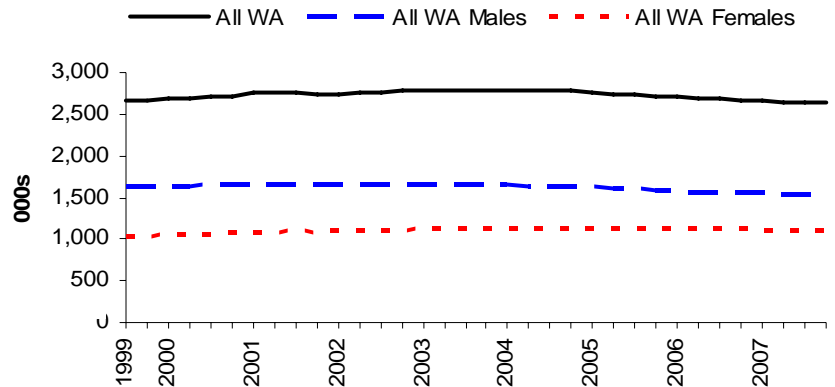
At November 2007, 62% (1.63 million) of working age claimants were beneficiaries (i.e. were paid benefit), with the remaining 1,011 thousand receiving National Insurance Credits only. A further 42 thousand were claimants above State Pension Age: these were almost all recipients of Severe Disablement Allowance.

There were 152 thousand new claimants of incapacity benefits in the November 2007 quarter, which represents 6% of the November caseload.

Over the same period, 152 thousand claimants left the benefits, 6% of the caseload at November 2007.

In the year to November 2007, there were a total of 583 thousand new claims for incapacity benefits and 633 thousand claims were closed. This compares with 578 thousand new claims and 613 thousand closed claims for the year to November 2006.

**IB/SDA Working Age claimants by Gender:
August 1999 to November 2007**



Latest statistical data available from :

<http://www.dwp.gov.uk/asd/tabtool.asp>



Table 1.2 Incapacity Benefits claimants & beneficiaries: August 1999 to November 2007

Thousands

	All IB/SDA claimants			All IB/SDA beneficiaries		
	All ages	Working Age	State Pension Age	All ages	Working Age	State Pension Age
Aug-99	2,732.50	2,655.46	77.05	1,978.56	1,902.14	76.42
Nov-99	2,738.13	2,674.81	63.32	1,967.96	1,905.13	62.83
Feb-00	2,724.03	2,676.50	47.53	1,949.96	1,902.81	47.15
May-00	2,728.09	2,686.40	41.69	1,941.20	1,899.81	41.39
Aug-00	2,756.51	2,714.95	41.55	1,949.08	1,907.75	41.33
Nov-00	2,764.14	2,722.65	41.49	1,945.44	1,904.11	41.33
Feb-01	2,792.03	2,750.53	41.50	1,961.19	1,919.80	41.39
May-01	2,795.34	2,753.74	41.60	1,955.00	1,913.52	41.49
Aug-01	2,805.45	2,763.87	41.58	1,947.63	1,906.15	41.49
Nov-01	2,787.71	2,746.07	41.64	1,926.79	1,885.22	41.56
Feb-02	2,787.22	2,745.67	41.56	1,923.90	1,882.45	41.45
May-02	2,807.63	2,765.82	41.80	1,925.86	1,884.16	41.70
Aug-02	2,811.43	2,769.70	41.73	1,918.07	1,876.43	41.63
Nov-02	2,818.48	2,776.64	41.83	1,912.53	1,870.79	41.74
Feb-03	2,818.57	2,776.63	41.94	1,908.90	1,867.06	41.84
May-03	2,815.66	2,773.71	41.95	1,897.03	1,855.19	41.84
Aug-03	2,819.05	2,777.28	41.77	1,888.80	1,847.11	41.69
Nov-03	2,822.27	2,780.58	41.70	1,881.88	1,840.25	41.63
Feb-04	2,819.16	2,777.62	41.54	1,873.81	1,832.35	41.46
May-04	2,814.71	2,772.93	41.79	1,859.96	1,818.25	41.70
Aug-04	2,817.01	2,775.10	41.90	1,849.78	1,807.95	41.83
Nov-04	2,814.41	2,772.23	42.17	1,840.28	1,798.18	42.10
Feb-05	2,799.87	2,757.71	42.17	1,827.15	1,785.08	42.08
May-05	2,783.72	2,741.67	42.05	1,809.98	1,768.02	41.96
Aug-05	2,767.74	2,725.55	42.20	1,793.00	1,750.89	42.11
Nov-05	2,752.90	2,710.74	42.16	1,780.31	1,738.21	42.10
Feb-06	2,747.49	2,705.58	41.91	1,768.66	1,726.82	41.84
May-06	2,730.00	2,688.14	41.86	1,750.91	1,709.12	41.79
Aug-06	2,724.98	2,683.13	41.85	1,738.64	1,696.87	41.78
Nov-06	2,714.95	2,673.05	41.90	1,724.35	1,682.52	41.83
Feb-07	2,704.10	2,662.21	41.89	1,711.63	1,669.81	41.82
May-07	2,685.32	2,643.29	42.03	1,692.66	1,650.71	41.95
Aug-07	2,683.16	2,641.11	42.05	1,681.86	1,639.88	41.98
Nov-07	2,683.75	2,641.71	42.05	1,673.10	1,631.12	41.98

Source: DWP, Work & Pensions Longitudinal Study

1. *IB : Incapacity benefit. SDA : Severe Disablement Allowance.*
2. *Figures on IB Beneficiaries show those claimants who are receiving money. IB Claimants include these beneficiaries, but also those receiving National Insurance Credits and no monetary payment.*
3. *'Incapacity Benefits' refer to recipients of Incapacity Benefit or Severe Disablement Allowance. Numbers of working age claimants of incapacity benefits (IB/SDA) are shown in both the Working Age Client Group and IB/SDA sections of this release. Working age IB/SDA totals vary slightly between the two sections (the differences are about 0.5%) because of minor differences in methodology.*



1.4 Income Support

Income Support (IS) was introduced on 11 April 1988 and is an income-related benefit that can be claimed by people aged 16-59 that work fewer than 16 hours a week and have insufficient income to meet their needs. Prior to the introduction of Pension Credit in October 2003, IS was available to people aged 60 and over.

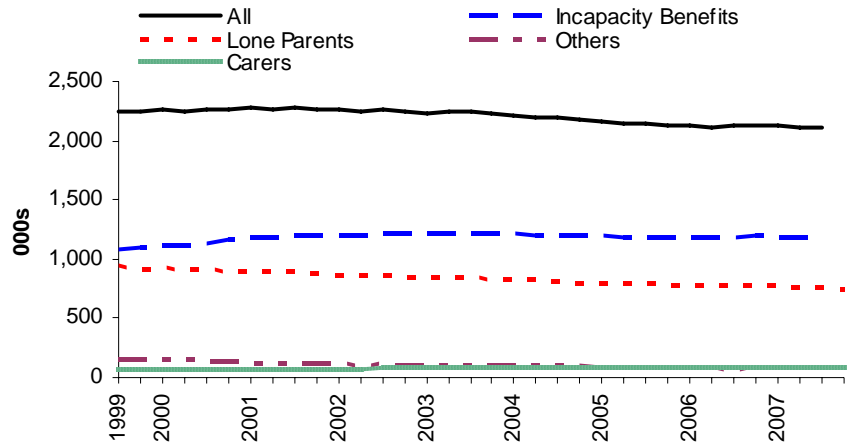
At November 2007, the total number of Income Support (IS) claimants was 2.10 million. Claimants of incapacity benefits represented 57% of the IS caseload (1.19 million). Lone Parents (all single claimants with dependants excluding claimants of incapacity benefits) represented 35% of the IS caseload (742 thousand), while Carers and Others represented 8% of the caseload (165 thousand).

Pension Credit (PC) replaced Minimum Income Guarantee (MIG) in Income Support on 6 October 2003. MIG claimants have been excluded from these data.

There were 153 thousand new claimants of Income Support in the November 2007 quarter, which represents 7% of the November caseload. Over the same period, 175 thousand claimants left the benefit, 8% of the caseload at end of November 2007.

In the year to November 2007, there were a total of 586 thousand new claims for Income Support and 629 thousand claims were closed. This compares with 575 thousand new claims and 572 thousand closed claims for the year to November 2006.

**Income Support by Statistical Group:
August 1999 to November 2007**



Latest statistical data available from :

<http://www.dwp.gov.uk/asd/tabtool.asp>



Table 1.3 Income Support Lone Parents claimants: November 2007

Thousands

	Total	Female	Male
all ages	741.82	708.27	33.55
unknown age	0.01	0.01	0.00
under 18	5.81	5.79	0.02
18-24	155.91	154.49	1.42
25-34	273.36	265.23	8.13
35-44	236.66	221.08	15.58
45-54	65.32	58.05	7.27
55-59	4.78	3.63	1.15

1. '-' in the table denotes nil or negligible.
2. Pension Credit (PC) replaced the Minimum Income Guarantee (MIG) in Income Support on 6th October 2003. MIG claimants have been excluded from these data.

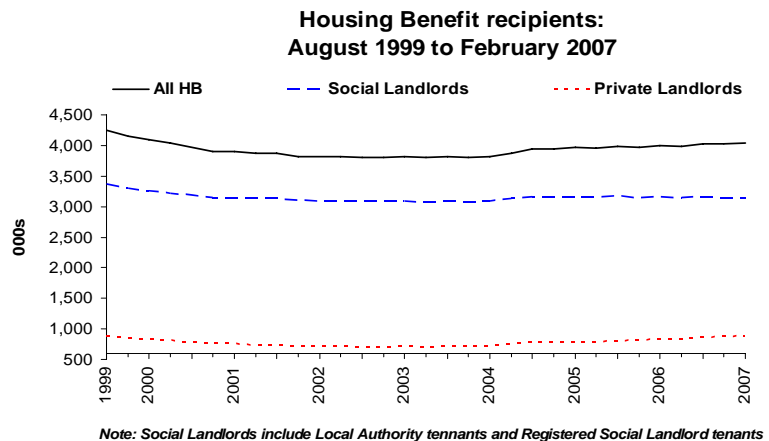
1.5 Housing Benefit

Housing Benefit (HB) was introduced on 1 April 1983 and is an income-related benefit designed to help people on low incomes pay for rented accommodation whether in or out of work

At February 2007 there were 4.04 million recipients of Housing Benefit, of whom 1.52 million were aged 60 and over. The average weekly amount of Housing Benefit was £68.

72% of Housing Benefit recipients were also in receipt of Income Support, income-based Jobseeker's Allowance or Pension Credit (GC).

Figures for May 2007 are not yet available as we are changing data sources and therefore increasing quality assurance to ensure accuracy.



Latest statistical data available from : <http://www.dwp.gov.uk/asd/hbctb.asp>



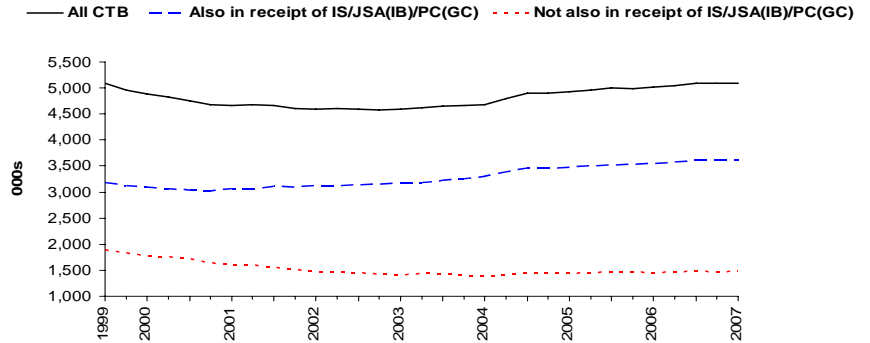
1.6 Council Tax Benefit

Council Tax Benefit (CTB) was introduced on 1 April 1993 and is an income-related benefit, calculated in a similar way to Housing Benefit, which has been designed to help people on low incomes pay their Council Tax

At February 2007 there were 5.10 million recipients of Council Tax Benefit (figure excludes second adult rebates), of whom 2.55 million were aged 60 and over. The average weekly amount of Council Tax Benefit was £14. 71% of Council Tax Benefit recipients were also in receipt of Income Support, income-based Jobseeker's Allowance or Pension Credit (GC).

Figures for May 2007 are not yet available as we are changing data sources and therefore increasing quality assurance to ensure accuracy.

**Council Tax Benefit recipients:
August 1999 to February 2007**



Latest statistical data available from <http://www.dwp.gov.uk/asd/hbctb.asp>

1.7 Widow's Benefit & Bereavement Benefit

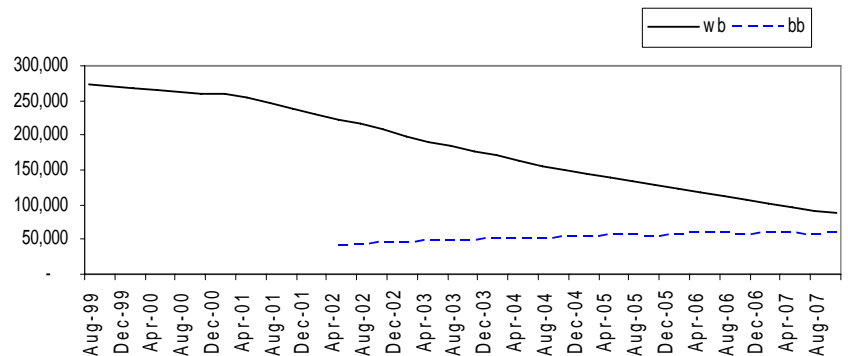
Widow's Benefit (WB) was introduced on 6 July 1948 and is payable to women widowed between 11 April 1988 and 8 April 2001 inclusive. There are three types of WB: Widow's Payment, Widowed Mother's Allowance and Widow's Pension. Women widowed before 11 April 1988 continue to receive Widow's Benefit based on the rules that existed before that date

Bereavement Benefit (BB) was introduced on 9 April 2001 as a replacement for Widow's Benefit. It is payable to both men and women widowed on or after 9 April 2001. There are three types of BB: Bereavement Payment, Widowed Parent's Allowance and Bereavement Allowance

At November 2007, there were 87 thousand claimants of Widow's Benefit, a fall of 20 thousand on a year earlier. Of these, 73.6 thousand were in receipt of Widow's Pension and 13.7 thousand Widowed Mother's Allowance

At November 2007, there were 58 thousand claimants of Bereavement Benefit, an increase of 1 thousand on a year earlier. Of these, 20 thousand were in receipt of Bereavement Allowance and 38 thousand in receipt of Widowed Parent's Allowance.

Widow's Benefit and Bereavement Benefit recipients: August 1999 to Nov 2007



Latest statistical data available from : <http://www.dwp.gov.uk/asd/tabtool.asp>



1.8 Fraud and Error statistics (link)

National Statistics are published regularly, presenting six-monthly estimates of fraud and error in claims for Income Support, Jobseeker’s Allowance, Pension Credit and Housing Benefit, along with an annual estimate of the level of fraud and error in the benefit system as a whole. One-off benefit reviews have been carried out from time to time to estimate fraud and error in claims for other benefits. All these reports can be found at www.dwp.gov.uk/asd/asd2/fraud_error.asp.

1.9 Take-Up of Income-Related Benefits (link)

Publications contain information on the take-up of the main income-related benefits in Great Britain: Income Support, Pension Credit, Housing Benefit, Council Tax Benefit and Jobseeker’s Allowance (income based). Take-up is measured in two ways. Expenditure take-up compares the total amount of benefit received in the course of a year with the total amount that would have been received if everyone took up their entitlement for the full period of entitlement. Caseload take-up compares the number of benefit claimants – averaged over the year – with the number who would be receiving if everyone took up their entitlement for the full period of entitlement. Data is sourced from the Family Resources Survey and administrative benefit records. Latest published figures are available at <http://www.dwp.gov.uk/asd/irb.asp>

1.10 Jobseeker’s Allowance sanction and disallowance decisions

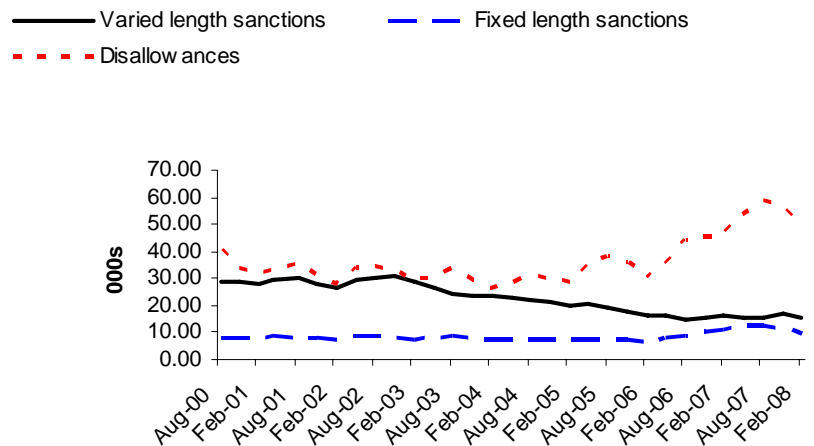
A JSA claimant can have their claim sanctioned (payment is temporarily suspended) or disallowed (entitlement ends) if they are deemed not to have just cause for failing to fulfil the conditions of their claim. Sanctions can be ‘Varied length’ (anything up to 26 weeks) or ‘Fixed length’ (2,4 or 26 weeks). Disallowances result in the claim ending.

In the quarter ending February 2008 there were 133 thousand decisions made, of which 75 thousand were adverse decisions (i.e. a sanction or disallowance was applied).

Of these, 16 thousand were varied length sanctions, 10 thousand were fixed length sanctions and 50 thousand were disallowance decisions. 56% of decisions made in this quarter resulted in an adverse decision.

NB – this summary includes data on decisions made for sanction referrals only, not opinions.

Adverse decisions for JSA Labour Market questions for sanctions and disallowances per quarter: August 2000 to February 2008



Latest statistical data available from : <http://83.244.183.180/sanction/sanction/LIVE/tabtool.html>



1.11 New Deals & Employment Zones

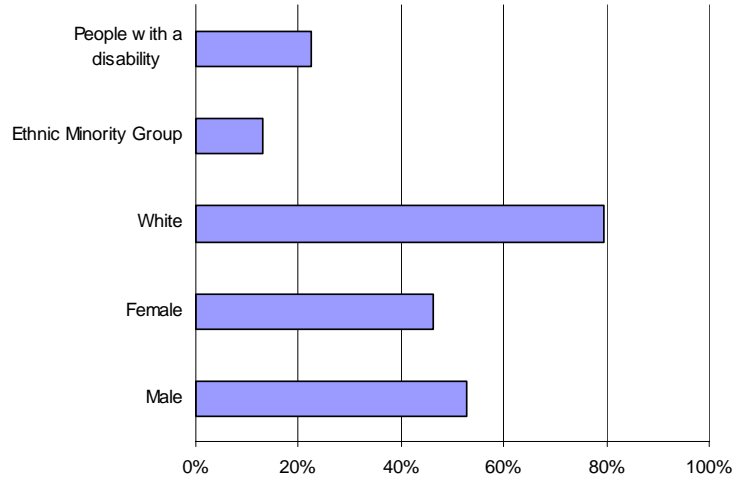
New Deal for Young People was established in 1998 aimed at people aged 18 to 24 unemployed for at least 6 months. Since then a range of other mandatory and voluntary New Deal programmes have been established aimed at specific client groups.

3.14 million people had started on a New Deal programme up to February 2008.

To date, some 1.97 million people have gained a job through the New Deal programme, with over 93 thousand people also gaining a job through Employment Zones.

Statistics relating to current participants and leavers from ND50plus and NDDP have been withdrawn. A review of these statistics indicated that the statistics were not an accurate reflection of the actual level of active participation on these programmes. Development work to improve these statistics is underway and improved statistics will be released as soon as possible.

People starting New Deal, cumulative to February 2008



Latest statistical data available from: http://www.dwp.gov.uk/asd/asd1/tabtools/tabtool_nd.asp

Table 1.4 Summary of New Deal and Employment Zones

	New Deal for:						Employment Zones
	Young People	25plus	Lone Parents	Disabled People	50+ ³	Partners ⁴	
<i>latest data</i> ¹ :							
People starting ²	1,282.8	757.5	910.6	293.8	95.4	17.0	193.1
People gaining a job	806.5	323.3	554.3	172.5	181.1	6.9	93.5

Source: DWP, New Deal Evaluation Databases

1. Latest data relates to end February 2008 for people starting NDYP, ND25plus, NDLP, NDDP, ND50plus, and NDP. For people gaining a job through NDYP, ND25plus, NDLP, NDDP, ND50plus, and NDP latest data relates to end of November 2007. Latest EZ data is to January 2008.
2. The sum of people starting and gaining a job for each separate New Deal will not equal the number of people starting and gaining a job through New Deal as a whole (as indicated above) because some people will start and gain a job through more than one New Deal programme.
3. Starts for ND50+ are from Jan 2004 onwards. The jobs figures for ND50+ include 98,040 people who had received Employment Credit up to March 2003.
4. Starts for NDP include 7,820 starts up to March 2004; jobs for NDP include 1,860 jobs up to March 2004.



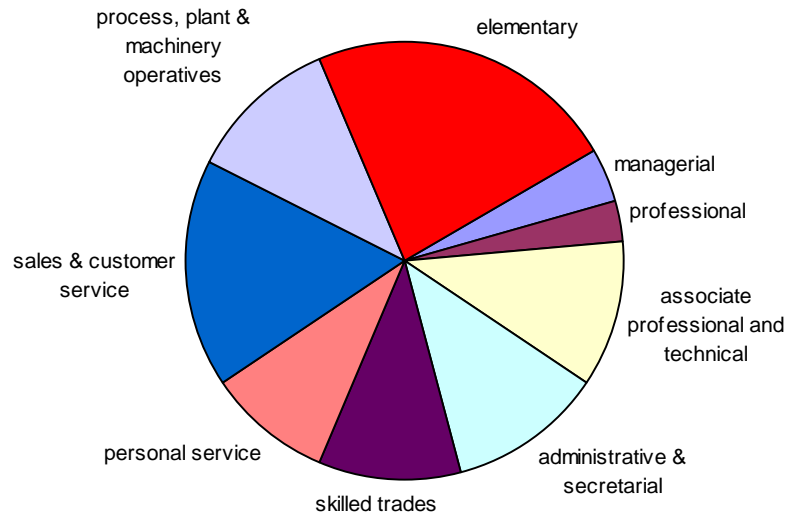
1.12 Vacancies handled by Jobcentre Plus

As the Public Employment Service for Great Britain, Jobcentre Plus handle a significant share of all vacancies advertised by employers, albeit that vacancies notified to Jobcentre Plus do not represent the total number of vacancies in the whole economy

On average, 339 thousand vacancies were notified to Jobcentre Plus between January and March 2008. Most commonly these are for elementary occupations (23%) and sales/customer services (17%). 14% of notified vacancies are in the North West region compared to 10% in London, 5% Wales and 9% Scotland

As at March 2008, the number of unfilled vacancies available to jobseekers was 398 thousand.

Vacancies notified by occupation: Jan-Mar 2008



Latest statistical data available from <http://www.dwp.gov.uk/asd/vacancies.asp>

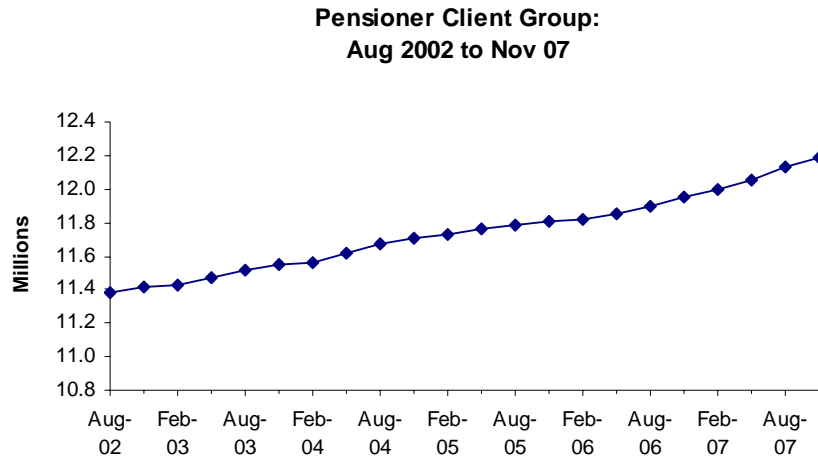


2. Pensioners

2.1 Pensioner client group

The Pensioner Client Group covers claimants, over State Pension age (currently 60 for females and 65 for males), of at least one of the following benefits: State Pension, Pension Credit, Attendance Allowance, Widow's Benefit, Disability Living Allowance, Incapacity Benefit, and Severe Disablement Allowance. They are split into statistical groups that reflect their main reason for claiming benefit

At November 2007 there were 12.18 million claimants in the Pensioner Client Group, an increase of 233 thousand since November 2006. Of these, 21% were in receipt of Pension Credit. 48% of these Pension Credit claimants were disabled.



Latest statistical data available from : <http://www.dwp.gov.uk/asd/tabtool.asp>

Table 2.1 Pensioner Client Group recipients: February 2003 to November 2007

		Thousands							
	Total	SP and PC: Disabled	SP and PC: Not Disabled	SP but not PC: Disabled	SP but not PC: Not Disabled	PC but not SP: Disabled	PC but not SP: Not Disabled	Neither SP nor PC: Disabled	Neither SP nor PC: Not Disabled
Feb-03	11,430.79	704.92	717.54	1,437.51	8,367.51	70.48	68.46	39.34	25.04
May-03	11,473.09	713.55	723.21	1,455.05	8,376.88	70.78	69.30	39.34	24.97
Aug-03	11,515.97	725.58	734.00	1,474.14	8,378.73	71.00	69.44	38.55	24.53
Nov-03	11,544.62	806.98	952.06	1,414.29	8,165.73	71.35	70.28	39.17	24.76
Feb-04	11,557.87	868.52	1,083.74	1,360.45	8,039.64	71.27	70.62	38.89	24.72
May-04	11,620.15	959.75	1,193.56	1,296.11	7,964.86	71.80	71.35	38.08	24.64
Aug-04	11,668.11	1,003.82	1,245.69	1,282.39	7,929.91	72.57	71.81	37.76	24.16
Nov-04	11,710.58	1,028.05	1,255.69	1,280.46	7,938.11	73.38	72.83	37.97	24.10
Feb-05	11,726.47	1,037.26	1,268.33	1,273.89	7,938.28	73.49	73.51	37.74	23.98
May-05	11,760.74	1,052.43	1,281.60	1,281.06	7,939.49	73.17	72.88	37.11	23.00
Aug-05	11,786.58	1,065.96	1,280.72	1,298.46	7,933.04	73.71	73.80	37.60	23.30
Nov-05	11,804.43	1,075.10	1,278.42	1,307.14	7,929.69	75.54	75.42	39.48	23.63
Feb-06	11,817.23	1,081.17	1,277.97	1,315.46	7,934.50	73.53	73.75	37.77	23.08
May-06	11,847.97	1,088.48	1,278.31	1,322.93	7,949.50	73.76	74.05	38.06	22.88
Aug-06	11,896.50	1,100.55	1,274.33	1,338.09	7,973.44	74.29	74.59	38.42	22.78
Nov-06	11,949.62	1,113.70	1,269.09	1,351.57	8,004.82	74.87	74.34	38.69	22.54
Feb-07	11,992.45	1,114.06	1,260.09	1,356.42	8,052.20	74.56	74.19	38.60	22.33
May-07	12,053.77	1,122.36	1,252.29	1,370.93	8,097.85	74.82	74.26	38.97	22.29
Aug-07	12,127.16	1,133.46	1,243.25	1,389.71	8,152.28	74.55	73.62	38.92	21.37
Nov-07	12,182.27	1,140.25	1,234.23	1,403.83	8,197.32	74.21	73.15	38.72	20.56

Source: DWP, Work & Pensions Longitudinal Study

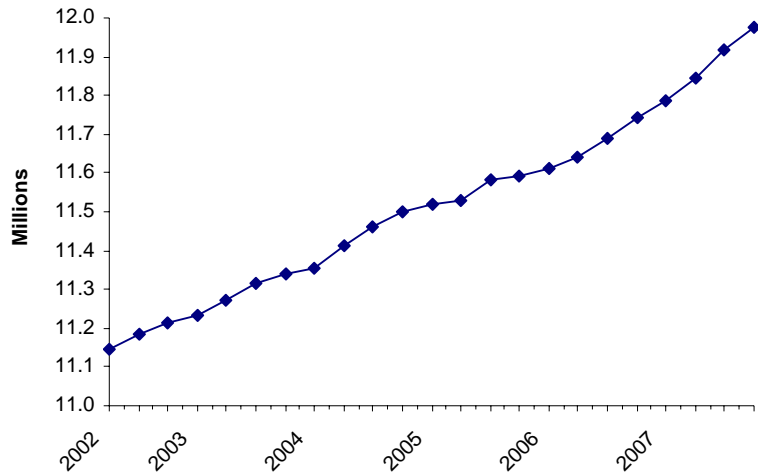
2.2 State Pension

State Pension (SP) was introduced on 1 January 1909 and is paid to people who have reached the state pension age (65 for men, 60 for women) and who fulfil the residency and contributions conditions

At November 2007, there were 11.98 million claimants of State Pension, a rise of 234 thousand on a year earlier. Of these, 37% were male and 63% female.

The average weekly amount in payment at November 2007 was £ 91.93, a rise of £4.01 since November 2006.

**State Pension Recipients:
Aug 2002 to Nov 2007**



Latest statistical data available from : <http://www.dwp.gov.uk/asd/tabtool.asp>

Table 2.2 State Pension recipients: February 2003 to November 2007

	Thousands		
	All	Male	Female
Feb-03	11,232.29	4,197.77	7,034.53
May-03	11,271.62	4,216.74	7,054.88
Aug-03	11,315.22	4,237.46	7,077.76
Nov-03	11,340.71	4,249.69	7,091.01
Feb-04	11,354.10	4,255.94	7,098.16
May-04	11,416.15	4,281.06	7,135.09
Aug-04	11,466.30	4,301.68	7,164.61
Nov-04	11,504.32	4,315.80	7,188.52
Feb-05	11,519.88	4,322.52	7,197.36
May-05	11,556.81	4,342.15	7,214.66
Aug-05	11,580.50	4,354.75	7,225.74
Nov-05	11,592.75	4,362.20	7,230.55
Feb-06	11,611.59	4,369.79	7,241.80
May-06	11,641.83	4,379.54	7,262.29
Aug-06	11,689.12	4,393.60	7,295.52
Nov-06	11,742.01	4,408.91	7,333.10
Feb-07	11,785.67	4,418.99	7,366.68
May-07	11,846.43	4,437.99	7,408.44
Aug-07	11,919.12	4,463.09	7,456.04
Nov-07	11,976.03	4,484.97	7,491.06

Source: DWP, Work & Pensions Longitudinal Study



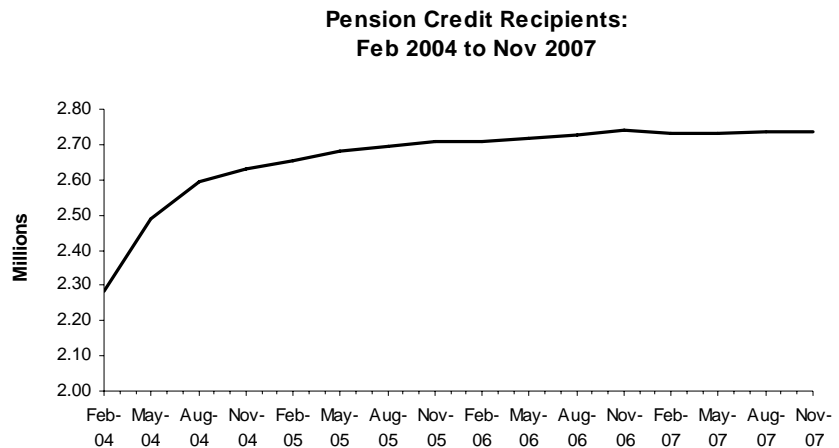
2.3 Pension Credit

Pension Credit (PC) was introduced on 6 October 2003 and replaced Minimum Income Guarantee (MIG). For people aged 60 or over, the Guarantee Credit element guarantees an income at a set level. People aged 65 or over (and couples where one member is 65 or over) may also be entitled to Savings Credit if they have modest income from savings, investments or a second pension

At November 2007, there were 2.73 million claimants of Pension Credit (3.34 million including partners), a fall of 4 thousand on a year earlier. Of these, 824 thousand claimed Guarantee Credit only, 1.31 million claimed Guarantee and Savings Credit, and 601 thousand claimed Savings Credit only.

The average weekly amount of Pension Credit in payment at November 2007 was £50.34, a rise of £3.44 since November 2006.

Experimental statistics on flows on and off Pension Credit have been temporarily withdrawn whilst investigations into quality assurance issues are carried out.



Latest statistical data available from : <http://www.dwp.gov.uk/asd/tabtool.asp>



Table 2.3 Pension Credit claimants: February 2004 to november 2007

Thousands

	Total	Guarantee Credit only	Guarantee Credit & Savings Credit	Savings Credit only	Still on Minimum Income Guarantee
Feb-04	2,282.29	719.18	1,196.59	365.26	1.25
May-04	2,490.76	735.03	1,269.45	485.98	0.31
Aug-04	2,592.59	749.17	1,293.25	549.99	0.18
Nov-04	2,629.58	759.90	1,298.96	570.58	0.14
Feb-05	2,654.67	763.15	1,313.11	578.36	0.06
May-05	2,682.73	767.26	1,321.68	593.74	0.04
Aug-05	2,696.66	772.40	1,317.18	607.04	0.04
Nov-05	2,708.05	776.94	1,313.48	617.60	0.04
Feb-06	2,709.22	773.16	1,332.11	603.93	0.04
May-06	2,717.39	775.57	1,343.23	598.56	0.02
Aug-06	2,728.15	787.30	1,334.41	606.41	0.02
Nov-06	2,738.56	798.13	1,325.87	614.54	0.02
Feb-07	2,730.94	800.11	1,327.78	603.03	0.03
May-07	2,733.50	805.73	1,330.09	597.65	0.02
Aug-07	2,735.72	814.42	1,321.95	599.33	0.03
Nov-07	2,734.54	823.57	1,310.05	600.90	0.03

Source: DWP, Work & Pensions Longitudinal Study

1. Pension Credit replaced MIG on 6 October 2003.
2. A small number of MIG cases are yet to convert to PC.

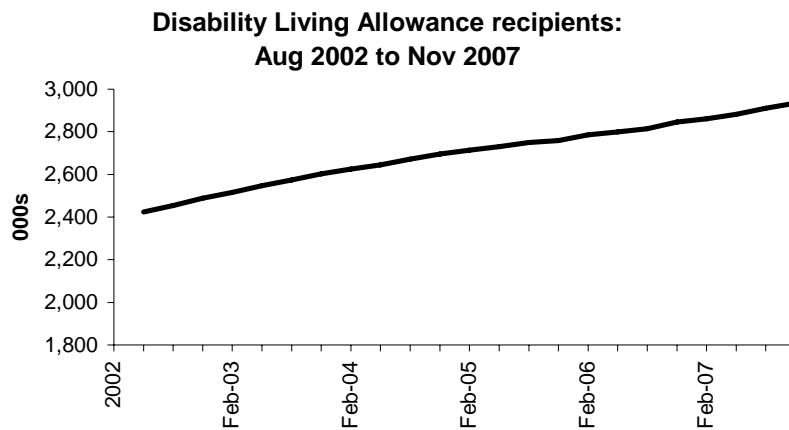
3. Disabled and Carers

3.1 Disability Living Allowance

Disability Living Allowance (DLA) was introduced on 1 April 1992 and is a benefit for people who have become disabled before the age of 65 and who need assistance with personal care or mobility

At November 2007, 2.93 million people were receiving Disability Living Allowance (not including suspended cases), a rise of 89 thousand on a year earlier. 50% of claimants were male. Both the male and female caseloads are rising, males by 42 thousand and females by 47 thousand in the year to November 2007.

At November 2007, 10% of recipients were children, 58% were working age and 32% were pension age (a small number are an unknown age).



Latest statistical data available from : <http://www.dwp.gov.uk/asd/tabtool.asp>

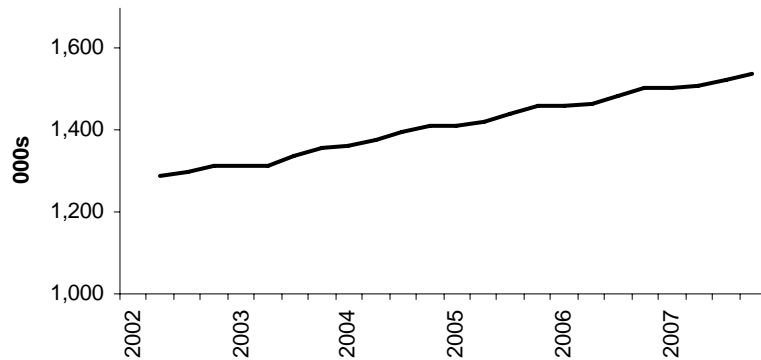


3.2 Attendance Allowance

Attendance Allowance (AA) was introduced on 6 December 1971 and is a benefit for people over the age of 65 who are so severely disabled, physically or mentally, that they need a great deal of help with personal care or supervision. Those requiring constant help receive the higher rate of benefit.

At November 2007 there were 1.54 million people receiving Attendance Allowance (excluding suspended cases), a rise of 36 thousand on a year earlier. Of these, 32% were male and 68% female. Both the male and female caseloads are rising, males by 17 thousand and females by 19 thousand in the year to November 2007. 66% of claimants were aged 80 or over.

**Attendance Allowance Cases in Payment:
May 2002 to Nov 2007**



Latest statistical data available from : <http://www.dwp.gov.uk/asd/tabtool.asp>

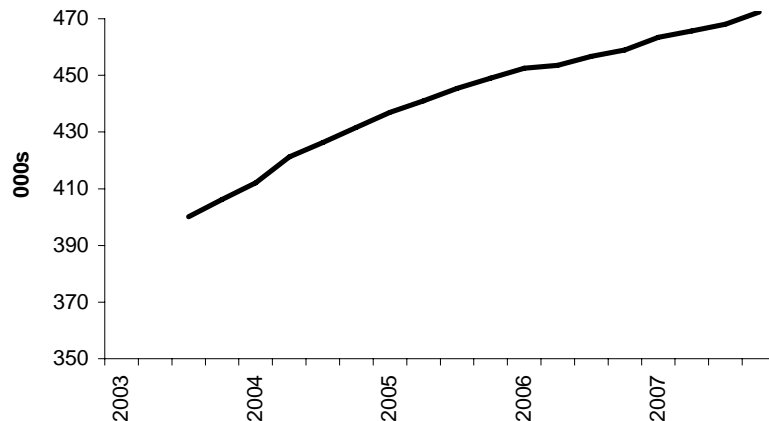
3.3 Carer's Allowance

Carer's Allowance (CA) was introduced on 5 July 1976; it is paid to carers who look after a severely disabled person for at least 35 hours a week. The severely disabled person must be getting either higher or middle rate DLA care component or AA or maximum rate Constant Attendance Allowance with their War Pension or Industrial Injuries Disablement Benefit

At November 2007, there were 472 thousand people receiving Carer's Allowance (not including underlying entitlement cases). 26% of claimants were male, and 74% female.

At November 2007, there were a further 384 thousand people entitled to Carer's Allowance but not receiving any payment due to overlapping benefit provisions (i.e. underlying entitlement cases).

**Carer's Allowance number in payment:
Aug 2003 to Nov 2007**



Latest statistical data available from : <http://www.dwp.gov.uk/asd/tabtool.asp>

Table 3.1 Awards currently in payment for Disability Living Allowance and Carer's Allowance, and Attendance Allowance: November 2002 to November 2007.

	Thousands		
	Disability Living Allowance ¹	Attendance Allowance ²	Carers Allowance ³
Nov-02	2,488.49	1,517.41	..
Feb-03	2,516.13	1,515.24	..
May-03	2,547.09	1,527.99	..
Aug-03	2,573.54	1,547.38	400.18
Nov-03	2,601.88	1,558.19	406.23
Feb-04	2,625.39	1,556.13	412.12
May-04	2,644.28	1,570.34	421.18
Aug-04	2,672.16	1,589.87	426.34
Nov-04	2,696.28	1,600.88	431.66
Feb-05	2,712.91	1,594.79	436.94
May-05	2,729.72	1,605.71	441.03
Aug-05	2,749.48	1,626.72	445.43
Nov-05	2,757.64	1,639.72	*
Feb-06	2,785.68	1,642.09	452.54
May-06	2,799.16	1,646.89	453.54
Aug-06	2,814.29	1,663.57	456.70
Nov-06	2,845.75	1,679.36	458.93
Feb-07	2,860.79	1,674.08	463.50
May-07	2,881.83	1,684.14	464.67
Aug-07	2,909.98	1,699.83	468.06
Nov-07	2,934.44	1,709.99	472.42

Source: DWP, Work & Pensions Longitudinal Study

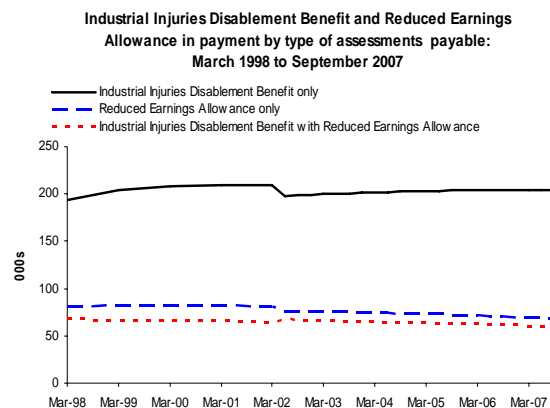
1. Excludes cases entitled but temporarily suspended.
2. Includes cases entitled but temporarily suspended.
3. Excludes cases entitled but not in payment due to overlapping benefits provisions. Data are not available prior to August 2003.

* Figure taken from 100% extract of Carers Allowance Computer System, WPLS figure for this date is under investigation.

3.4 Industrial Injuries Disablement Benefit

Industrial Injuries Disablement Benefit (IIDB) was introduced on 5 July 1948 and is a benefit for people who are disabled because of an industrial accident or prescribed industrial disease. Since 1 October 1986 any claim resulting in an assessment of less than 14% disabled does not normally attract benefit

There were 332 thousand people claiming under the Industrial Injuries Disablement Benefit scheme in September 2007, of whom 61% received Industrial Injuries Disablement Benefit only, 21% received Reduced Earnings Allowance only, and 18% received both. The number of people claiming benefit was 1.2% lower than in Sept 07. The average weekly payment was £44.24.

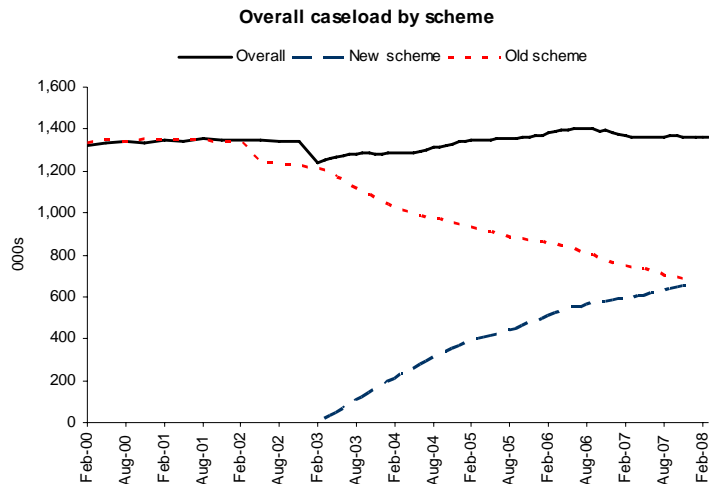


Latest statistical data available from : <http://www.dwp.gov.uk/asd/iidb.asp>

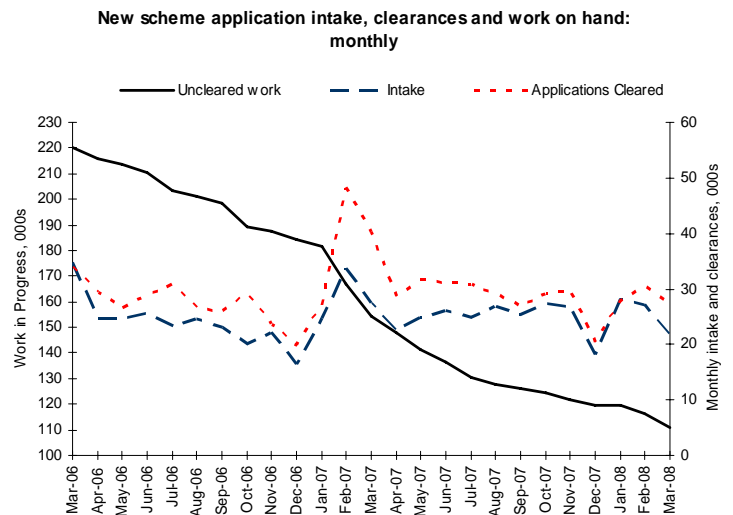
4.1 Child Support Agency cases

Launched on 5 April 1993, the Child Support Agency (CSA) is an executive agency of the Department for Work and Pensions, set up to implement the Child Support Act 1991 and operate the new child maintenance system in Great Britain (there is a separate but parallel agency for Northern Ireland). The CSA is responsible for tracing Non-resident Parents, working out how much maintenance they should pay, and can collect and enforce payments. Prior to 3 March 2003, CSA stored information on the Child Support Computer System (CSCS). Since the introduction of the new computer system (CS2) on that date, all new Child Support applications have been assessed under a new scheme on the new system. The CSA statistics presented here were released on 30 January 2008. These charts reproduce those numbers to provide a complete picture of DWP business.

At the end of March 2008, the CSA caseload stood at 1.4 million, this represents a very small increase since March 2007.



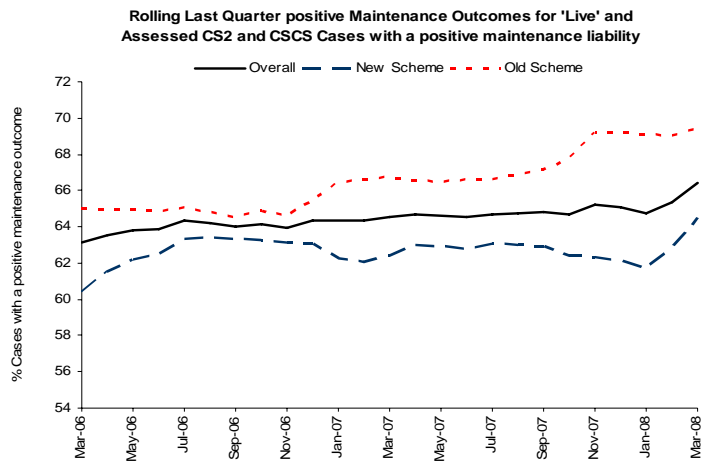
At the end of March 2008, there were 138,000 uncleared applications across both schemes, a fall of 30% over the previous twelve months. The volume of uncleared new scheme applications has fallen by 47,000 since March 2007 and, at 107,000 (including clerical cases) is at its lowest since September 2003. This represents a fall of 30% since March 2007





In the quarter ending March 2008, 67% of all cases (including clerical cases) in which maintenance was due had either received maintenance via the CSA collection service, or had a maintenance direct arrangement in place.

This figure has remained stable in recent months and currently equates to 548,000 cases.



Latest statistical data available from <http://www.dwp.gov.uk/asd/csa.asp>

5. Appeals Service

5.1 Appeals Service lodgements

The Independent Tribunal Service was introduced in 1984 to provide an independent appeals system. It was replaced by the Appeals Service (tAS) in April 2000. From 1st April 2006 the Appeals Service, was renamed as the Social Security and Child Support Appeals Tribunal (SSCSA) and became part of The Tribunals Service (a new Executive agency within the Department for Constitutional Affairs). For operational reasons, the DWP is continuing to produce statistics on its behalf. In a rolling program over 2006, SSCSA has replaced GAPS (the Generic Appeals Processing System) with a new system: GAPS2. The last month for which reliable figures can be produced (under GAPS1) is May 06. It is not yet possible to provide reliable figures for the Statistical Summary under the new system. Therefore no figures are published here. When reliable figures become available the Appeals Section of the Statistical Summary will be resumed.

Latest statistical data available from <http://www.dwp.gov.uk/asd/qat.asp>



NOTES TO EDITORS

1. Modernisation of DWP statistics

The National Statistics paper “DWP statistics transformed: the modernisation of the DWP’s data sources and statistical publications” announced major changes to the National Statistics the Department publishes, both in the data sources employed and the methods of dissemination. The paper is available from http://www.dwp.gov.uk/asd/asd1/stats_consultation/modstats.pdf

2. Links to internet-based statistical tables

For each statistic in this publication, access to more detailed statistics are available by clicking on the web links. For benefit, New Deal and vacancy statistics derived from 100% sources, an internet-based Tabulation Tool is available with the ability for users to define their own statistical queries (available from <http://www.dwp.gov.uk/asd/tabtool.asp>). A similar Tabulation Tool, derived from 5% sample data, is also available. Data on key benefits continue to be available via NOMIS <http://www.nomisweb.co.uk/>. Whenever possible, 100% data should be used in preference to 5% estimates, as these are both more accurate and form DWP’s headline statistics. Some statistics remain outside the scope of the Tabulation Tool but will continue to be available via the internet as pre-defined summary tables

3. Statistical groups

DWP has introduced a new typology to define Statistical Groups within the client group classifications. The aim of the Statistical Group typology is to present each person by the main reasons they are in contact with the Department. Like the client group classification, each client is classified just once, permitting the estimation of the total number of people claiming one or more benefits. The Statistical Group hierarchy is a] Jobseeker b] Incapacity benefits c] Lone parents d] Carers e] Other income-related benefits f] Disabled g] Bereaved h] Housing Benefit i] receiving State Pension only. More information can be found in the National Statistics paper described in paragraph 1 above.

4. Flows on and off benefit

Also available are quarterly figures on flows on and off all the main benefits. These are available via the Tabulation Tool.

5. National Insurance Number Allocations to Overseas Nationals data

We will be publishing quarterly data on allocations of National Insurance numbers to overseas nationals. This is in line with the recommendations from the Inter-Departmental Taskforce on Migration Statistics, and will ensure the information can be considered alongside other relevant statistics on migration and employment. We will announce a date for publication as soon as possible.

6. Other National Statistics issued by the Department for Work and Pensions

Abstract of Statistics for Benefits and Contributions and Indices of Prices and Earnings (annual) – *provides a reference source for those people interested in the main aspects of benefits, contributions and indices of prices and earnings. Latest published figures: http://www.dwp.gov.uk/asd/other_stats.asp*

Appeal Tribunal Statistics (quarterly) – *provides statistics on appeals and decisions. Latest published figures: <http://www.dwp.gov.uk/asd/qat.asp>*

Child Support Agency Quarterly Summary of Statistics – *provides statistics on the Child Support Agency. Latest published figures: <http://www.dwp.gov.uk/asd/csa.asp>*

Contributions and Qualifying Years for Retirement Pension (annual) – *provides statistics on the number of people who have qualified for State Pension.*



Family Resources Survey (annual) - provides information on the incomes and circumstances of private households in the United Kingdom: <http://www.dwp.gov.uk/asd/frs/>

Households Below Average Income (annual) - provides information on potential living standards as determined by disposable income, changes in income patterns over time and income mobility: <http://www.dwp.gov.uk/asd/hbai.asp>

Housing Benefit and Council Tax Benefit Annual Summary of Statistics – provides statistics on Housing Benefit /Council Tax Benefit from a 1 per cent sample of data from Local Authorities. Latest published figures: <http://www.dwp.gov.uk/asd/hbctb.asp>

Housing Benefit and Council Tax Benefit Quarterly Summary of Statistics – provides statistics on Housing Benefit /Council Tax Benefit from quarterly caseload counts. Includes average amounts of benefit. Latest published figures: <http://www.dwp.gov.uk/asd/hbctb.asp>

Housing Benefit and Council Tax Benefit Quarterly Performance Statistics – provides high level statistics on Local Authority processing of Housing Benefit / Council Tax Benefit from quarterly administrative returns. Includes speed of processing new claims and charges of circumstances. Latest published figures: http://www.dwp.gov.uk/asd/asd1/hb_ctb/performance.asp

Housing Benefit Quarterly Fraud Performance Statistics – provides high level statistics on Local Authority fraud performance from quarterly administrative returns. Includes numbers of referrals, investigations actioned and sanctions administered. Latest published figures: http://www.dwp.gov.uk/asd/asd1/hb_ctb/performance.asp

Industrial Injuries Disablement Benefit and Reduced Earnings Allowance Statistics (annual) – provides statistics on current assessments and movements during statistical period.

Industrial Injuries Disablement Benefit Quarterly Summary of Statistics – provides statistics on people in receipt of Industrial Injuries Disablement Benefit, new claims and newly diagnosed prescribed diseases. Latest published figures: <http://www.dwp.gov.uk/asd/iidb.asp>

National Insurance numbers allocated to overseas nationals (Previously migrant workers statistics – quarterly) provides statistics on migrant workers. Latest published figures: http://www.dwp.gov.uk/asd/asd1/niall/nino_allocation.asp

Neighbourhood Statistics – Quarterly ward and Lower Super Outputs Area caseloads for Income Support, Jobseeker's Allowance, Incapacity Benefits, Disability Living Allowance, Attendance Allowance, Pension Credit and State Pension are available from: <http://193.115.152.21/NESS/page1.htm>

Pensioner Income Series (annual) - examines the levels, sources and distribution of pensioners' incomes and the position of pensioners within the population income distribution. Latest published figures: http://www.dwp.gov.uk/asd/asd6/pensioners_income.asp

Second Tier Pension Provision (annual) – contains analysis of contracted out pension schemes. Latest published figures: http://www.dwp.gov.uk/asd/asd1/dsu/second_tier/second_tier.asp

Tax/Benefit Model Tables (annual) – designed to illustrate the weekly financial circumstances of a selection of hypothetical local authority and private tenants. Latest published figures: <http://www.dwp.gov.uk/asd/tbmt.asp>

Work and Pension Statistics (annual) – a summary of all Department for Work and Pensions' National Statistics, covers all benefits and schemes. Also includes take up of benefits and appeals. Latest published figures: <http://www.dwp.gov.uk/asd/wandp.asp>

7. Other statistical outputs issued by the Department for Work and Pensions

Benefit Expenditure Tables - financial year historic information on benefit expenditure and caseloads, along with forecasts are available from <http://www.dwp.gov.uk/asd/asd4/expenditure.asp>