

16 March 2005  
IAD160305SSMar05

Coverage: Great Britain (unless otherwise stated)

Theme: Social and Welfare

**DWP** Department for Work and Pensions

**Issued by:**  
Information Directorate  
Department for Work and Pensions

Telephone :  
Press Office : 020 7238 0866  
Public Enquiries : 020 7712 2171

Website :  
[www.dwp.gov.uk](http://www.dwp.gov.uk)

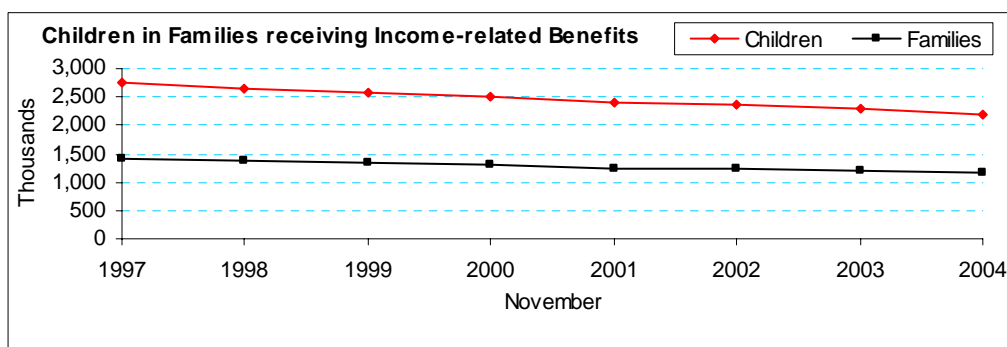
**Statistician:**  
Martin McGill  
Information Directorate  
Department for Work and Pensions  
BP 5201  
Benton Park View  
Benton Park Road  
Longbenton  
NEWCASTLE UPON TYNE  
NE98 1YX

Telephone : 0191 225 7661  
Facsimile : 0191 225 3193  
email :  
[martin.mcgill@dwp.gsi.gov.uk](mailto:martin.mcgill@dwp.gsi.gov.uk)

**Next Publication:**  
15 June 2005

## DWP STATISTICAL SUMMARY – MARCH 2005

### Client Group Analysis:- Families with Children:

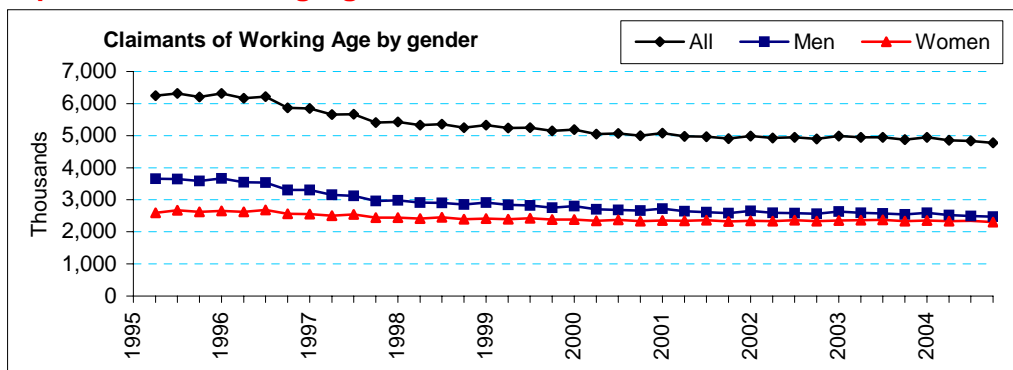


At November, 2004:

- 2.7 million children (21 per cent of the total population of children aged under 16 and young adults aged 16 to 18 in full-time education), were living in families claiming a key benefit and receiving additional amounts of benefit and/or CTC for them.
- 66 per cent of them had been on benefit for at least two years.

Latest published figures: <http://www.dwp.gov.uk/asd/cga.asp>

### Population of Working Age:

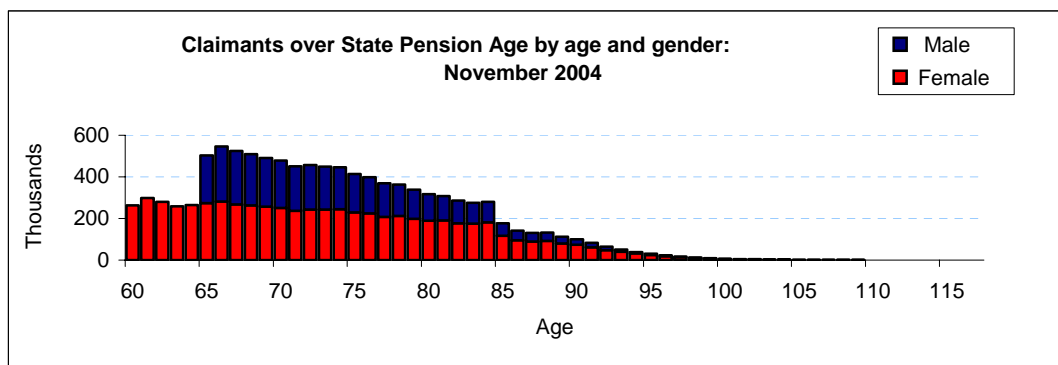


At November 2004:

- 4.78 million people of working age (13.4 per cent) were claiming a key benefit.
- 48 per cent of claimants were women.

Latest published figures: <http://www.dwp.gov.uk/asd/cga.asp>

### Population over State Pension Age:



At November 2004:

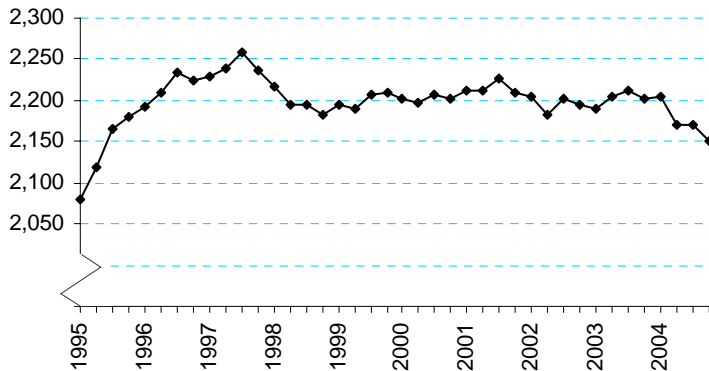
- Just over 10.7 million (99.9 per cent) people over State Pension age were claiming a key benefit.
- 37 per cent of claimants were men.

Latest published figures: <http://www.dwp.gov.uk/asd/cga.asp>

## Individual Benefits:-

### Income Support – Aged Under 60

Number of recipients (000s)



At 28<sup>th</sup> November 2004:

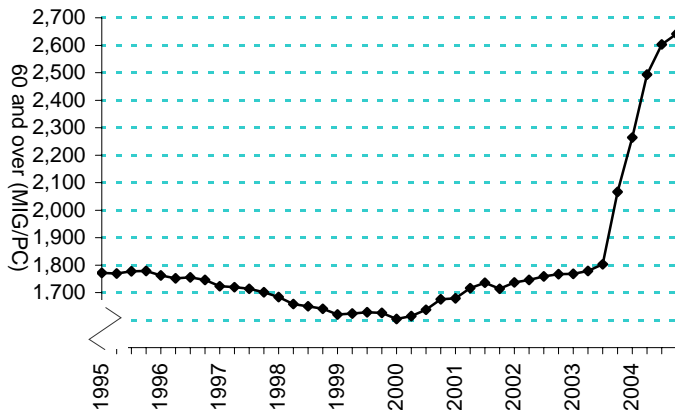
- All claimants: 2.2 million (£88 per week)
- Lone parents (excluding the disabled) represent 36 per cent of the IS caseload – 782 thousand (£107 per week).
- Disabled recipients represent 52 per cent of the caseload – 1,125 thousand (£81 per week)
- Almost two thirds of recipients are women.
- Pension Credit (PC) replaced the Minimum Income Guarantee (MIG) in Income Support on 6<sup>th</sup> October 2003.

Latest published figures:

<http://www.dwp.gov.uk/asd/isqse.asp>

### Aged 60 and over - Pension Credit/Minimum Income Guarantee:

Number of recipients (000s)



At 28<sup>th</sup> November 2004:

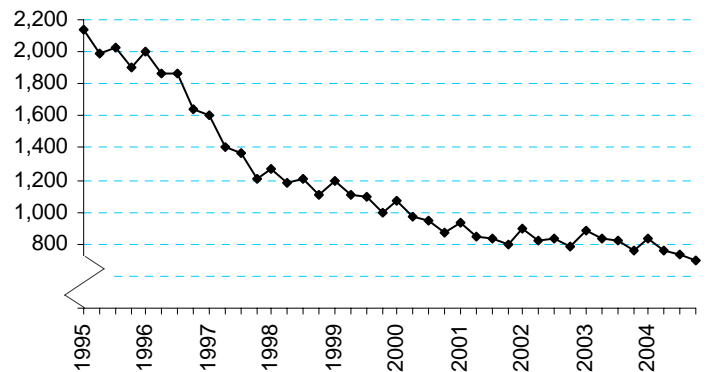
- From 6<sup>th</sup> October 2003 Pension Credit (PC) replaced the Minimum Income Guarantee (MIG).
- PC caseload: 2.6 million compared to 1.8 million MIG at Aug 2003.
- PC average amounts (£42 per week). Care should be taken when comparing PC amounts to MIG amounts because of other changes that were introduced on 6<sup>th</sup> October 2003.

Latest published figures:

<http://www.dwp.gov.uk/asd/pcqse.asp>

### Jobseeker's Allowance (not seasonally adjusted):

Number of recipients (000s)



At 11<sup>th</sup> November 2004:

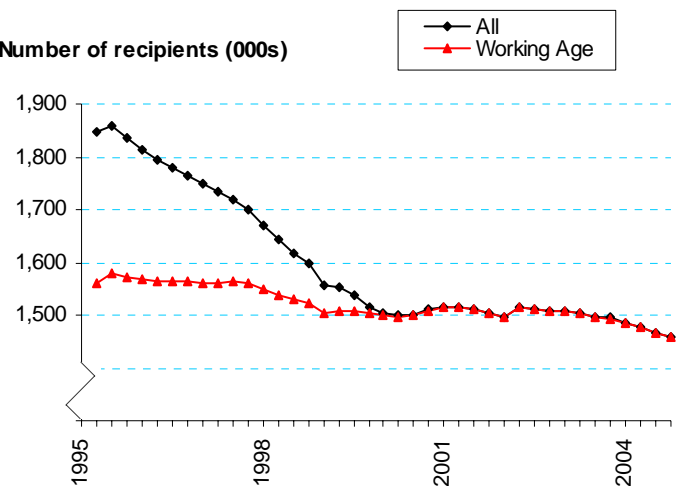
- Total claimants: 775 thousand.
- Total recipients: 699 thousand, 130 thousand with only contribution-based JSA, 569 thousand with income-based JSA (including 13 thousand with underlying entitlement to contribution-based benefit).
- Average weekly entitlement: £58 income-based, £53 contribution-based.
- Just over a quarter of claimants are women.

Latest published figures:

[http://www.dwp.gov.uk/asd/jsa\\_qse.asp](http://www.dwp.gov.uk/asd/jsa_qse.asp)

### Incapacity Benefit:

Number of recipients (000s)



At 30<sup>th</sup> November 2004:

- Total claimants: 2.4 million.
- Total recipients: 1.5 million.
- Average amount: £84 per week.
- Almost two-thirds of recipients are men

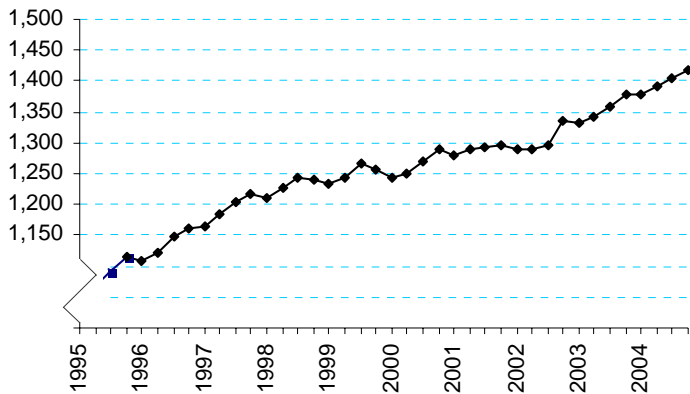
Note: People in receipt of Invalidity Benefit who reached State Pension age before 13 April 1995 were able to get Incapacity Benefit for up to five years beyond pension age. As of May 2000 the entitlement of all these cases should have ceased. The short term rate is payable for people over pension age for up to a year, but only if incapacity began before they reached state pension age.

Latest published figures:

[http://www.dwp.gov.uk/asd/ib\\_sda.asp](http://www.dwp.gov.uk/asd/ib_sda.asp)

## Attendance Allowance:

Allowances in payment (000s)



At 30<sup>th</sup> November 2004:

- Total recipients: 1.4 million of whom 725 thousand receive the higher rate and 694 thousand the lower.
- Average amount: £49 per week.
- 70 per cent of recipients were women.

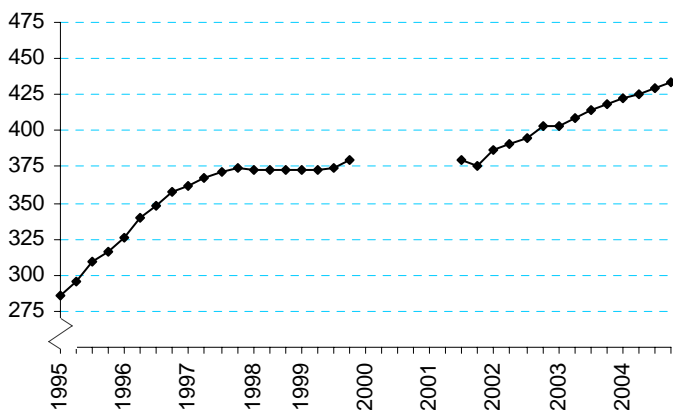
Note: Prior to the fourth quarter of 1995, Attendance Allowance caseload figures were collected annually and thereafter quarterly.

Latest published figures:

<http://www.dwp.gov.uk/asd/dcm.asp>

## Carer's Allowance:

Allowances in payment (000s)



At 30<sup>th</sup> November 2004:

- Total entitled: 691 thousand of whom 433 thousand are in payment.
- Average amount: £45.54 per week. (provisional)
- 75 per cent of recipients were women.

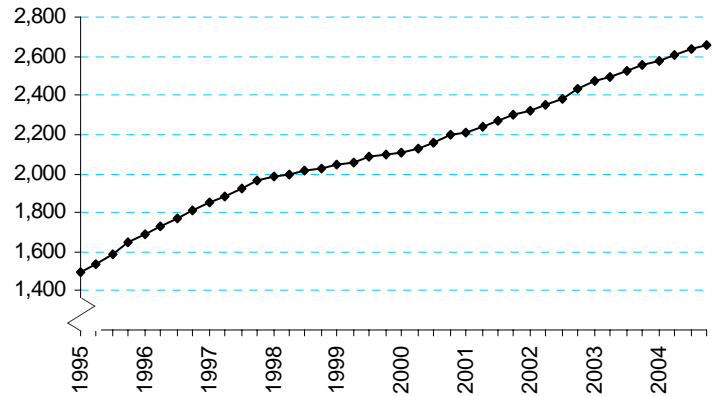
Note: figures are estimated for 1996. Estimated figures for 2000 have been excluded. March and June 2001 figures are not available.

Latest published figures:

<http://www.dwp.gov.uk/asd/dcm.asp>

## Disability Living Allowance:

Number of recipients (000s)



At 30<sup>th</sup> November 2004:

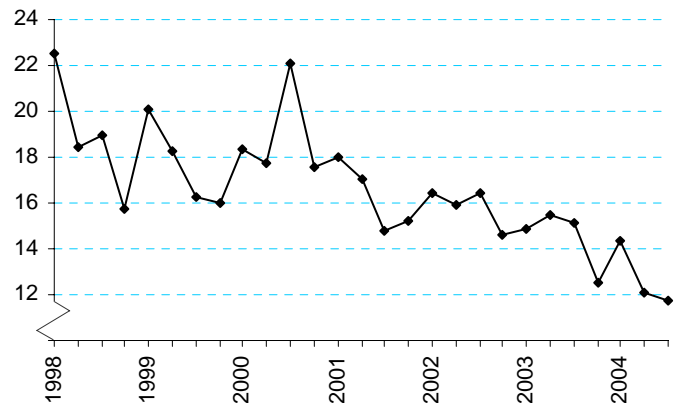
- Total recipients: 2.7 million.
- Average amount: £58 per week.
- 559 thousand received only the mobility component, 355 thousand received only the care component and 1.7 million received both mobility and care components
- 50% of recipients are women.

Latest published figures:

<http://www.dwp.gov.uk/asd/dcm.asp>

## Industrial Injuries Disablement Benefit:

Number of new claims (Accidents and Prescribed Diseases) (000s)



At 30<sup>th</sup> September 2004:

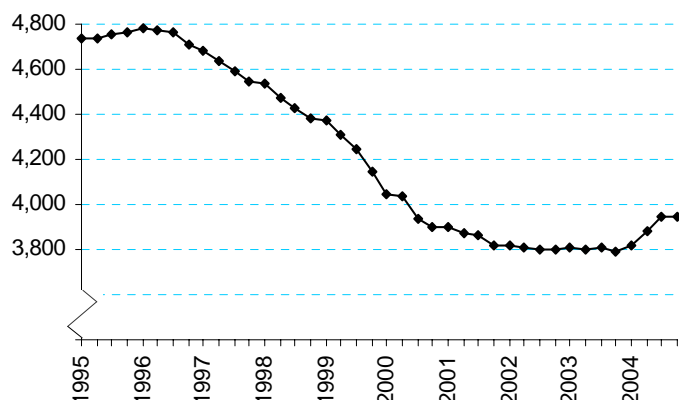
- New Claims in the quarter (Accidents and Prescribed Diseases): 11.7 thousand.
- 16 per cent of these new claims were from women.
- New claims in the quarter (Reduced Earnings Allowance): 0.6 thousand.
- Total people in payment (Industrial Injuries Disablement Benefit and Reduced Earnings Allowance): 340.7 thousand (£42 per week).

Latest published figures:

<http://www.dwp.gov.uk/asd/iidb.asp>

## Housing Benefit:

Number of recipients (000s)



At 12<sup>th</sup> November 2004:

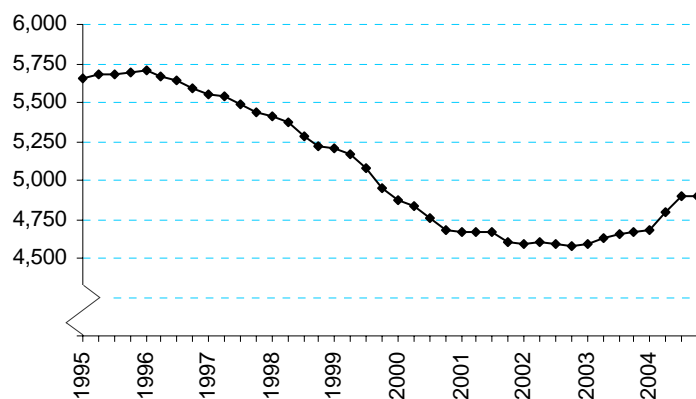
- Total recipients: 3.9 million.
- Average weekly amount: £61
- Total recipients (aged over 60): 1.6 million (at May 2003)
- Total recipients (with dependants): 1.2 million (at May 2003).
- 73 per cent of HB recipients are also in receipt of IS, PC (GC element) or JSA (income based)

Latest published figures:

<http://www.dwp.gov.uk/asd/hbctb.asp>

## Council Tax Benefit:

Number of recipients (000s)



At 12<sup>th</sup> November 2004:

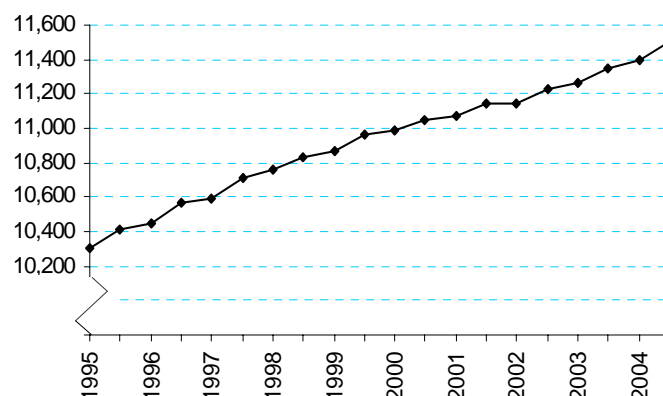
- Total recipients: 4.9 million (excludes second adult rebates).
- Average weekly amount: £13
- Total recipients (aged over 60): 2.4 million (at May 2003)
- Total recipients (with dependants): 1.2 million (at May 2003).
- 71 per cent of CTB recipients are also in receipt of IS, PC (GC element) or JSA (income based).

Latest published figures:

<http://www.dwp.gov.uk/asd/hbctb.asp>

## State Pension:

Number of recipients (000s)



At 30<sup>th</sup> September, 2004:

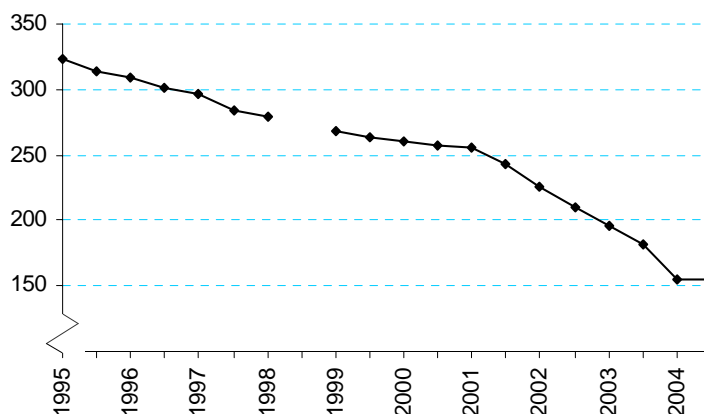
- Total recipients: 11.5 million, of whom 1 million reside overseas.
- Average amount of entitlement to State Pension:  
All pensioners: £81 per week.  
Men: £98 per week.  
Women: £71 per week.
- 63 per cent of recipients are women.

Latest published figures:

<http://www.dwp.gov.uk/asd/sossp.asp>

## Widow's Benefits:

Number of recipients (000s)



At 30<sup>th</sup> September, 2004:

- Total recipients: 154.8 thousand.
- Average amount of entitlement: £77 per week.
- All recipients are women.

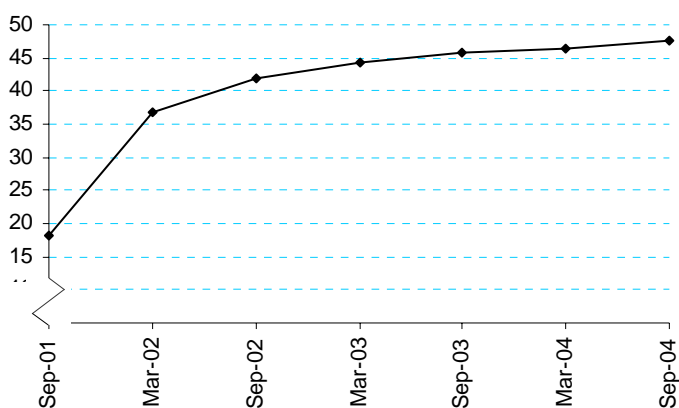
Note: figures for Sept 1998 are not available. Bereavement Benefit replaced Widow's Benefit in April 2001. These figures exclude Widow's Payment.

Latest published figures:

<http://www.dwp.gov.uk/asd/workingage.asp>

## Bereavement Benefits:

Number of recipients (000s)



At 30<sup>th</sup> September, 2004:

- Total recipients: 47.6 thousand
- Average amount of entitlement: £84 per week.
- 70% of recipients are women.

Note: These figures exclude Bereavement Payment

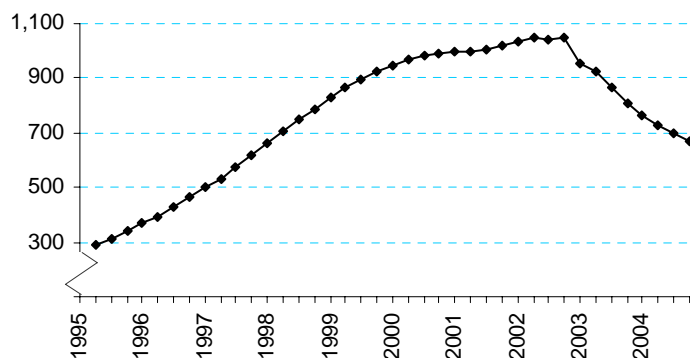
Latest published figures:

<http://www.dwp.gov.uk/asd/workingage.asp>

## DWP Agencies:-

### Child Support Agency:

Number of 'Live' and fully assessed cases on old Child Support Computer System (CSCS) (000s)



At 30<sup>th</sup> November 2004:

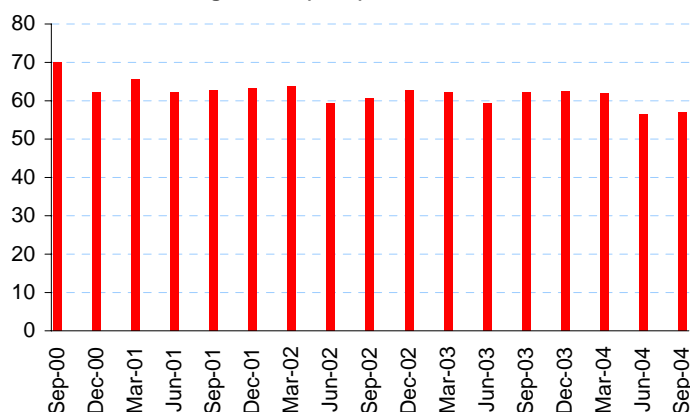
- As previously acknowledged, IT difficulties with the new computer system have impacted on the quality of management information on the new scheme. The Agency is currently revisiting its statistical data. We expect to include new scheme figures in our next publication.
- There are up to 200 thousand cases assessed under old rules that are currently administered on the new IT system. These cases are not included in this section.
- Total 'live' and fully assessed cases on the "old" system: 668.2 thousand.

Latest published figures:

<http://www.dwp.gov.uk/asd/csa.asp>

## The Appeals Service:

Number of new lodgements (000s)



Quarter ending 30<sup>th</sup> September 2004:

- Number of new lodgements: 56.9 thousand.
- Total number of appeals cleared at hearings: 43.6 thousand. Of these, 19.4 thousand (44.5 per cent) were found in favour of the appellant.
- 52.3 per cent of appeals heard at oral hearings were found in the appellant's favour.
- 22.7 per cent of appeals heard at paper hearings were found in the appellant's favour.

Latest published figures:

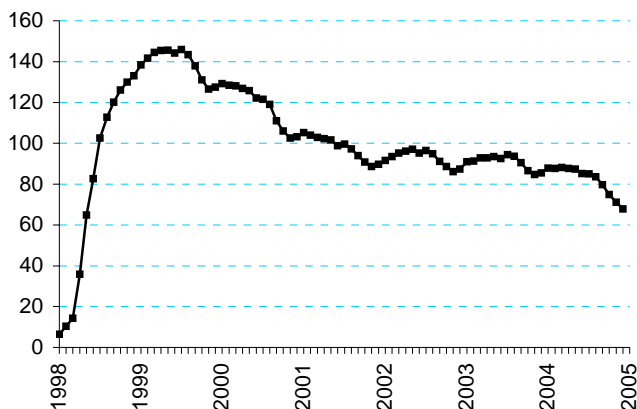
<http://www.dwp.gov.uk/asd/qat.asp>

## Employment Programmes:-

### New Deal for Young People:

Improvements to the methods for compiling New Deal statistics have led to revisions for this release. Please refer to webpage below for full details

Number of participants (000s)



By end of December 2004:

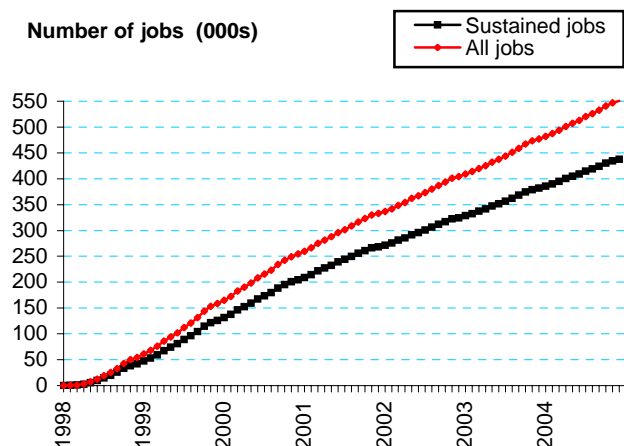
- Almost 1.2 million completed spells on New Deal by the end of December 2004; there have been 1.25 million starts and 1.19 million leavers. At the end of December 2004, there were 67.8 thousand current participants.
- Of the leavers, 38 per cent have entered sustained unsubsidised jobs, 11 per cent have transferred to other benefits, 20 per cent have left for other known reasons, and 31 per cent for unknown reasons.

Latest published figures:

<http://www.dwp.gov.uk/asd/ndyp.asp>

### Young People into Employment:

Number of jobs (000s)



By end of December 2004:

- 550.8 thousand young people in jobs to the end of December 2004. Of which, 437.8 thousand were sustained jobs, and 113.0 thousand were jobs lasting less than 13 weeks.

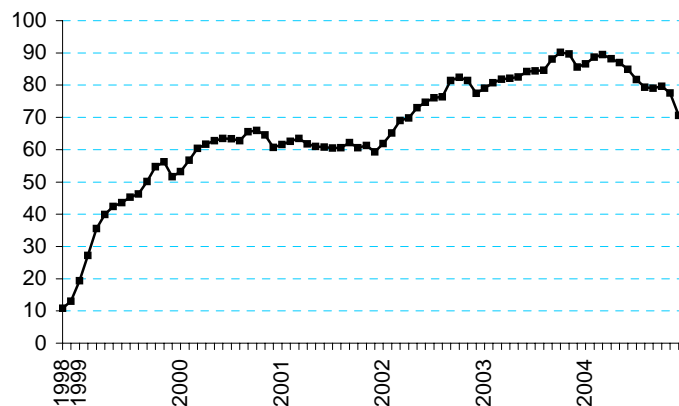
Latest published figures:

<http://www.dwp.gov.uk/asd/ndyp.asp>

### New Deal for Lone Parents:

Improvements to the methods for compiling New Deal statistics have led to revisions for this release. Please refer to webpage below for full details

Number of participants (000s)



By end of December 2004:

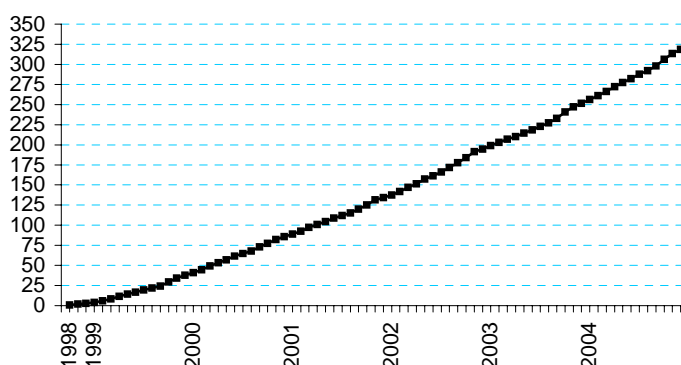
- Starts on the NDLP caseload reached 769.4 thousand at the end of December 2004, an increase of 44.1 thousand on September 2004.
- A total of 698.8 thousand leavers from NDLP by end of December 2004.
- 70.8 thousand lone parents were participating on NDLP at end of December 2004.

Latest published figures:

<http://www.dwp.gov.uk/asd/ndlp.asp>

### Lone Parents into Employment:

Number of jobs (000s)



By end of December 2004:

- 365.4 thousand jobs gained by participants on New Deal for Lone Parents, with 318.6 thousand individual lone parents gaining a job.

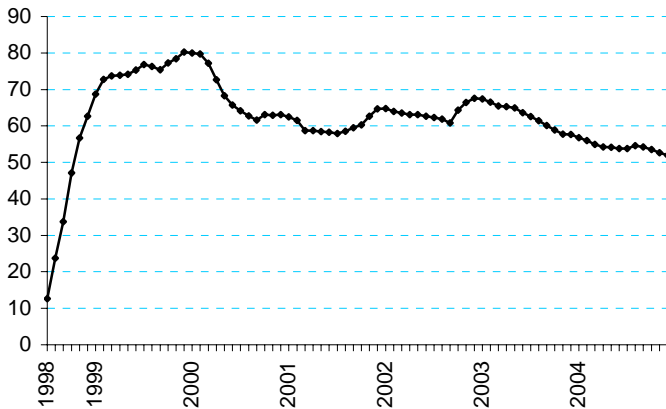
Latest published figures:

<http://www.dwp.gov.uk/asd/ndlp.asp>

## New Deal for Long Term Unemployed People aged 25+:

Improvements to the methods for compiling New Deal statistics have led to revisions for this release. Please refer to webpage below for full details

Number of participants (000s)



By end of December 2004:

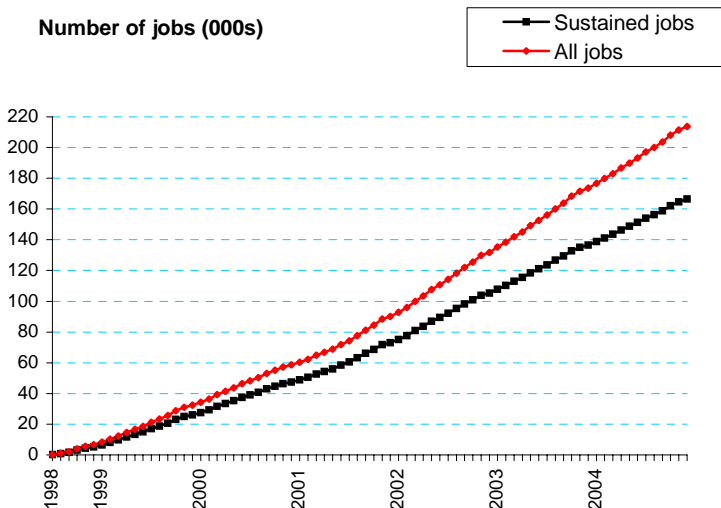
- 762.6 thousand starts on New Deal by the end of December 2004 – 717.9 thousand have left. A total of 51.8 thousand were participating on the New Deal 25plus at the end of December 2004.

Latest published figures:

<http://www.dwp.gov.uk/asd/ndyp.asp>

## Long Term Unemployed People aged 25+ into Employment:

Number of jobs (000s)



By end of December 2004:

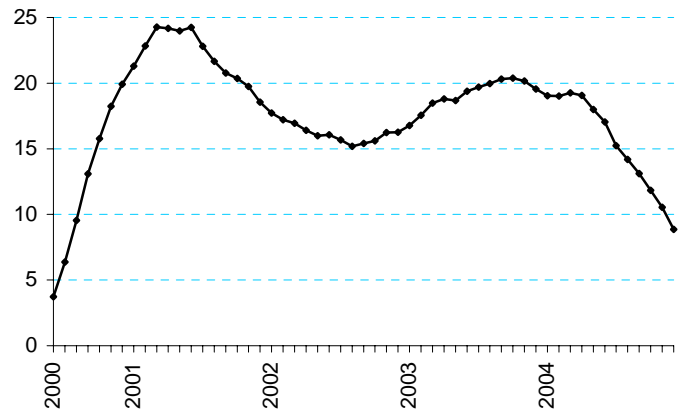
- 213.7 thousand people on New Deal into jobs to the end of December 2004. Of which, 166.5 thousand were sustained jobs, and 47.2 thousand were jobs lasting less than 13 weeks.

Latest published figures:

<http://www.dwp.gov.uk/asd/ndyp.asp>

## Employment Zones:

Number of participants aged 25+(000s)



from July 2001 figures include people returning to Employment Zones for a second time

By the end of December 2004:

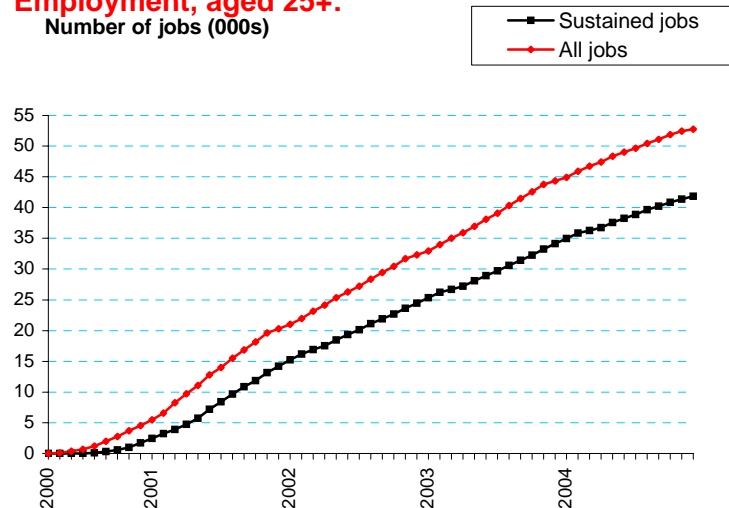
- 137.4 thousand starts amongst people aged 25+ (of which 99.1 were first time entrants). There had been a total of 5.4 thousand starts amongst people aged 18 to 24, and 4.4 thousand starts amongst lone parents.
- At end of December 2004, there were 8.9 thousand people aged 25 plus, 1.2 thousand people aged 18-24, and 0.8 thousand lone parents participating on an Employment Zone.

Latest published figures:

[http://www.dwp.gov.uk/asd/emp\\_zones/emp\\_zones.asp](http://www.dwp.gov.uk/asd/emp_zones/emp_zones.asp)

## Employment Zone Participants into Employment, aged 25+:

Number of jobs (000s)



By end of December 2004:

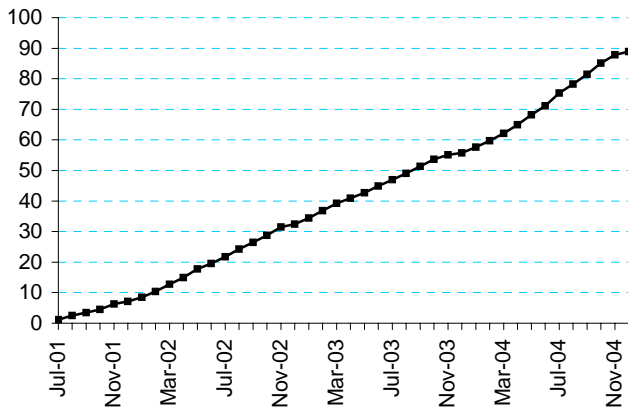
- 52.8 thousand Employment Zone participants aged 25 and over entered employment by December 2004.
- 41.8 thousand Employment Zone participants aged 25 and over had been employed for 13 weeks or more by the end of December 2004
- 2.0 thousand people aged 18-24 and 1.3 thousand lone parents have entered employment.

Latest published figures:

[http://www.dwp.gov.uk/asd/emp\\_zones/emp\\_zones.asp](http://www.dwp.gov.uk/asd/emp_zones/emp_zones.asp)

## New Deal for Disabled People:

Number of participants (000s)



By end of December 2004:

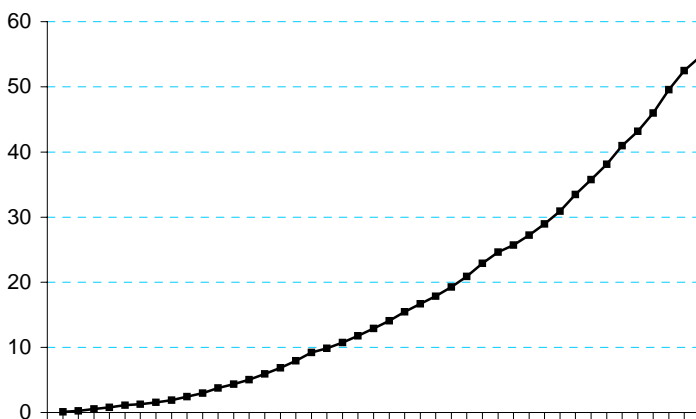
- 131.1 thousand starts to NDDP, of which 63 per cent were male, and 37 per cent were female.
- 88.9 thousand current participants, of which 72 per cent were aged 35 and over

Latest published figures:

<http://www.dwp.gov.uk/asd/nddp.asp>

## New Deal for Disabled into Employment:

Number of jobs (000s)



By end of December 2004:

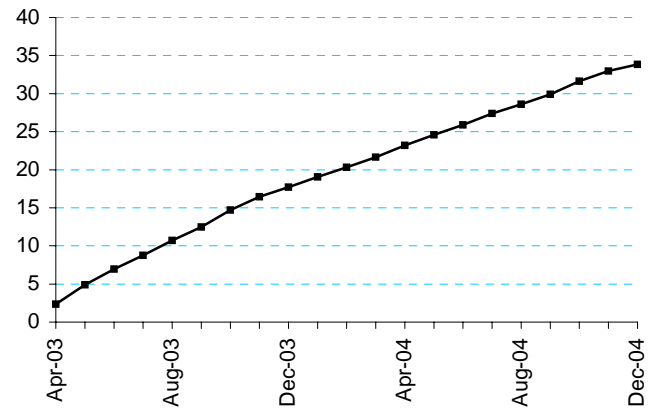
- 65.4 thousand jobs through NDDP, amongst 54.6 thousand individuals.

Latest published figures:

<http://www.dwp.gov.uk/asd/nddp.asp>

## New Deal 50+:

People gaining a job (000s)



Between April 2003 and end of December 2004:

- 33.9 thousand people gaining a job through ND50+ since April 2003, of which, 73 per cent are male, 79 per cent are White, and 52 per cent are aged 50-54.

Up to March 2003:

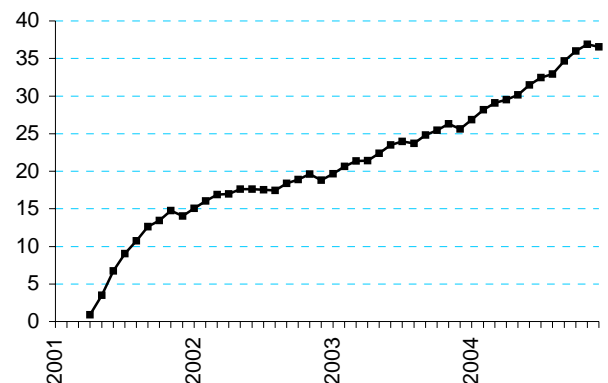
- 98.0 thousand Employment Credit starts on ND50+ between April 2000 and March 2003.

Latest published figures:

<http://www.dwp.gov.uk/asd/ndfifty.asp>

## Work Based Learning for Adults:

Number of participants in England (000s)



By end of December 2004:

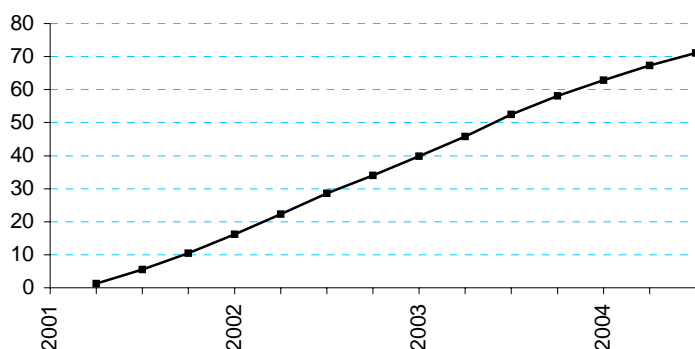
- 312,500 starts to Work Based Learning for Adults of which 276,000 have left, leaving 36,500 participants.
- Of the leavers, 41% have gained a job within 13 weeks of leaving

Latest published figures:

<http://www.dwp.gov.uk/asd/wbla.asp>

## Work Based Learning for Adults into Employment:

Number of jobs in England (000s)



By the end of September 2004:

- 71,100 people into jobs from Work Based Learning for Adults. Of these, 10,900 people gained jobs from Basic Employability Training, 20,400 from Short Job Focused Training, 25,200 from Longer Occupational Training, and 14,500 from Self Employment

Latest published figures:

<http://www.dwp.gov.uk/asd/wbla.asp>

### Notes to Editors

#### Developments

New Deal 50+ statistics are published for the first time with this release.

We hope to release the latest annual Neighbourhood Statistics relating to August 2004, in the week commencing 21st March 2005.

New National Statistics on JSA Sanctions and Disallowances will be published in the next quarterly release on 15 June 2005. The statistics are available on request starting in April 2005. Further information is available from Karen Grierson, tel 0114 209 8283, email [karen.grierson@dwp.gsi.gov.uk](mailto:karen.grierson@dwp.gsi.gov.uk).

The Nomis website ([www.nomisweb.co.uk](http://www.nomisweb.co.uk)) gives access to official labour market statistics, especially concentrating on local areas. It holds data such as Claimant Count, Census, Labour Force Survey and vacancy statistics. Tabulations of key DWP benefit series are now available on Nomis. More series will become available in the months ahead.

In July 2004 the DWP completed a consultation exercise with the customers of National Statistics publications about modernising these outputs. The proposals included the use of a new data source: the Work and Pensions Longitudinal Study, and making our statistical information available more flexibly via the internet. A detailed response to the points arising from the consultation has been published on the DWP Internet.

#### Background

The DWP Statistical Summary is a National Statistics publication and is produced to the high professional standards outlined in the National Statistics Code of Practice. National Statistics publications undergo regular quality assurance reviews to ensure that they meet customer needs. They are produced free from any political interference.

The purpose of the DWP Statistical Summary is to provide an up-to-date overview of the most important benefits, schemes, agencies and associated bodies administered by the DWP in a concise format. Users seeking more detailed information are directed to the web pages listed or to the contact point on the front page. The Department's web pages provide easy and convenient access to the latest information about a wide range of DWP responsibility.

- From June 2003, the Department released most of its statistics on the same day. All tables previously published within individual benefit publications are now available on the Department's Internet site at:

<http://www.dwp.gov.uk/asd/statistics.asp>.

Figures in this, and future DWP publications are affected by the introduction of Child Tax Credit (CTC) in April 2003. The main changes are:

- Child dependency increases paid with non-income related benefits were abolished for new claims to State Pension, Bereavement Benefit, Incapacity Benefit and Carer's Allowance from April 2003.
- From April 2004, CTC replaced the child elements of Income Support (IS) and income-based Jobseeker's Allowance (JSA(IB)).

Dates when there may be particular changes in the figures are:

- April 2003, when Child dependency increases paid with non-income related benefits were abolished for new claims.
- October 2003, when families on Minimum Income Guarantee (MIG) with children had child elements migrated to CTC.
- Financial year 2004/05, when families on Income Support and income-based Jobseeker's Allowance will have child elements migrated to CTC.

A small number of IS/ JSA(IB) recipients will no longer be eligible once CTC is in payment. This is because CTC payments will raise total income above the IS/JSA(IB) threshold, or other income exceeds the threshold once child allowances are removed. We therefore advise that customers exercise caution when performing year on year comparisons, or when comparing with the previous quarter.

Additional financial year benefit expenditure information is available in the Department for Work and Pensions Departmental Report 2004 (<http://www.dwp.gov.uk/publications/dwp/2004.foreword/home.asp>).

The average weekly amounts and caseloads in this summary are derived from administrative data which have been validated, cleaned and published by DWP. Many of these statistics are calculated from samples drawn at particular points in time and are therefore subject to some sampling variability. The figures have not been seasonally adjusted. Average amounts are rounded to the nearest pound.

### ***A brief description of the analyses included in this publication:***

**Client Group Analysis (Families with Children)** *combines data collected for Jobseeker's Allowance, Income Support, Disability Living Allowance, Incapacity Benefit and Severe Disablement Allowance on children / young adult dependants for whom additional benefit and/or Child Tax Credit is payable.*

**Client Group Analysis (Working Age)** *combines data collected for Jobseeker's Allowance, Incapacity Benefit, Severe Disablement Allowance, Disability Living Allowance and Income Support.*

**Client Group Analysis (Over State Pension Age)** *combines data for Attendance Allowance, Disability Living Allowance, Incapacity Benefit, Income Support, State Pension and Severe Disablement Allowance.*

**Income Support (IS)** *was introduced on April 11th, 1988 and is an income related benefit that can be claimed by people normally aged 18 or over that work less than 16 hours a week and have insufficient income to meet their needs. Additional help is available for partners and children of claimants*

**Pension Credit (PC)** *was introduced on October 6th, 2003 and replaced the Minimum Income Guarantee (MIG). For people age 60 or over, Pension Credit will guarantee an income at a set level. People age 65 or over (and couples where one member is 65 or over) may be entitled to a savings credit. This will reward pensioners who have modest income or savings.*

**Jobseeker's Allowance (JSA)** *was introduced on October 7th, 1996 and is a contributory or income related benefit paid to people under State Pension age who are available for and actively seeking work of at least forty hours per week. They agree with Jobcentre Plus any restrictions on their availability for work and the steps they intend to take in order to find work. Additional help is available for partners and children of claimants.*

**Incapacity Benefit (IB)** *was introduced on April 13th, 1995 and is paid to people who are incapable of work and who have paid sufficient contributions throughout their working life.*

**Attendance Allowance (AA)** *was introduced on December 6th, 1971 and is a benefit for people over the age of 65 who are so severely disabled, physically or mentally, that they need a great deal of help with personal care or supervision. This assistance could be required during the day or at night. Those requiring constant help receive the higher rate of benefit.*

**Disability Living Allowance (DLA)** *was introduced on April 1st, 1992 and is a benefit for people who have become disabled before the age of 65 and who need assistance with personal care or mobility.*

**Carer's Allowance** *(formerly Invalid Care Allowance) was introduced on 5th July 1976, it is paid to someone who looks after a severely disabled person for at least 35 hours a week. The severely disabled person must be getting either higher or middle rate DLA care component or AA or constant AA at the maximum rate under War Pensions or Industrial Injuries Scheme.*

**Industrial Injuries Disablement Benefit (IIDB)** *was introduced on July 5, 1948 and is a benefit for people who are disabled because of an industrial accident or prescribed industrial disease. Since October 1, 1986 any claim resulting in an*

assessment of less than 14% disabled does not normally attract benefit, unless the disability is caused by pneumoconiosis, byssinosis, or diffuse mesothelioma. A customer can claim benefit for more than one industrial accident or prescribed disease.

**Housing Benefit (HB)** was introduced on April 1st, 1983 and is an income related benefit designed to help people on low incomes pay for rented accommodation whether in or out of work.

**Council Tax Benefit (CTB)** was introduced on April 1st, 1993 and is an income related benefit, calculated in a similar way to Housing Benefit, which has been designed to help people on low incomes pay their council tax.

**Child Support Agency (CSA)** was introduced on April 5th, 1993 and is responsible for tracing Non-Resident Parents (NRPs) and working out how much maintenance they should pay. The CSA can collect and enforce maintenance assessments.

**State Pension (SP)** was introduced on January 1st, 1909 and is paid to people who have reached the state pension age (65 for men, 60 for women) and who fulfil the residency and contributions conditions.

**Widow's Benefit (WB):** Introduced on 6 July 1948, payable to women widowed on or after 11 April 1988 and up to and including 8 April 2001. There are three types of widow's benefits: Widow's Payment, Widowed Mother's Allowance and Widow's Pension. Women widowed before 11 April 1988 continue to receive Widow's Benefit based on the rules that existed before that date.

**The Appeals Service (tAS)** The Independent Tribunal Service was introduced in 1984 to provide an independent appeals system. It was replaced by the Appeals Service in April 2000.

**Bereavement Benefit (BB):** Introduced on 9 April 2001 as a replacement to Widows Benefit, payable to both men and women widowed on or after 9 April 2001. There are three types of Bereavement Benefits available: Bereavement Payment, Widowed Parent's Allowance and Bereavement Allowance.

**New Deal for Young People** Those aged 18-24 who have been claiming JSA continuously for 6 months become eligible for New Deal when they reach the 6-month threshold. Those joining New Deal first enter a Gateway period lasting up to 4 months, during which Jobcentre Plus and their partners will work with them to improve their employability, and to find unsubsidised jobs for as many as possible.

**New Deal for Lone Parents** is available to all lone parents on Income Support on a voluntary basis, but originally only those lone parents with a youngest child of school age (5 years and 3 months) were sent an invitation letter explaining what the service could offer. Following the initial adviser interview, lone parents may either agree or decline to join the NDLP caseload. Whilst on the caseload participants will receive a package of support and guidance to help them into jobs.

**New Deal 25plus** Those aged 25 and over who have been claiming JSA for 18 months out of the last 21 months become eligible for New Deal when they reach this threshold. Those joining New Deal first enter a flexible Gateway period lasting up to four months where provision and level of help will be tailored to the needs of the individual.

**New Deal for Disabled People** supports people in receipt of a disability or health-related benefit in finding and retaining paid employment. It is a voluntary programme delivered through a network of Job Brokers across England, Scotland and Wales.

**Employment Zones** Employment Zones pool funds for training, Jobcentre Plus support and the equivalent of benefit to maximise flexibility and give individuals more say in the choices which affect them. The aim is to get people into jobs and keep them in work. Employment Zones were set up in April 2000 in areas of persistently high unemployment. They are a mandatory programme for participants receiving Income-Based Jobseeker's Allowance who have been unemployed for a period of 18 months out of the last 21 months. From October 27 2003 (in single provider zones), Zone participation has been extended to people aged 18-24 who have been claiming JSA for 6 months and who had previously participated on NDYP. In addition, lone parents are now also able to access Zone provision on a voluntary basis (except for Zones in London).

**New Deal 50+** is a voluntary programme for people aged 50 or over who are in receipt of any one or more of the following benefits for at least 6 months: Income Support (IS), Jobseeker's Allowance (JSA), Incapacity Benefit (IB), Severe Disablement Allowance (SDA), and Pension Credit.

**Work Based Learning for Adults** Work Based Learning for Adults is a voluntary programme mainly aimed at people aged 25 and over who have been unemployed for 6 months or longer and are claiming Jobseeker's Allowance or other qualifying benefit. Day one entry is available to a range of people at particular disadvantage in the labour market and support is also offered under some circumstances to those with an employment status. The figures presented here relate to England only.

## **National Statistics issued by the Department for Work and Pensions:**

**Abstract of Statistics for Benefits and Contributions and Indices of Prices and Earnings (annual)** – provides a reference source for those people interested in the main aspects of benefits, contributions and indices of prices and earnings. Latest published figures: [http://www.dwp.gov.uk/asd/other\\_stats.asp](http://www.dwp.gov.uk/asd/other_stats.asp)

**Appeal Tribunal Statistics (quarterly)** – provides statistics on appeals and decisions. Latest published figures: <http://www.dwp.gov.uk/asd/qat.asp>

**Bereavement Benefit and Widow's Benefit Statistics (six monthly)** – provides statistics on Bereavement Benefit and Widow's Benefit. Latest published figures: <http://www.dwp.gov.uk/asd/workingage.asp>

**Child Support Agency Quarterly Summary of Statistics** – provides statistics on the Child Support Agency. Latest published figures: <http://www.dwp.gov.uk/asd/csa.asp>

**Contributions and Qualifying Years for Retirement Pension (annual)** – provides statistics on the number of people who have qualified for State Pension.

**Client Group Analysis: Quarterly Bulletin on Families with Children on Key Benefits** - uses existing data to give a more coherent picture for those families with children on key benefits in Great Britain. Includes statistics on Maternity Allowance. Latest published figures: <http://www.dwp.gov.uk/asd/cga.asp>

**Client Group Analysis: Quarterly Bulletin on the Population of Working Age on Key Benefits** – uses existing data to give a more coherent picture for those of working age on key benefits in Great Britain. Latest published figures: <http://www.dwp.gov.uk/asd/cga.asp>

**Client Group Analysis: Bulletin on the Population over State Pension age (six monthly)** – uses existing data to give a more coherent picture for those of over state pension age on key benefits in Great Britain. Latest published figures: <http://www.dwp.gov.uk/asd/cga.asp>

**Disability Living Allowance, Attendance Allowance and Carer's Allowance Statistics (quarterly)** – provides statistics on Disability Living Allowance, Attendance Allowance and Carer's Allowance. Latest published figures: <http://www.dwp.gov.uk/asd/dcm.asp>

**Employment Zones (six-monthly)** - contains information on the number of Employment Zone starters and participants, the characteristics of entrants, those sustaining 13 weeks in employment and those returning to Employment Zones for a second time; together with information on numbers into employment. Latest published figures: [http://www.dwp.gov.uk/asd/emp\\_zones/emp\\_zones.asp](http://www.dwp.gov.uk/asd/emp_zones/emp_zones.asp)

**Family Resources Survey (annual)** – provides characteristics of individuals at various positions in the income distribution. Latest published figures: <http://www.dwp.gov.uk/asd/frs/>

**Fraud and Error in Claims for Income Support and Jobseeker's Allowance (six monthly)** – reports the amount of fraud, customer and departmental error. Latest published figures: <http://www.dwp.gov.uk/asd/asd2/fraud.asp>

**Households Below Average Income (annual)** – provides estimates of patterns of disposable income in Great Britain. Latest published figures: <http://www.dwp.gov.uk/asd/hbai.asp>

**Housing Benefit and Council Tax Benefit Annual Summary of Statistics** – provides statistics on Housing Benefit /Council Tax Benefit from a 1 per cent sample of data from Local Authorities. Latest published figures: <http://www.dwp.gov.uk/asd/hbctb.asp>

**Housing Benefit and Council Tax Benefit Quarterly Summary of Statistics** – provides statistics on Housing Benefit /Council Tax Benefit from quarterly caseload counts. Includes average amounts of benefit. Latest published figures: <http://www.dwp.gov.uk/asd/hbctb.asp>

**Housing Benefit and Council Tax Benefit Quarterly Performance Statistics** – provides high level statistics on Local Authority processing of Housing Benefit / Council Tax Benefit from quarterly administrative returns. Includes speed of processing new claims and charges of circumstances. Latest published figures: [http://www.dwp.gov.uk/asd/asd1/hb\\_ctb/performance.asp](http://www.dwp.gov.uk/asd/asd1/hb_ctb/performance.asp)

**Housing Benefit Quarterly Fraud Performance Statistics** – provides high level statistics on Local Authority fraud performance from quarterly administrative returns. Includes numbers of referrals, investigations actioned and sanctions administered. Latest published figures: [http://www.dwp.gov.uk/asd/asd1/hb\\_ctb/performance.asp](http://www.dwp.gov.uk/asd/asd1/hb_ctb/performance.asp)

**Incapacity Benefit and Severe Disablement Allowance Quarterly Summary of Statistics** –provides statistics on Incapacity Benefit and Severe Disablement Allowance claimants. Latest published figures: [http://www.dwp.gov.uk/asd/ib\\_sda.asp](http://www.dwp.gov.uk/asd/ib_sda.asp)

**Income Support Statistics Quarterly Enquiry** – provides statistics on Income Support claimants. Latest published figures: <http://www.dwp.gov.uk/asd/isqse.asp>

**Industrial Injuries Disablement Benefit and Reduced Earnings Allowance Statistics (annual)** – provides statistics on current assessments and movements during statistical period.

**Industrial Injuries Disablement Benefit Quarterly Summary of Statistics** – provides statistics on people in receipt of Industrial Injuries Disablement Benefit, new claims and newly diagnosed prescribed diseases. Latest published figures: <http://www.dwp.gov.uk/asd/iidb.asp>

**Jobseeker's Allowance Quarterly Statistical Enquiry** - provides statistics on Jobseeker's Allowance claimants. Latest published figures: [http://www.dwp.gov.uk/asd/jsa\\_qse.asp](http://www.dwp.gov.uk/asd/jsa_qse.asp)

**Migrant Workers Statistics (annual)** – provides statistics on migrant workers. Latest published figures: [http://www.dwp.gov.uk/asd/migrant\\_workers.asp](http://www.dwp.gov.uk/asd/migrant_workers.asp)

**New Deal for Disabled people (quarterly)** – provides statistics on the New Deal for Disabled people. Latest published figures: <http://www.dwp.gov.uk/asd/nddp.asp>

**New Deal for Lone Parents (quarterly)** – provides statistics on the New Deal for Lone Parents. Latest published figures: <http://www.dwp.gov.uk/asd/ndlp.asp>

**New Deal for Young People and Long-term Unemployed People aged 25+ (quarterly)** – provides statistics on the New Deal for Young People and the New Deal for Long-term Unemployed People aged 25+. Latest published figures: <http://www.dwp.gov.uk/asd/ndyp.asp>

**Pension Credit Quarterly Summary of Statistics** – provides statistics on Pension Credit claimants. Latest published figures: <http://www.dwp.gov.uk/asd/pcqse.asp>

**Pensioner Income Series (annual)** - examines the levels, sources and distribution of pensioners' incomes and the position of pensioners within the population income distribution. Latest published figures: [http://www.dwp.gov.uk/asd/asd6/pensioners\\_income.asp](http://www.dwp.gov.uk/asd/asd6/pensioners_income.asp)

**State Pension Summary of Statistics (six-monthly)** – provides statistics on State Pension claimants residing in GB and overseas. Latest published figures: <http://www.dwp.gov.uk/asd/sossp.asp>

**Second Tier Pension Provision (annual)** – contains analysis of contracted out pension schemes. Latest published figures: [http://www.dwp.gov.uk/asd/asd1/dsu/second\\_tier/second\\_tier.asp](http://www.dwp.gov.uk/asd/asd1/dsu/second_tier/second_tier.asp)

**Take-up of Income-Related Benefits (annual)** - contains information on the take-up of the main income related benefits in Great Britain: Income Support, Housing Benefit, Council Tax Benefit and Jobseeker's Allowance (income based). Take-up is measured by caseload - the number of benefit recipients compared with the number who would be receiving if everyone took up their entitlement for the full period of their entitlement - and expenditure - the total amount of benefit received compared with the total amount that would be received if everyone took up their entitlement for the full period of their entitlement. Latest published figures: <http://www.dwp.gov.uk/asd/irb.asp>

**Tax/Benefit Model Tables (annual)** – designed to illustrate the weekly financial circumstances of a selection of hypothetical local authority and private tenants. Latest published figures: <http://www.dwp.gov.uk/asd/tbmt.asp>

**Work and Pension Statistics (annual)** – a summary of all Department for Work and Pensions' National Statistics, covers all benefits and schemes. Also includes take up of benefits and appeals. Latest published figures: <http://www.dwp.gov.uk/asd/wandp.asp>

**Work Based Learning for Adults (quarterly)** – provides statistics on Work Based Learning for Adults. Latest published figures: <http://www.dwp.gov.uk/asd/wbla.asp>

### **Other statistical outputs issued by the Department for Work and Pensions:**

**Benefit Expenditure Tables** - financial year historic information on benefit expenditure and caseloads, along with forecasts are available from <http://www.dwp.gov.uk/asd/asd4/expenditure.asp>

**Neighbourhood Statistics** – ward and local authority statistics for Income Support, Jobseeker's Allowance (income based), Incapacity Benefit, Severe Disablement Allowance, Attendance Allowance, Disability Living Allowance and State Pension are available from <http://www.neighbourhood.statistics.gov.uk/home.asp> (1998 - 2000); from <http://www.dwp.gov.uk/asd/asd1/neighbourhood/neighbourhood.asp> (2001-2003); or on request.