

10th April 2003
IAD100403-statsum(i)

Coverage: Great Britain
Theme: Social and Welfare

DWP Department for Work and Pensions

Issued by:
Information Centre
Information and Analysis Directorate
Department for Work and Pensions

Telephone :
Press Office : 020 7238 0866
Public Enquiries : 020 7712 2171

Website :
www.dwp.gov.uk

Statistician:
Stuart Grant
Information Centre
Information and Analysis Directorate
Department for Work and Pensions
Room BP 5 2 01
Benton Park View
Benton Park Road
Longbenton
NEWCASTLE UPON TYNE
NE98 1YX

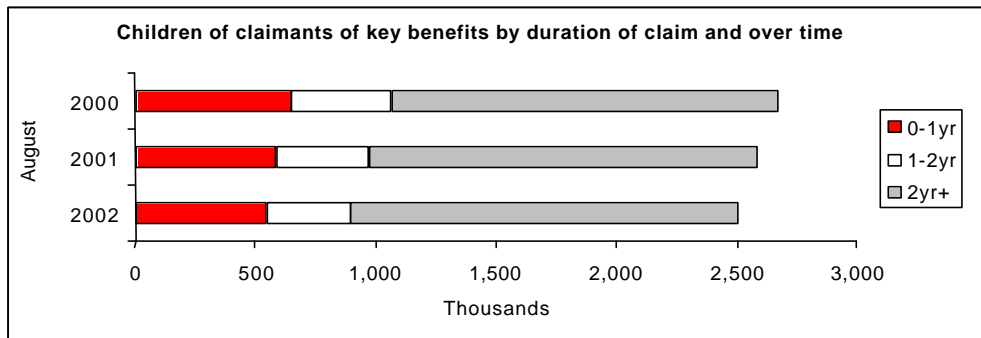
Telephone : 0191 225 6048
Facsimile : 0191 225 3193
email : stuart.grant@dwp.gsi.gov.uk

Next Publication:
19th June 2003

DWP STATISTICAL SUMMARY – MARCH 2003

Client Group Analysis:

Families with Children:

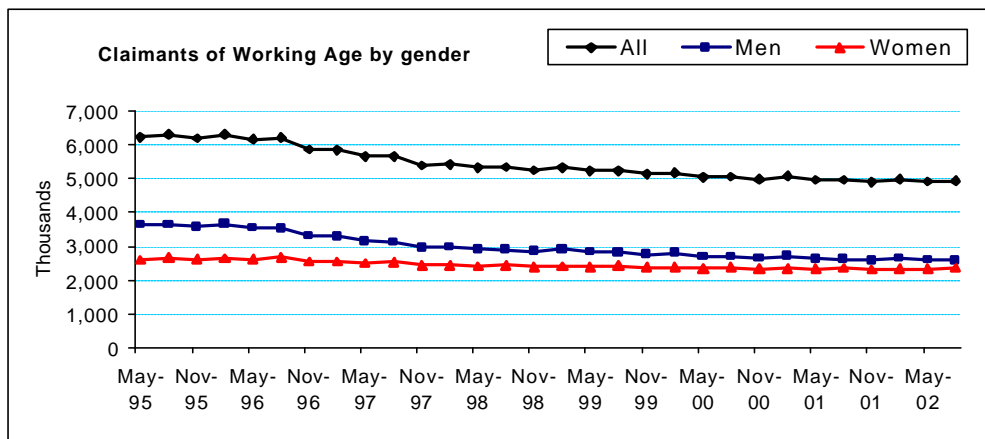


At August, 2002:

- 2.5 million children for whom an additional allowance of benefit was payable (19.4% of children under 16 and young adults aged 16-18 in full time education) were living in families claiming a key benefit. This number was 165 thousand fewer than 2 years earlier.
- 64% of them had been on benefit for at least two years.

Latest published figures: <http://www.dwp.gov.uk/asd/cga.html>

Population of Working Age:

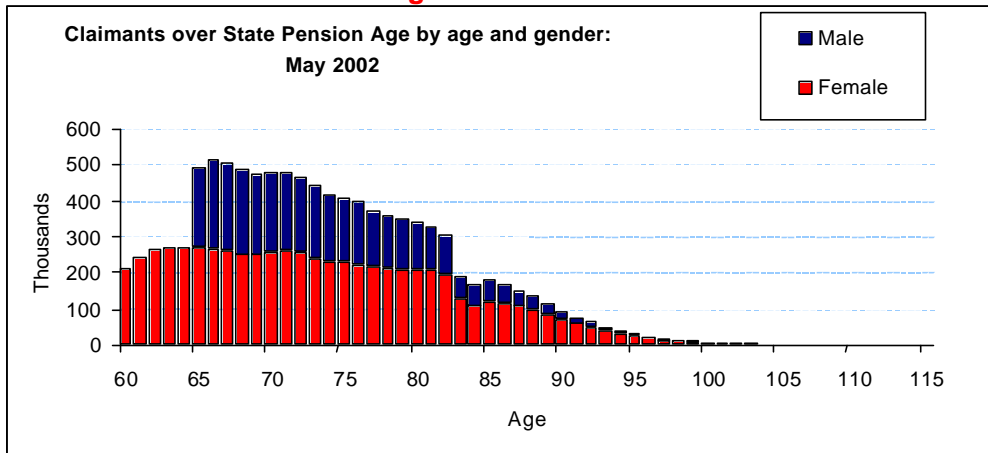


At August, 2002:

- Over 4.9 million people of working age (14.1%) were claiming a key benefit.
- 48% of claimants are women.

Latest published figures: <http://www.dwp.gov.uk/asd/cga.html>

Population over State Pension Age:



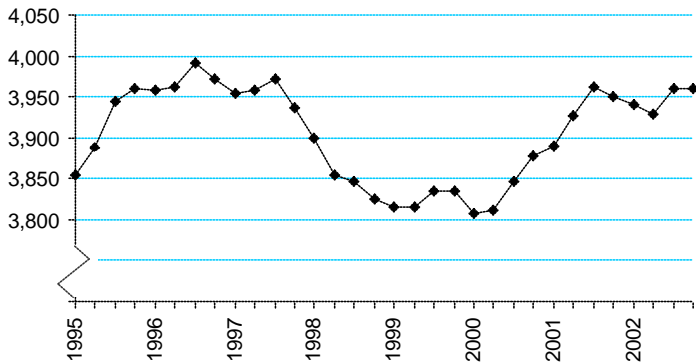
At May, 2002:

- Just over 10.4 million (99%) people over state pension age were claiming a key benefit.
- 37% of claimants are men.

Latest published figures: <http://www.dwp.gov.uk/asd/cga.html>

Income Support:

Number of recipients (000s)

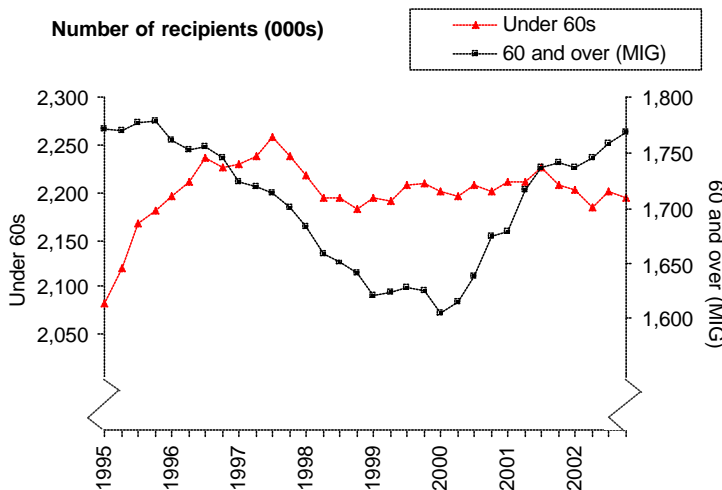


At 29th November, 2002:

- All claimants: 4.0 million (£71 per week), rose by 12 thousand over the year to November 2002.
- Lone parents (excluding the disabled) represent 21% of the IS caseload – 843 thousand (£112 per week).
- Disabled recipients represent 27% of the caseload – 1,086 thousand (£79 per week) and has been increasing since 1993.
- Almost two thirds of recipients are women.

Latest published figures:

<http://www.dwp.gov.uk/asd/isqse.html>



Caution: multiple axes are used to show recent trends on the same chart.

At 29th November, 2002:

- The 60 and over (Minimum Income Guarantee – MIG) caseload: 1.8 million (£49 per week), rose by 26 thousand over the year to November 2002.
- The non-MIG caseload (those aged under 60): 2.2 million (£89 per week), fell by 14 thousand over the year to November 2002.

Latest published figures:

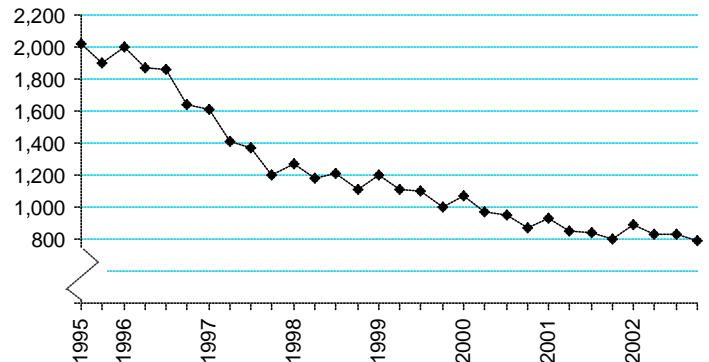
<http://www.dwp.gov.uk/asd/isqse.html>

Caution:

Variable scale vertical axes are used to show recent trends.

Jobseeker's Allowance (not seasonally adjusted):

Number of recipients (000s)



At 14th November, 2002:

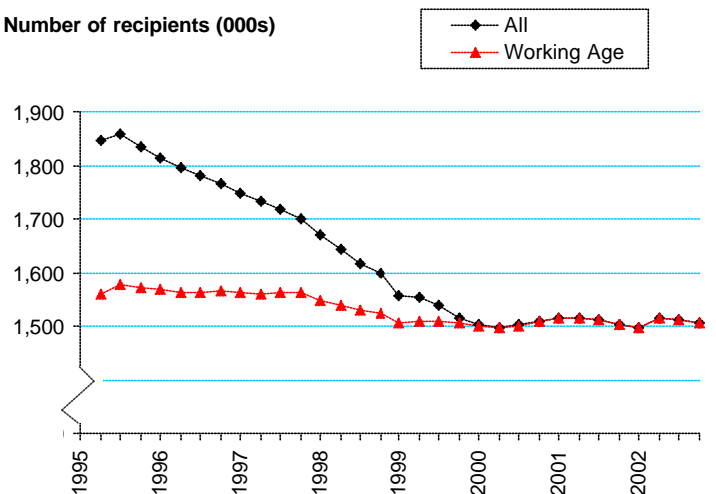
- Total claimants: 872 thousand.
- Total recipients: 786 thousand, 156 thousand with only contribution-based JSA, 630 thousand with income-based JSA (including 18 thousand with underlying entitlement to contribution-based benefit).
- Average weekly entitlement: £62 income-based, £52 contribution-based.
- A quarter of claimants are women.

Latest published figures:

http://www.dwp.gov.uk/asd/jsa_qse.html

Incapacity Benefit:

Number of recipients (000s)



At 30th November, 2002:

- Total claimants: 2.4 million.
- Total recipients: 1.5 million.
- Average amount: £83 per week.
- Almost two-thirds of recipients are men

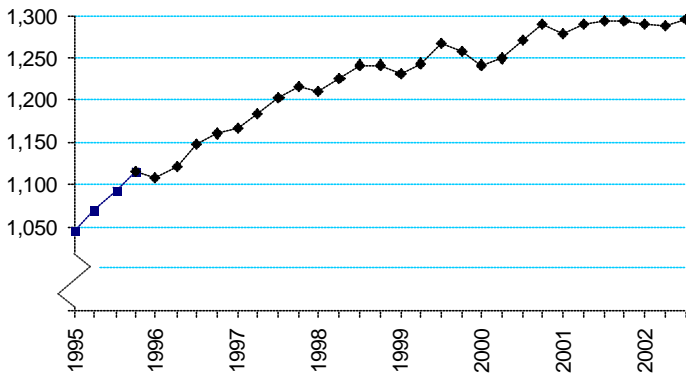
NB: People in receipt of Invalidity Benefit who reached state pension age before 13 April 1995 were able to get Incapacity Benefit for up to five years beyond pension age. As of May 2000 the entitlement of all these cases should have ceased. The short term rate is payable for people over pension age for up to a year, but only if incapacity began before they reached state pension age.

Latest published figures:

http://www.dwp.gov.uk/asd/ib_sda.html

Attendance Allowance:

Number of recipients (000s)



At 31st August, 2002:

- Total recipients: 1.3 million of which 624 thousand receive the higher rate and 673 thousand the lower.
- Average amount: £47 per week.
- 71% of recipients are women.

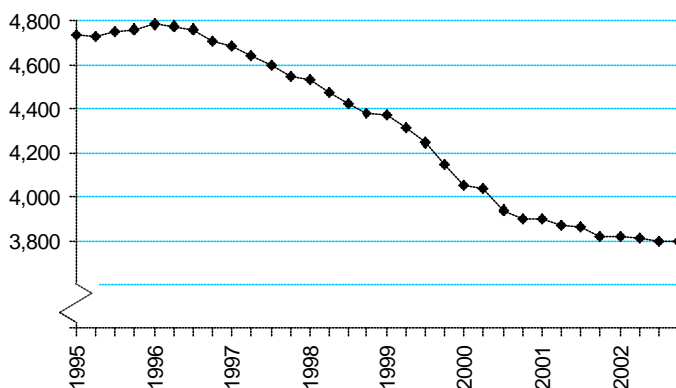
NB: Prior to the fourth quarter of 1995, Attendance Allowance caseload figures were collected annually and thereafter quarterly.

Latest published figures:

<http://www.dwp.gov.uk/asd/dcm.html>

Housing Benefit:

Number of recipients (000s)



At 14th November, 2002:

- Total recipients: 3.8 million.
- Average weekly amount: £57
- Total recipients (aged over 60): 1.7 million (at May 2001).
- Total recipients (with children): 1.2 million (at May 2001).
- 70% of HB recipients are also in receipt of IS or JSA (income based).

Latest published figures:

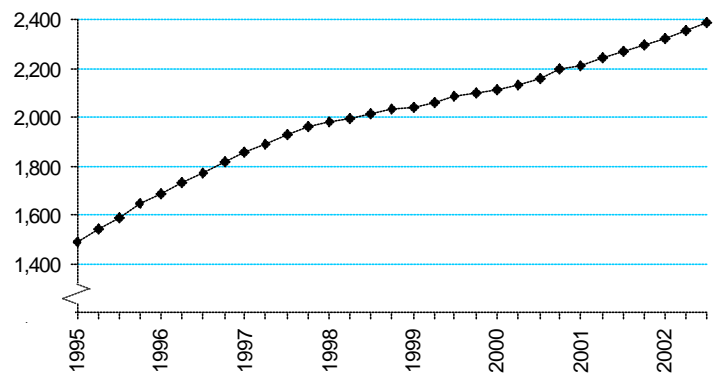
<http://www.dwp.gov.uk/asd/hbctb.html>

Caution:

Variable scale vertical axes are used to show recent trends.

Disability Living Allowance:

Number of recipients (000s)



At 31st August, 2002:

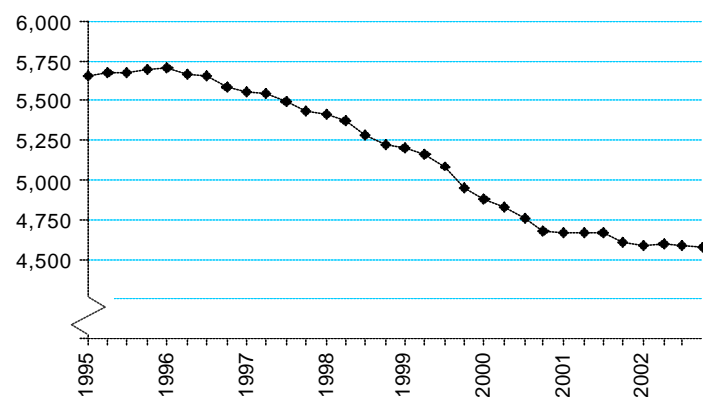
- Total recipients: 2.4 million.
- Average amount: £55 per week.
- 577 thousand received only the mobility component, 314 thousand received only the care component and 1.5 million received both mobility and care components
- 49% of recipients are women.

Latest published figures:

<http://www.dwp.gov.uk/asd/dcm.html>

Council Tax Benefit:

Number of recipients (000s)



At 14th November, 2002:

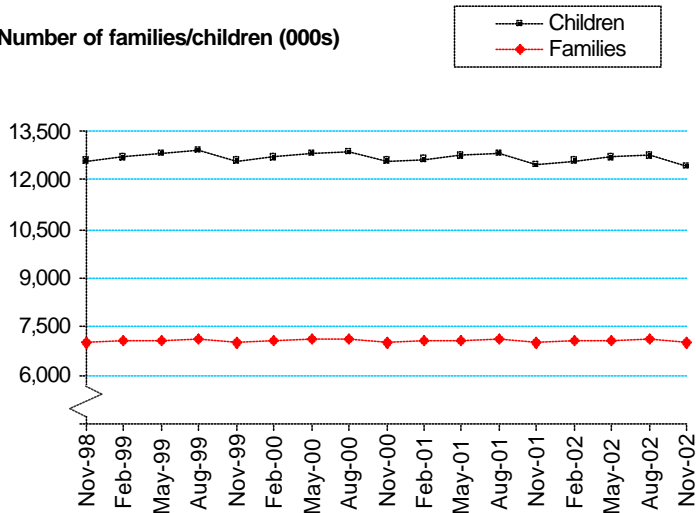
- Total recipients: 4.6 million (excludes second adult rebates).
- Average weekly amount: £11
- Total recipients (aged over 60): 2.4 million (at May 2001).
- Total recipients (with children): 1.2 million (at May 2001).
- 69% of CTB recipients are also in receipt of IS or JSA (income based).

Latest published figures:

<http://www.dwp.gov.uk/asd/hbctb.html>

Child Benefit:

Number of families/children (000s)



At 30th November, 2002:

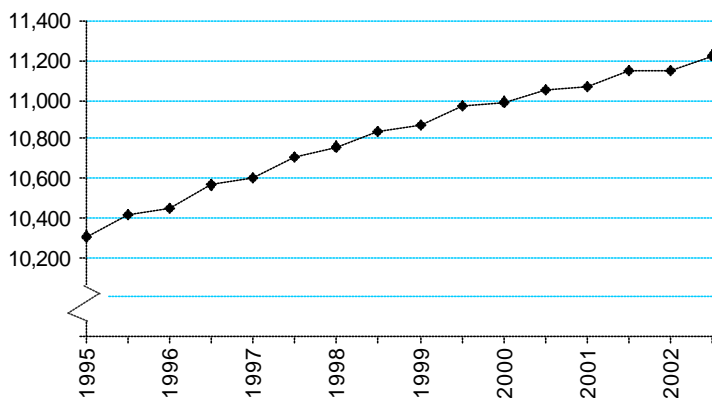
- Total children: 12.5 million in 7.0 million families.
- It is estimated that 95% of Child Benefit recipients are female.

Latest published figures:

<http://www.dwp.gov.uk/asd/cb.html>

State Pension:

Number of recipients (000s)



At 30th September, 2002:

- Total recipients: 11.2 million, of which 0.9 million reside overseas.
- Average amount of entitlement to State Pension:
All pensioners: £76 per week.
Men: £92 per week.
Women: £67 per week.
- 63% of recipients are women.

Latest published figures:

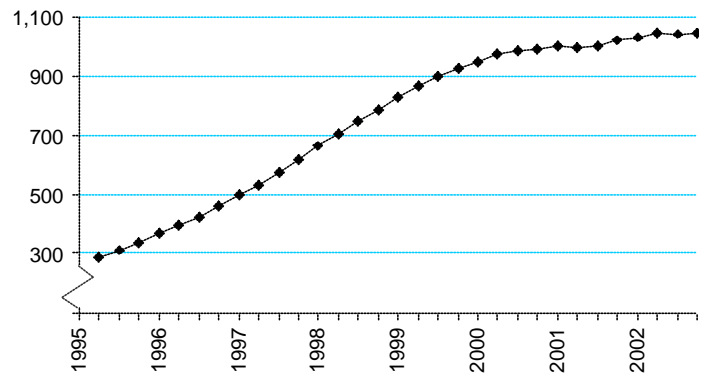
<http://www.dwp.gov.uk/asd/sossp.html>

Caution:

Variable scale vertical axes are used to show recent trends.

Child Support Agency:

Number of 'Live' and fully assessed cases (000s)



At 30th November, 2002:

- Total 'live' and fully assessed cases: 1.0 million.

For fully assessed cases:

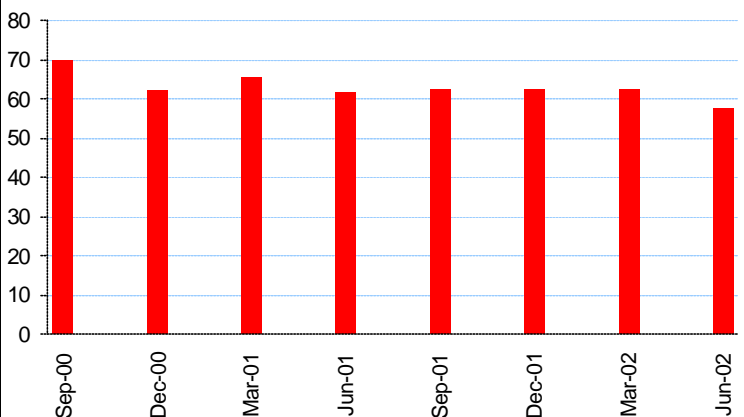
- Average assessed maintenance for employees is £39 per week; for the self employed it is £23 per week.
- For those using the CSA collection service, 54.2% are fully compliant, 21.6% are partially compliant and 24.2% are nil compliant.
- 94% of parents with care are female.

Latest published figures:

<http://www.dwp.gov.uk/asd/csa.html>

The Appeals Service:

Number of new lodgements (000s)



Quarter ending June, 2002:

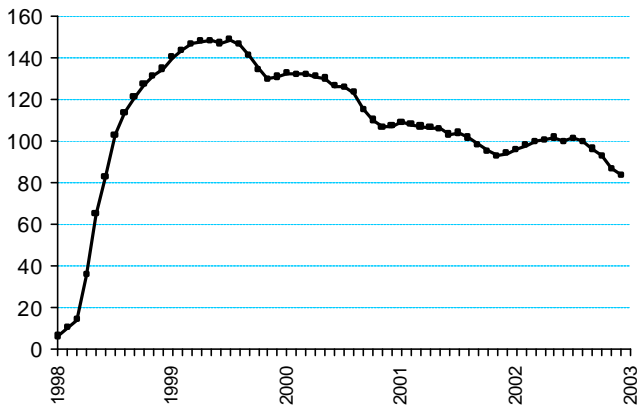
- Number of new lodgements: 57.7 thousand.
- Total number of appeals cleared at hearings: 44.1 thousand. Of these, 19.4 thousand (44%) were found in favour of the appellant.
- 51.6% of appeals heard at oral hearings were found in the appellant's favour.
- 22.2% of appeals heard at paper hearings were found in the appellant's favour.

Latest published figures:

<http://www.dwp.gov.uk/asd/qat.html>

New Deal for Young People:

Number of participants (000s)



By end of December 2002:

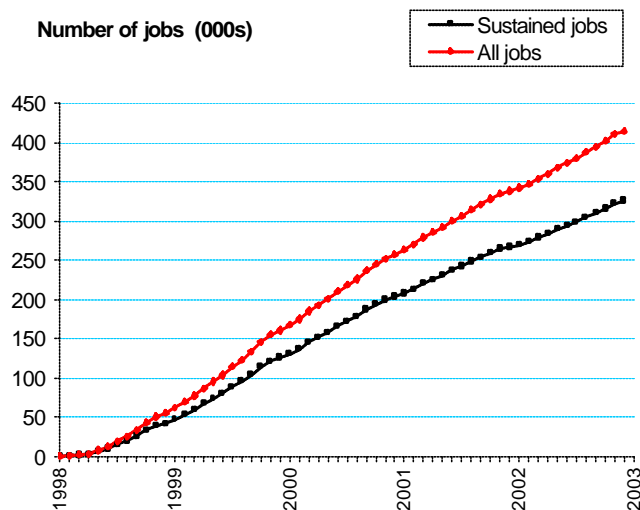
- 909 thousand starts on New Deal by the end of December 2002; 825 thousand have left, leaving 84 thousand participants at the end of December 2002.
- Of the leavers, 39% have entered sustained unsubsidised jobs, 12% have transferred to other benefits, 20% have left for other known reasons, and 29% for unknown reasons.

Latest published figures:

<http://www.dwp.gov.uk/asd/ndyp.html>

Young People into Employment:

Number of jobs (000s)



By end of December 2002:

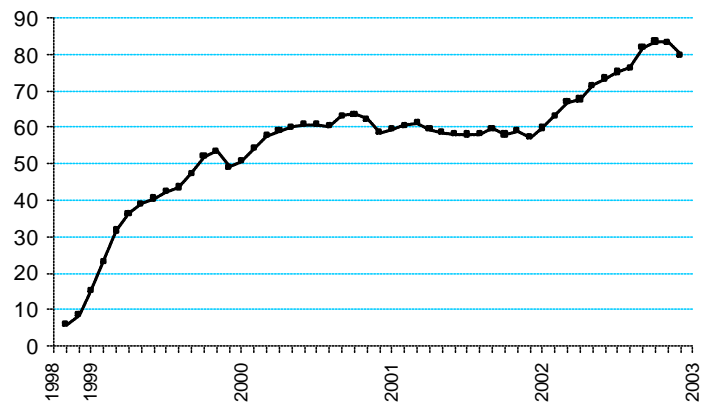
- 414 thousand young people in jobs to the end of December 2002. Of which, 326 thousand were sustained jobs, and 89 thousand were jobs lasting less than 13 weeks.

Latest published figures:

<http://www.dwp.gov.uk/asd/ndyp.html>

New Deal for Lone Parents:

Number of participants (000s)



By end of December 2002:

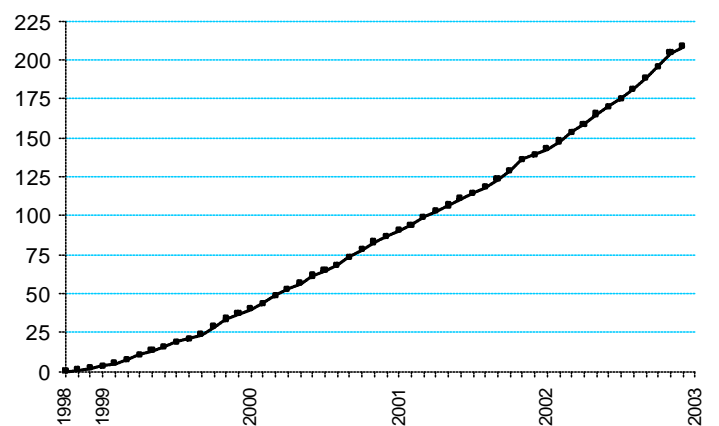
- Starts on the NDLP caseload reached 438 thousand at the end of December 2002, an increase of 31 thousand on September 2002.
- A total of 358 thousand lone parents had left NDLP by end of December 2002.
- Just under 80 thousand lone parents were participating on NDLP at end of December 2002.

Latest published figures:

<http://www.dwp.gov.uk/asd/ndlp.html>

Lone Parents into Employment:

Number of jobs (000s)



By end of December 2002:

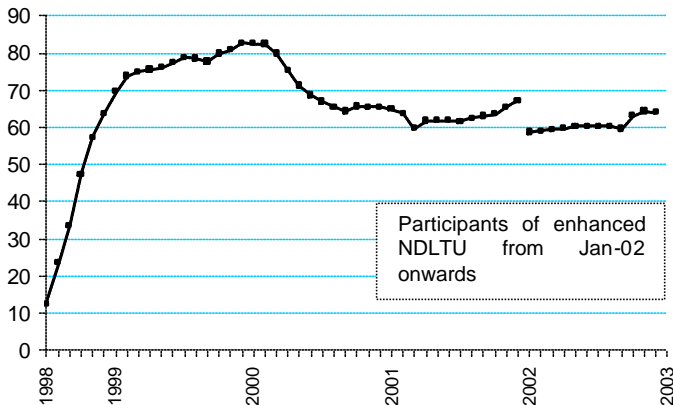
- 208 thousand jobs gained by participants on New Deal for Lone Parents.

Latest published figures:

<http://www.dwp.gov.uk/asd/ndlp.html>

New Deal for Long Term Unemployed People aged 25+:

Number of participants (000s)



By end of December 2002:

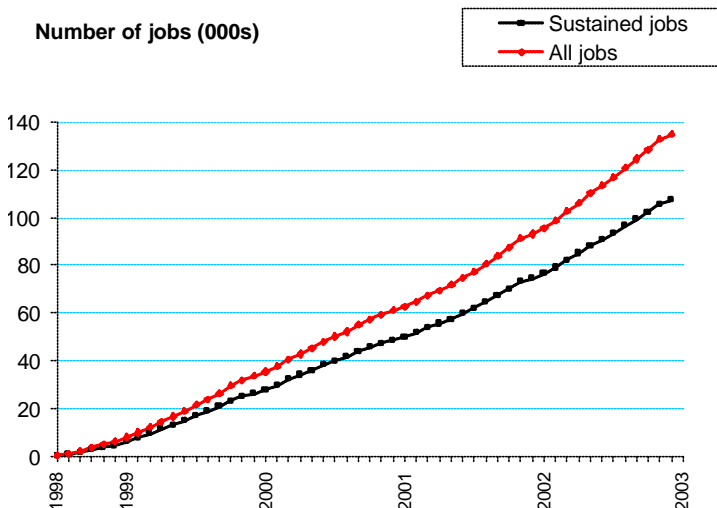
- 568 thousand starts on New Deal by the end of December 2002 - 500 thousand have left, leaving 69 thousand participating at the end of December 2002 (5 thousand of which are on the pre-April 2001 programme).

Latest published figures:

<http://www.dwp.gov.uk/asd/ndyp.html>

Long Term Unemployed People aged 25+ into Employment:

Number of jobs (000s)



By end of December, 2002:

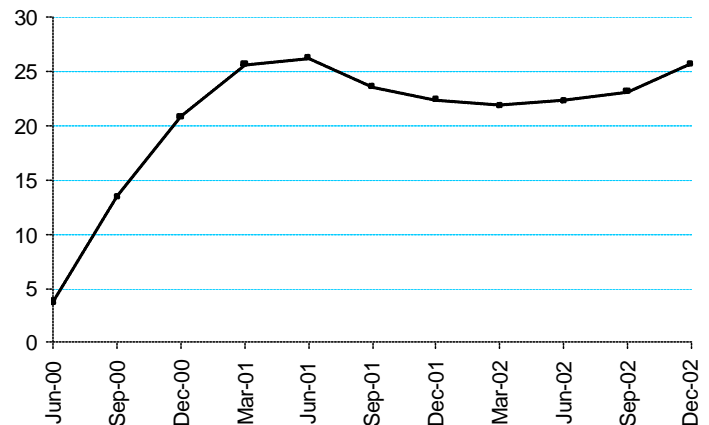
- 136 thousand people on New Deal into jobs to the end of December 2002. Of which, 107 thousand were sustained jobs, and 29 thousand were jobs lasting less than 13 weeks.

Latest published figures:

<http://www.dwp.gov.uk/asd/ndyp.html>

Employment Zones:

Number of participants (000s)



from July 2001 figures include people returning to Employment Zones for a second time

By the end of December 2002:

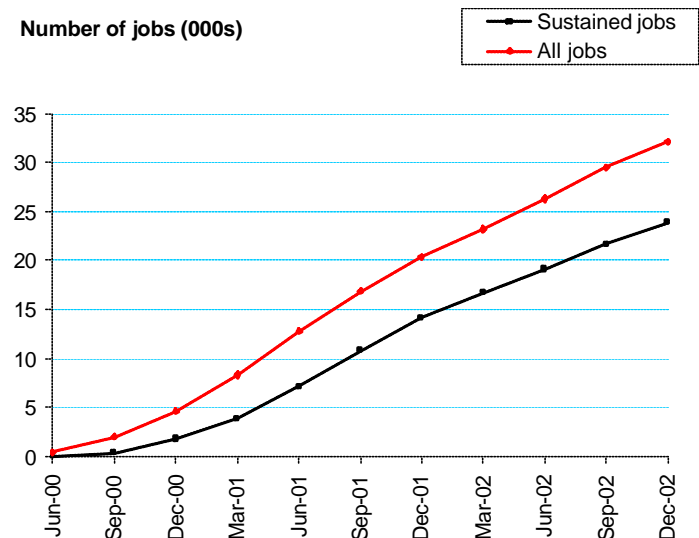
- 74,600 people started on an Employment Zone between April 2000 when the Zones started and December 2002. 84% of entrants were male, 67% were white, and 20 per cent were recorded as having a disability.
- On 31st December 2002, there were 25,700 people participating on an employment zone, of whom 9,100 were returning for a repeat spell

Latest published figures:

http://www.dwp.gov.uk/asd/emp_zones/emp_zones.html

Employment Zone Participants into Employment:

Number of jobs (000s)



By end of December 2002:

- 32,100 Employment Zone participants entered employment by December 2002, of which 3,600 were returning participants
- 23,900 Employment Zone participants had been employed for 13 weeks or more by the end of December 2002

Latest published figures:

http://www.dwp.gov.uk/asd/emp_zones/emp_zones.html

A brief description of the analyses included in this publication:

Client Group Analysis (Families with Children) combines data collected for Jobseeker's Allowance, Income Support, Disability Living Allowance, Incapacity Benefit and Severe Disablement Allowance on children / young adult dependants for whom additional benefit is payable.

Client Group Analysis (Working Age) combines data collected for Jobseeker's Allowance, Incapacity Benefit, Severe Disablement Allowance, Disability Living Allowance and Income Support.

Client Group Analysis (Over State Pension Age) combines data for Attendance Allowance, Disability Living Allowance, Incapacity Benefit, Income Support, State Pension and Severe Disablement Allowance.

Income Support (IS) was introduced on April 11th, 1988 and is an income related benefit that can be claimed by people normally aged 18 or over that work less than 16 hours a week and have insufficient income to meet their needs. Additional help is available for partners and children of claimants

Incapacity Benefit (IB) was introduced on April 13th, 1995 and is paid to people who are incapable of work and who have paid sufficient contributions throughout their working life.

Jobseeker's Allowance (JSA) was introduced on October 7th, 1996 and is a contributory or income related benefit paid to people under State Pension age who are available for and actively seeking work of at least forty hours per week. They agree with Jobcentre Plus any restrictions on their availability for work and the steps they intend to take in order to find work. Additional help is available for partners and children of claimants.

Disability Living Allowance (DLA) was introduced on April 1st, 1992 and is a benefit for people who have become disabled before the age of 65 and who need assistance with personal care or mobility.

Attendance Allowance (AA) was introduced on December 6th, 1971 and is a benefit for people over the age of 65 who are so severely disabled, physically or mentally, that they need a great deal of help with personal care or supervision. This assistance could be required during the day or at night. Those requiring constant help receive the higher rate of benefit.

Housing Benefit (HB) was introduced on April 1st, 1983 and is an income related benefit designed to help people on low incomes pay for rented accommodation whether in or out of work.

Council Tax Benefit (CTB) was introduced on April 1st, 1993 and is an income related benefit, calculated in a similar way to Housing Benefit, which has been designed to help people on low incomes pay their council tax.

Child Benefit (ChB) was introduced on April 5th, 1977 and is a benefit paid for all children up to the age of sixteen (or nineteen if in full time education up to A-level or equivalent standard). A higher rate of child benefit is payable for the first child. Certain lone parents with preserved rights may remain eligible for Child Benefit (Lone Parent).

State Pension (SP) was introduced on January 1st, 1909 and is paid to people who have attained the state pension age (65 for men, 60 for women) and who fulfil the residency and contributions conditions.

Child Support Agency (CSA) was introduced on April 5th, 1993 and is responsible for tracing Non-Resident Parents (NRPs) and working out how much maintenance they should pay. The CSA can collect and enforce maintenance assessments.

The Appeals Service (TAS) The Independent Tribunal Service was introduced in 1984 to provide an independent appeals system. It was replaced by the Appeals Service in April 2000.

New Deal for Young People Those aged 18-24 who have been claiming JSA continuously for 6 months become eligible for New Deal when they reach the 6-month threshold. Those joining New Deal first enter a Gateway period lasting up to 4 months, during which Jobcentre Plus and their partners will work with them to improve their employability, and to find unsubsidised jobs for as many as possible.

New Deal for Long Term Unemployed aged 25+ Those aged 25+ who have been claiming JSA continuously for 2 years become eligible for New Deal when they reach the 2 year threshold. Those joining New Deal first enter an Advisory Process lasting between 3-6 months with an average of 7 interviews during which Jobcentre Plus and their partners will work with them to improve their employability, and to find unsubsidised jobs for as many as possible. From April 2001, those aged 25+ who have been claiming JSA continuously for 18 months become eligible for New Deal when they reach the 18 month threshold. Those joining New Deal first enter a flexible Gateway period lasting up to four months where provision and level of help will be tailored to the needs of the individual.

New Deal for Lone Parents is available to all lone parents on Income Support on a voluntary basis, but originally only those lone parents with a youngest child of school age (5 years and 3 months) were sent an invitation letter explaining what the service could offer. Following the initial adviser interview, lone parents may either agree or decline to join the NDLP caseload. Whilst on the caseload participants will receive a package of support and guidance to help them into jobs.

Employment Zones *Employment Zones pool funds for training, Jobcentre Plus support and the equivalent of benefit to maximise flexibility and give individuals more say in the choices which affect them. The aim is to get people into jobs and keep them in work. Employment Zones were set up in April 2000 in areas of persistently high unemployment. They are a mandatory programme for participants receiving Income-Based Jobseeker's Allowance who have been unemployed for 12 or 18 months (depending on the zone). From July 2001, Zone participants who had been unsuccessful in obtaining a job after 26 weeks of active job-search in Step 2 of the programme, are re-mandated to Zones after a further 13 week period of claiming Income-Based Jobseeker's Allowance.*

Other National Statistics issued by the Department for Work and Pensions:

Abstract of Statistics for Benefits and Contributions and Indices of Prices and Earnings (annual) – provides a reference source for those people interested in the main aspects of benefits, contributions and indices of prices and earnings. Latest published figures: http://www.dwp.gov.uk/asd/other_stats.html

Appeal Tribunal Statistics (quarterly) – provides statistics on appeals and decisions. Latest published figures: <http://www.dwp.gov.uk/asd/qat.html>

Fraud and Error in Claims for Income Support and Jobseeker's Allowance (six monthly) – reports the amount of fraud, customer and departmental error. Latest published figures: <http://www.dwp.gov.uk/asd/asd2/fraud.html>

Child Benefit Statistics Quarterly Enquiry – provides statistics on Child Benefit claimants. Latest published figures: <http://www.dwp.gov.uk/asd/cb.html>

Child Support Agency Quarterly Summary of Statistics – provides statistics on the Child Support Agency. Latest published figures: <http://www.dwp.gov.uk/asd/csa.html>

Contributions and Qualifying Years for Retirement Pension (annual) – provides statistics on the number of people who have qualified for State Pension.

Client Group Analysis: Quarterly Bulletin on Families with Children on Key Benefits - uses existing data to give a more coherent picture for those families with children on key benefits in Great Britain. Includes statistics on Maternity Allowance. Latest published figures: <http://www.dwp.gov.uk/asd/cga.html>

Client Group Analysis: Quarterly Bulletin on the Population of Working Age on Key Benefits – uses existing data to give a more coherent picture for those of working age on key benefits in Great Britain. Latest published figures: <http://www.dwp.gov.uk/asd/cga.html>

Client Group Analysis: Quarterly Bulletin on the Population over State Pension age – uses existing data to give a more coherent picture for those of over state pension age on key benefits in Great Britain. Latest published figures: <http://www.dwp.gov.uk/asd/cga.html>

Disability Living Allowance, Attendance Allowance and Invalid Care Allowance Statistics (quarterly) – provides statistics on Disability Living Allowance, Attendance Allowance and Invalid Care Allowance. Latest published figures: <http://www.dwp.gov.uk/asd/dcm.html>

Employment Zones (six-monthly) - contains information on the number of Employment Zone starters and participants, the characteristics of entrants, those sustaining 13 weeks in employment and those returning to Employment Zones for a second time; together with information on numbers into employment. Latest published figures: http://www.dwp.gov.uk/asd/emp_zones/emp_zones.html

Family Resources Survey (annual) – provides characteristics of individuals at various positions in the income distribution. Latest published figures: <http://www.dwp.gov.uk/asd/frs/>

Households Below Average Income (annual) – provides estimates of patterns of disposable income in Great Britain. Latest published figures: <http://www.dwp.gov.uk/asd/hbai.html>

Housing Benefit and Council Tax Benefit Annual Summary of Statistics – provides statistics on Housing Benefit /Council Tax Benefit from a 1% sample of data from Local Authorities. Latest published figures: <http://www.dwp.gov.uk/asd/hbctb.html>

Housing Benefit and Council Tax Benefit Quarterly Summary of Statistics – provides statistics on Housing Benefit /Council Tax Benefit from quarterly caseload counts. Includes average amounts of benefit. Latest published figures: <http://www.dwp.gov.uk/asd/hbctb.html>

Incapacity Benefit and Severe Disablement Allowance Quarterly Summary of Statistics –provides statistics on Incapacity Benefit and Severe Disablement Allowance claimants. Latest published figures: http://www.dwp.gov.uk/asd/ib_sda.html

Income Support Statistics Quarterly Enquiry – provides statistics on Income Support claimants. Latest published figures: <http://www.dwp.gov.uk/asd/isqse.html>

Industrial Injuries Disablement Benefit and Reduced Earnings Allowance Statistics (annual) – provides statistics on current assessments and movements during statistical period.

Industrial Injuries Disablement Benefit Quarterly Summary of Statistics on New Claims (Accidents and Prescribed Diseases) and First Diagnoses (Prescribed Diseases only) – provides statistics on new claims and newly diagnosed prescribed diseases. Latest published figures: <http://www.dwp.gov.uk/asd/iidb.html>

Jobseeker's Allowance Quarterly Statistical Enquiry - provides statistics on Jobseeker's Allowance claimants. Latest published figures: http://www.dwp.gov.uk/asd/jsa_qse.html

Migrant Workers Statistics (annual) – provides statistics on migrant workers. Next figures to be published on 10th April 2003. <http://www.dwp.gov.uk/asd/workingage.html>

New Deal for Lone Parents (quarterly) – provides statistics on the New Deal for Lone Parents. Latest published figures: (available on Intranet only) <http://www.dwp.gov.uk/asd/ndlp.html>

New Deal for Young People and Long-term Unemployed People aged 25+ (quarterly) – provides statistics on the New Deal for Young People and the New Deal for Long-term Unemployed People aged 25+. Latest published figures: <http://www.dwp.gov.uk/asd/ndyp.html>

Pensioner Income Series (annual) - examines the levels, sources and distribution of pensioners' incomes and the position of pensioners within the population income distribution. Latest published figures: http://www.dwp.gov.uk/asd/asd6/pensioners_income.html

State Pension Summary of Statistics (six-monthly) – provides statistics on State Pension claimants residing in GB and overseas. Latest published figures: <http://www.dwp.gov.uk/asd/sossp.html>

Second Tier Pension Provision (annual) – contains analysis of contracted out pension schemes.

Take-up of Income-Related Benefits (annual) - contains information on the take-up of the main income related benefits in Great Britain: Income Support, Housing Benefit, Council Tax Benefit and Jobseeker's Allowance (income based). Take-up is measured by caseload - the number of benefit recipients compared with the number who would be receiving if everyone took up their entitlement for the full period of their entitlement - and expenditure - the total amount of benefit received compared with the total amount that would be received if everyone took up their entitlement for the full period of their entitlement. Latest published figures: <http://www.dwp.gov.uk/asd/irb.html>

Tax/Benefit Model Tables (annual) – designed to illustrate the weekly financial circumstances of a selection of hypothetical local authority and private tenants. Latest published figures: <http://www.dwp.gov.uk/asd/tbmt.html>

Work and Pension Statistics (annual) – a summary of all Department for Work and Pensions National Statistics, covers all social security benefits. Also includes take up of benefits and appeals. Latest published figures: <http://www.dwp.gov.uk/asd/wandp.html>

Work Based learning for Adults – provides statistics on Work Based Learning for Adults. Latest published figures: <http://www.dwp.gov.uk/asd/wbla.html>

Other statistical outputs issued by the Department for Work and Pensions:

Neighbourhood Statistics – ward and local authority statistics for Income Support, Jobseeker's Allowance (income based), Incapacity Benefit, Severe Disablement Allowance, Attendance Allowance, Disability Living Allowance and Child Benefit are available from <http://www.neighbourhood.statistics.gov.uk/home.asp> or on request.

Notes to Editors

The DWP Statistical Summary is a National Statistics publication and is produced to the high professional standards outlined in the National Statistics Code of Practice. National Statistics publications undergo regular quality assurance reviews to ensure that they meet customer needs. They are produced free from any political interference. The purpose of the DWP Statistical Summary is to provide an up-to-date overview of the most important benefits, schemes, agencies and associated bodies administered by the DWP in a concise format. Users seeking more detailed information are directed to the contact point on the front page or to the web pages listed. Financial year benefit expenditure information is available in the Department for Work and Pensions Departmental Report - The Government's Expenditure Plans 2002/03 – 2003/04. The average weekly amounts and caseloads in this summary are derived from administrative data which have been validated, cleaned and published by DWP. Many of these statistics are calculated from samples drawn at particular points in time and are therefore subject to some sampling variability. The figures have not been seasonally adjusted. Average amounts are rounded to the nearest pound.