



First Release

16 December 2009

Coverage: Great Britain

Theme

People and Places

DWP Department for Work and Pensions

Issued by:

Information Directorate
Department for Work and Pensions

Telephone:
Press Office: 0203 267 5144

Website:
www.dwp.gov.uk

Statistician:

Stuart Grant
Information Directorate
Department for Work and Pensions
Room BP5201
Benton Park Road
Newcastle-upon-Tyne
NE98 1YX

Telephone: 0114 2098229

Email:
stuart.grant@dwp.gsi.gov.uk

Next publication:

20 January 2009

DWP MONTHLY STATISTICAL SUMMARY

Introduction

This Statistical Summary pulls together the monthly statistical outputs produced by the Department for Work and Pensions (DWP) to act as a central statistical resource, where appropriate links to more detailed statistical outputs are provided.

This monthly release is a pilot approach - starting with the Housing Benefit/ Council Tax Benefit and inactive benefit Early Estimates statistics. Other monthly outputs may be added – user views on the format of this release are welcome via the contact details in the margin.

The Housing Benefit / Council Tax Benefit caseload statistics are full National Statistics; the Early Estimates are Experimental Statistics because they are based on a new methodology to provide a timelier estimate of the key benefit caseloads – for more information see the notes for editors.

The full benefit National Statistics are still released on quarterly basis and can be viewed at:

http://research.dwp.gov.uk/asd/statistical_summaries.asp

The Early Estimates for working age inactive benefit client groups are released monthly and are designed to give indicative, timely information; they are not a substitute for the National Statistics. They will be replaced by the quarterly National Statistics covering the same period when they are published. The National Statistics are the finalised figures.

Key findings

Housing Benefit /Council Tax Benefit:



- At September 2009, the total number of people claiming Housing Benefit was 4.54 million, with 5.56 million claiming Council Tax Benefit.
- 3.00 million Housing Benefit recipients were of working-age, representing almost two thirds of all Housing Benefit recipients.
- One third of Housing Benefit claimants were Local Authority tenants at September 2009.
- Over two thirds of both Housing Benefit and Council Tax Benefit recipients are in receipt of a Passported Benefit.

Further information can be viewed:

http://research.dwp.gov.uk/asd/asd1/hb_ctb/hbctb_arc.asp

Early Estimates for inactive benefits:

- Experimental statistics show that the working-age **Income Support lone parent** Early Estimate is **690 thousand** as at the end of October 2009. The final National Statistic is expected to lie within the range 680 thousand to 700 thousand. The latest National Statistic caseload figure for this client group stands at 720 thousand in May 2009
- Experimental statistics show that the **Employment and Support Allowance/ incapacity benefits (ESA/IB)** Early Estimate for October 2009 is **2.63 million**. The final National Statistic is expected to lie within the range 2.61 million to 2.65 million. The latest National Statistic for this client group stands at 2.62 million claimants in May 2009.

Further information can be viewed:

http://statistics.dwp.gov.uk/asd/early_ests.asp



Contents

1. Housing Benefit / Council Tax Benefit

	<i>page</i>
1.1 Benefit / Council Tax Benefit recipients: October 2009	3

2. Early Estimates for Working Age Inactive Benefit Client Groups

	<i>page</i>
2.1 Employment and Support Allowance / incapacity benefits client group	4
2.2 Income Support Lone Parent client group	5
Notes to Editors	7

1. Housing Benefit / Council Tax Benefit

1.1 Housing Benefit (HB) / Council Tax Benefit (CTB) recipients: September 2009

Table 1.1 Housing Benefit (HB) / Council Tax Benefit (CTB) recipients: September 2009

	All HB recipients		All CTB recipients	
	Number (thousands)	Average Award	Number (thousands)	Average Award
TOTAL	4,538.56	£81.58	5,563.92	£15.58
Passported Benefit				
In receipt of JSA (IB), IS, ESA (IB), PC (GC)	3,154.35	£85.52	3,852.73	£16.59
Not in receipt of JSA (IB), IS, ESA (IB), PC (GC)	1,380.16	£72.48	1,695.10	£13.27
Client Group				
Working Age	2,999.57	£87.93	2,971.01	£15.41
Elderly	1,538.90	£69.28	2,592.80	£15.77
Tenancy Type				
Social Rented Sector				
Local Authority Tenants	1,501.05	£67.17		
Registered Social Landlord Tenants	1,694.34	£75.82		
Private Rented Sector				
Private Regulated Tenants	52.60	£74.20		
Private Deregulated Tenants:				
Local Housing Allowance Tenants	815.97	£109.77		
Non-Local Housing Allowance Tenants	422.38	£100.89		

Source: Single Housing Benefit Extract (SHBE)

Notes relating to table 1.1:

- Housing Benefit and Council Tax Benefit recipients are individual claimants who had a live in payment claim on Thursday 10th September. Council Tax Benefit recipients exclude Second Adult Rebate cases.
- Passported Benefit and Tenancy Type breakdowns are as recorded within the Local Authorities Housing Benefit/Council Tax Benefit administration systems.
- Client Group breakdown is derived from a combination of information on passported benefit and recipient's age.
- Caseload figures are rounded to the nearest 10. Components may not sum to total due to independent rounding.
- Average award figures are shown as pounds per week and rounded to the nearest penny.
- Local Housing Allowance (LHA) Tenants may include a small number of non-LHA cases making a new claim since 6 April 2008. This will include recipients in caravan accommodation.

Latest statistical data available from: http://research.dwp.gov.uk/asd/asd1/hb_ctb/hbctb_arc.asp

2. Early Estimates for Working Age Inactive Benefit Client Groups

From the January release we will introduce some minor methodological changes to the Early Estimates which will improve the accuracy. More information will be available alongside the January release.

2.1 Employment and Support Allowance / incapacity benefits (ESA/IB) client group

The **ESA/ incapacity benefits** Early Estimate for October 2009 is **2.63 million** (estimate range is 2.61 million to 2.65 million). This represents a rise of less than half a percent since May 2009 (the latest National Statistic).

National Statistics are available for quarters up to May 2009. Final figures for the quarter ending August 2009 will be released on 17 February 2010. **The most recent National Statistics show 2.62 million individuals were in the ESA/IB client group at May 2009.**

See: <http://statistics.dwp.gov.uk/asd/tabtool.asp>

Figure 2.1 below, shows published National Statistics up to May 2009 and the range for the Early Estimates of numbers in the working age Employment and Support Allowance / incapacity benefits (ESA/IB) client group. The red line represents the monthly point estimates and the black line represents the published National Statistics. For June 2009 through to October 2009 the finalised figures will be the National Statistics, when released for the period, and they are expected to lie within the pale grey band.

Figure 2.1: ESA/IB client group. National Statistics and Early estimates

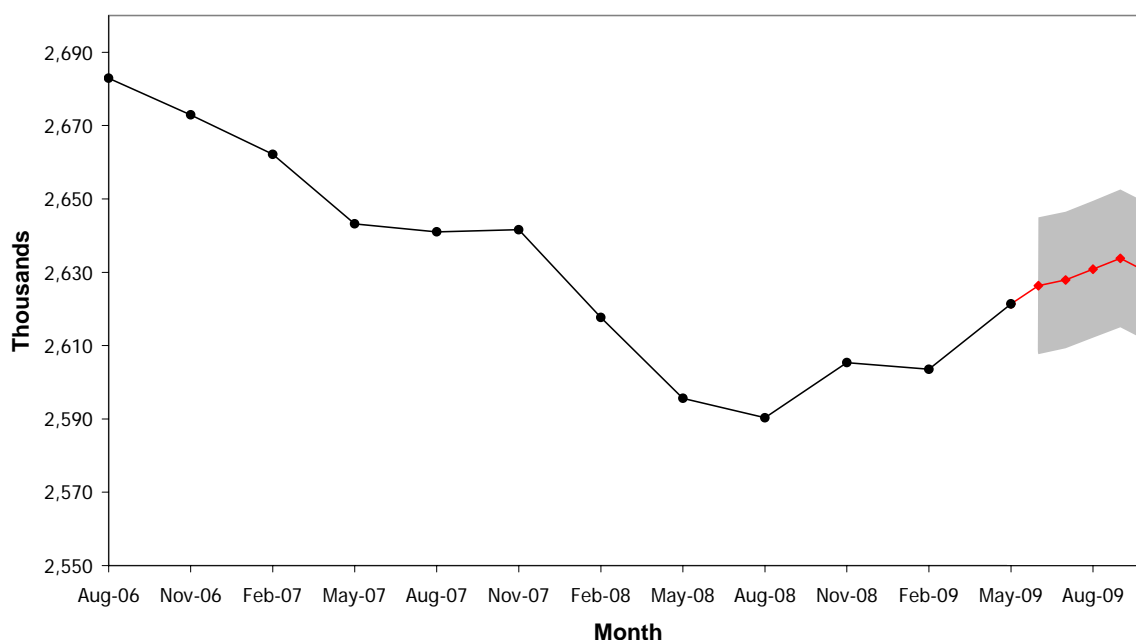


Table 2.1 Point estimate and range for the Early Estimates of numbers in working age ESA/IB client group June 2009 to October 2009

Time Series	National Statistics Number of Claimants	Early Estimate Number of Claimants	Thousands Estimated Range	
			Number of Claimants	Number of Claimants
Aug-08	2,590.61			
Nov-08	2,605.51			
Feb-09	2,603.54			
May-09	2,621.43			
Jun-09		2,630	2,610	2,640
Jul-09		2,630	2,610	2,650
Aug-09		2,630	2,610	2,650
Sep-09		2,630	2,610	2,650
Oct-09		2,630	2,610	2,650

Notes relating to figure 2.1 and table 2.1:

1. ESA/ incapacity benefits: From November 2008 the "incapacity benefits group" includes Employment and Support Allowance (ESA). ESA replaced Incapacity Benefit and Income Support paid on the grounds of incapacity for new claims from 27 October 2008. Prior to this the "incapacity benefits group" referred to claimants of Incapacity Benefit or Severe Disablement Allowance including people claiming IS on the grounds of Incapacity.
2. Early Estimates methodology: Technical document and question and answers document are available at <http://statistics.dwp.gov.uk/asd/tabtool.asp>
3. Source data: DWP Information Directorate: Work and Pensions Longitudinal Study
4. When the next quarterly National Statistics are published they will be included as the fourth quarterly National Statistic in Table 2.1, and all monthly Early Estimates included in this quarter will be removed from Table 2.1.

2.2 Income Support Lone Parent (ISLP) client group

The working-age Income Support Lone Parent Early Estimate is **690 thousand** as at the end of October 2009. The final National Statistic is expected to lie within the range 680 thousand to 700 thousand. This represents a fall of around four percent since May 2009 (the latest full National Statistic figure).

National Statistics are available for quarters up to 31 May 2009. Final figures for the quarter ending August 2009 will be released on 17 February 2010. **The most recent National Statistics show 720 thousand individuals were in the ISLP client group at May 2009.** See: <http://statistics.dwp.gov.uk/asd/tabtool.asp>

Figure 2.2 below, shows published National Statistics up to May 2009 and the range for the Early Estimates of numbers in working age Income Support Lone Parent client group. The red line represents the monthly point estimates and the black line represents the published National Statistics. For June 2009 through to October 2009 the finalised figures will be the National Statistics, when released for the period, and they are expected to lie within the pale grey band.

The number of lone parents claiming Income Support has been affected by the Lone Parent Obligations policy changes which came into effect from 24 November 2008. For more information see notes to editors.

Figure 2.2: ISLP client group. National Statistics and Early estimates

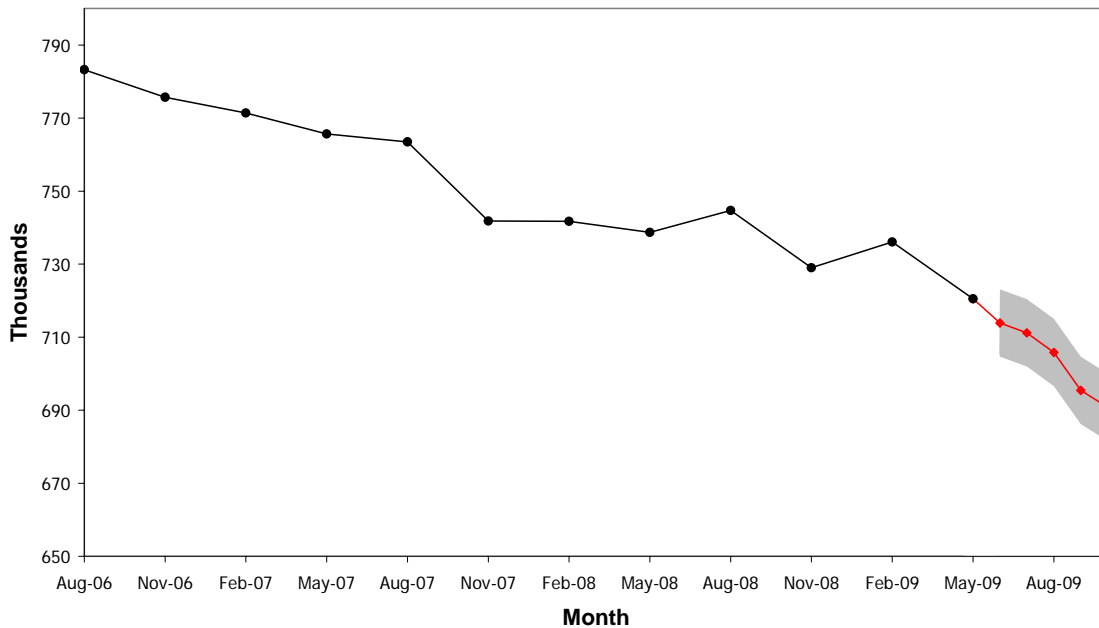


Table 2.2 Point estimate and range for the Early Estimates of numbers in working age ISLP client group June 2009 to October 2009

Time Series	National Statistics Number of Claimants	Early Estimate Number of Claimants	Thousands Estimated Range	
			Number of Claimants	Number of Claimants
Aug-08	744.69			
Nov-08	728.98			
Feb-09	736.04			
May-09	720.48			
Jun-09		710	700	720
Jul-09		710	700	720
Aug-09		700	700	720
Sep-09		690	690	710
Oct-09		690	680	700

Notes relating to figure 2.2 and table 2.2:

1. Income Support Lone Parents: *claimants on Income Support with child under 16 and no partner. From 24 November 2008 lone parents who claim benefit solely on the grounds of being a lone parent and have a child aged 12 or over will no longer be entitled to Income support.*
2. Early Estimates methodology: Technical document and question and answers document are available at <http://statistics.dwp.gov.uk/asd/tabtool.asp>
3. Source data: *DWP Information Directorate: Work and Pensions Longitudinal Study*
4. When the next quarterly National Statistics are published they will be included as the fourth quarterly National Statistic in Table 2.2, and all monthly Early Estimates included in this quarter will be removed from Table 2.2.

Latest statistical data available from: http://statistics.dwp.gov.uk/asd/early_ests.asp



NOTES TO EDITORS

1. Links to further information

For each statistic in this publication, access to more detailed statistics and methodology are available by clicking on the following web links.

Housing Benefit & Council Tax Benefit Summary Statistics:

http://research.dwp.gov.uk/asd/asd1/hb_ctb/hbctb_arc.asp

Landing page for the Early Estimates for Working Age Inactive Benefit Client Groups:

http://statistics.dwp.gov.uk/asd/early_ests.asp

2. Early Estimates

The Early Estimates are designed to give indicative, timely information ahead of the publication of full National Statistics. They are not a substitute for the National Statistics and will be replaced when the final quarterly National Statistics covering the same period are published.

From January 2009 onwards we will introduce some small methodological changes to the way we calculate Early Estimates, these changes are intended to lead to more accurate estimates. More information will be available alongside the January release.

3. Local Authority Changes

On 1st April 2009, the reorganisation of the Local Authorities of England created nine new unitary authorities (UAs). The HB/CTB statistics are presented using the new geographies.

4. Welfare Reform

Employment Support Allowance replaced Incapacity Benefit and Income Support paid on the grounds of incapacity on 27 October 2008 for new claims. The figures relating to Employment Support Allowance have been thoroughly quality assured to National Statistics standard; however it should be noted that this is a new benefit using a new data source which may not have reached steady state in terms of operational processing and retrospection. Hence ESA National Statistics for May 2009 remain provisional. The February 2009 provisional figures have not been subsequently revised since the levels of additional retrospection were small. These figures should now be considered final.

The Lone Parent Obligation policy came into effect from 24 November 2008; Lone Parents (LPs) with a youngest child aged 12 or over were no longer able to make a new or repeat claim for Income Support (IS) solely on the basis of their parental status. Existing IS LPs with a youngest child aged 12 or over are having their eligibility removed over a period of time commencing 2 March 2009. From October 2009 this policy will be extended to LPs with a youngest child aged 10 or 11 and from October 2010 the policy will be extended to LPs with a youngest child aged 7 or over.

5. Other National Statistics issued by the Department for Work and Pensions

Abstract of Statistics for Benefits and Contributions and Indices of Prices and Earnings (annual) – *provides a reference source for those people interested in the main aspects of benefits, contributions and indices of prices and earnings. Latest published figures:* http://statistics.dwp.gov.uk/asd/other_stats.asp

Appeal Tribunal Statistics (quarterly) – *provides statistics on appeals and decisions. Latest published figures:* <http://statistics.dwp.gov.uk/asd/qat.asp>

Child Support Agency Quarterly Summary of Statistics – *provides statistics on the Child Support Agency. Latest published figures:* <http://www.childmaintenance.org/publications/statistics.html>

DWP Quarterly Statistical Summary – provides summary of all DWP statistical outputs including latest quarterly benefit caseloads. Latest published figures:
http://research.dwp.gov.uk/asd/asd1/stats_summary/Stats_Summary_Nov2009.pdf?x=1

Family Resources Survey (annual) - *provides information on the incomes and circumstances of private households in the United Kingdom:* <http://statistics.dwp.gov.uk/asd/frs>

Households Below Average Income (annual) - *provides information on potential living standards as determined by disposable income, changes in income patterns over time and income mobility:* <http://statistics.dwp.gov.uk/asd/hbai.asp>

Housing Benefit and Council Tax Benefit Annual Summary of Statistics – *provides statistics on Housing Benefit /Council Tax Benefit from a 1 per cent sample of data from Local Authorities. Latest published figures:* <http://statistics.dwp.gov.uk/asd/hbctb.asp>

Housing Benefit and Council Tax Benefit Quarterly Summary of Statistics – *provides statistics on Housing Benefit /Council Tax Benefit from quarterly caseload counts and also includes average amounts of benefit. Latest published figures:* <http://statistics.dwp.gov.uk/asd/hbctb.asp>

Housing Benefit and Council Tax Benefit Quarterly Performance Statistics – *provides high level statistics on Local Authority processing of Housing Benefit / Council Tax Benefit from quarterly administrative returns and also includes speed of processing new claims and charges of circumstances. Latest published figures:* http://statistics.dwp.gov.uk/asd/asd1/hb_ctb/performance/performance.asp

Housing Benefit Quarterly Fraud Performance Statistics – *provides high level statistics on Local Authority fraud performance from quarterly administrative returns and also includes numbers of referrals, investigations actioned and sanctions administered. Latest published figures:* http://statistics.dwp.gov.uk/asd/asd1/hb_ctb/performance/performance.asp

Industrial Injuries Disablement Benefit and Reduced Earnings Allowance Statistics (annual) – *provides statistics on current assessments and movements during statistical period. Latest published figures:* <http://statistics.dwp.gov.uk/asd/iidb.asp>

Industrial Injuries Disablement Benefit Quarterly Summary of Statistics – *provides statistics on people in receipt of Industrial Injuries Disablement Benefit, new claims and newly diagnosed prescribed diseases. Latest published figures:* <http://statistics.dwp.gov.uk/asd/iidb.asp>

National Insurance numbers allocated to overseas nationals (Previously migrant workers statistics – quarterly) *provides statistics on migrant workers. Latest published figures:* http://statistics.dwp.gov.uk/asd/tabtool.asp#ni_alloc

Neighbourhood Statistics – *Quarterly ward and Lower Super Outputs Area caseloads for Income Support, Jobseeker's Allowance, Incapacity Benefits, Disability Living Allowance, Attendance Allowance, Pension Credit and State Pension are available from:* <http://83.244.183.180/NESS/page1.htm>

Pensioner Income Series (annual) - *examines the levels, sources and distribution of pensioners' incomes and the position of pensioners within the population income distribution. Latest published figures:* http://statistics.dwp.gov.uk/asd/asd6/pensioners_income.asp

Second Tier Pension Provision (annual) – *contains analysis of contracted out pension schemes. Latest published figures:* http://statistics.dwp.gov.uk/asd/asd1/dsu/second_tier/second_tier.asp

Tax/Benefit Model Tables (annual) – *designed to illustrate the weekly financial circumstances of a selection of hypothetical local authority and private tenants. Latest published figures:* <http://statistics.dwp.gov.uk/asd/tbmt.asp>

6. Other statistical outputs issued by the Department for Work and Pensions

Benefit Expenditure Tables - financial year historic information on benefit expenditure and caseloads, along with forecasts are available from <http://statistics.dwp.gov.uk/asd/asd4/expenditure.asp>